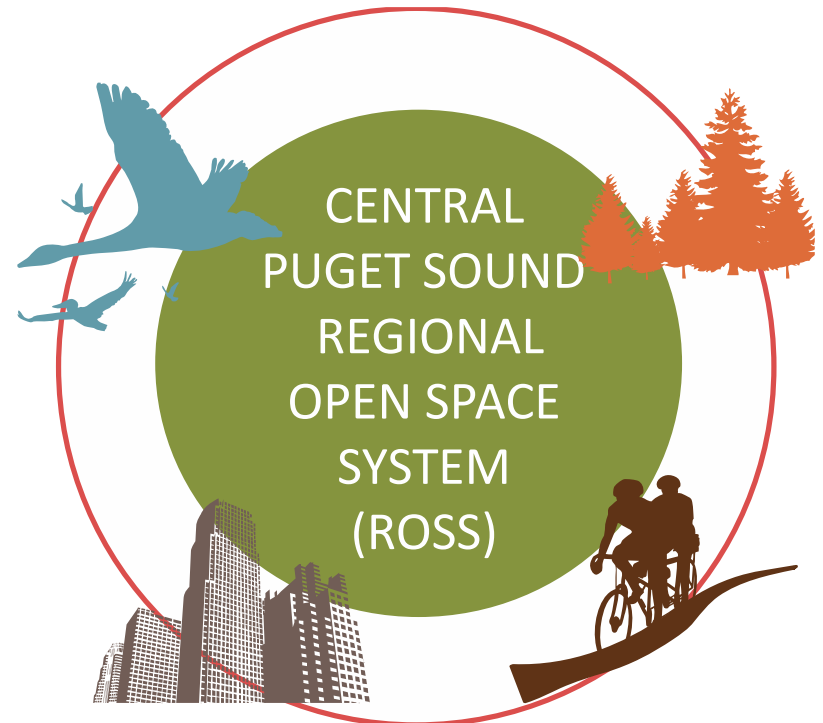


CENTRAL PUGET SOUND REGIONAL OPEN SPACE STRATEGY ROSS

Ecosystem Services Meeting
June 12th, 2013

Introduction to ROSS &
Ecosystem Services Valuation Needs



PARTICIPATING ORGANIZATIONS



FORT&ERRA



Pierce County



Snohomish County

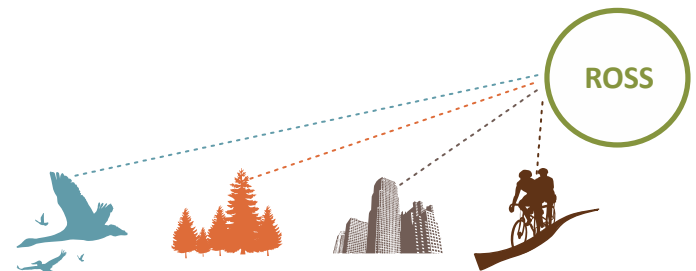


The Bullitt Foundation

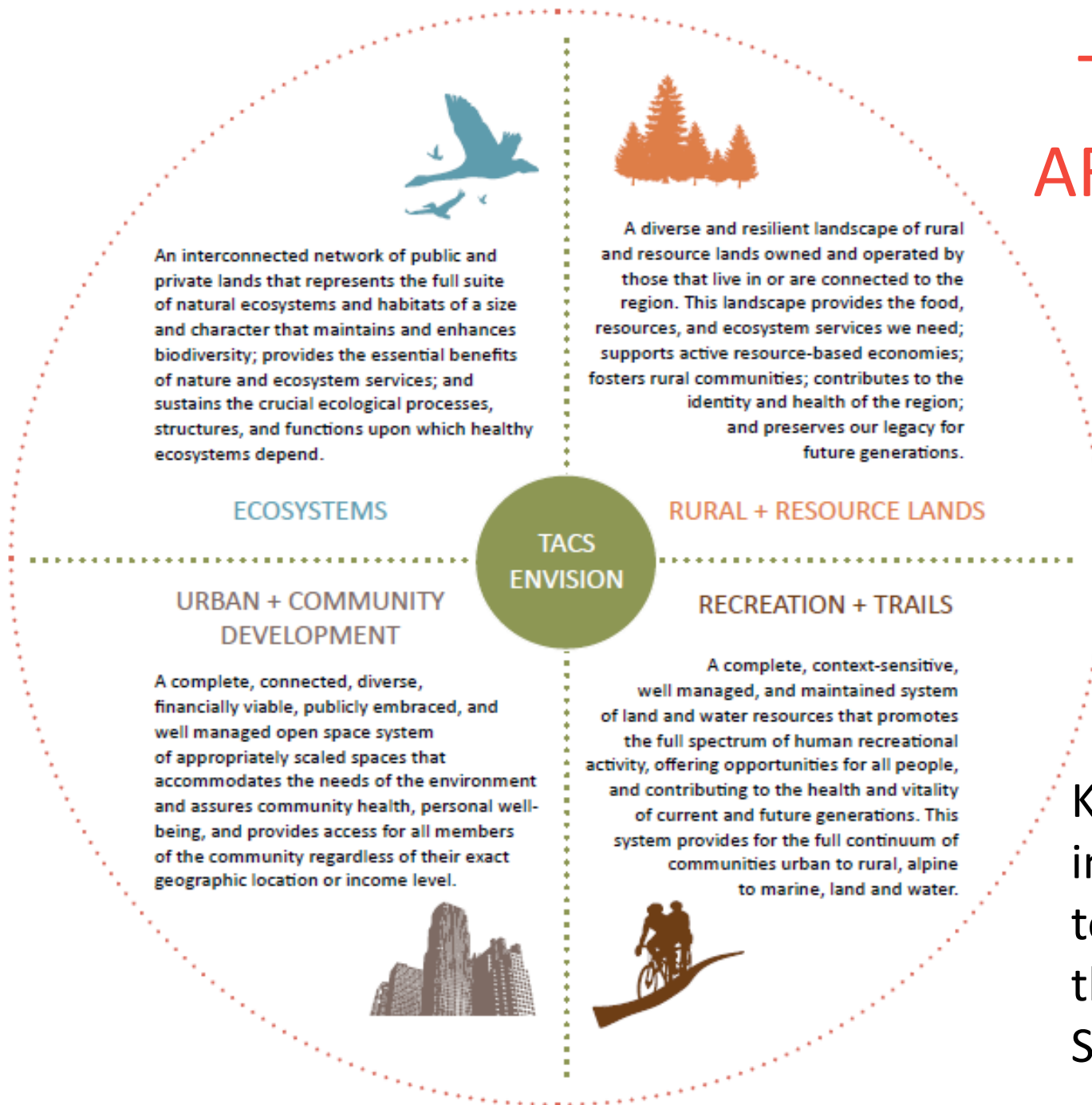


WHY ARE WE HERE?

- Achieving more collective impact by building a diverse coalition
- Opening doors for partner organizations by highlighting local conservation projects that fulfill regional priorities
- Informing local decision-making by expanding on available analytical tools and approaches to public engagement.

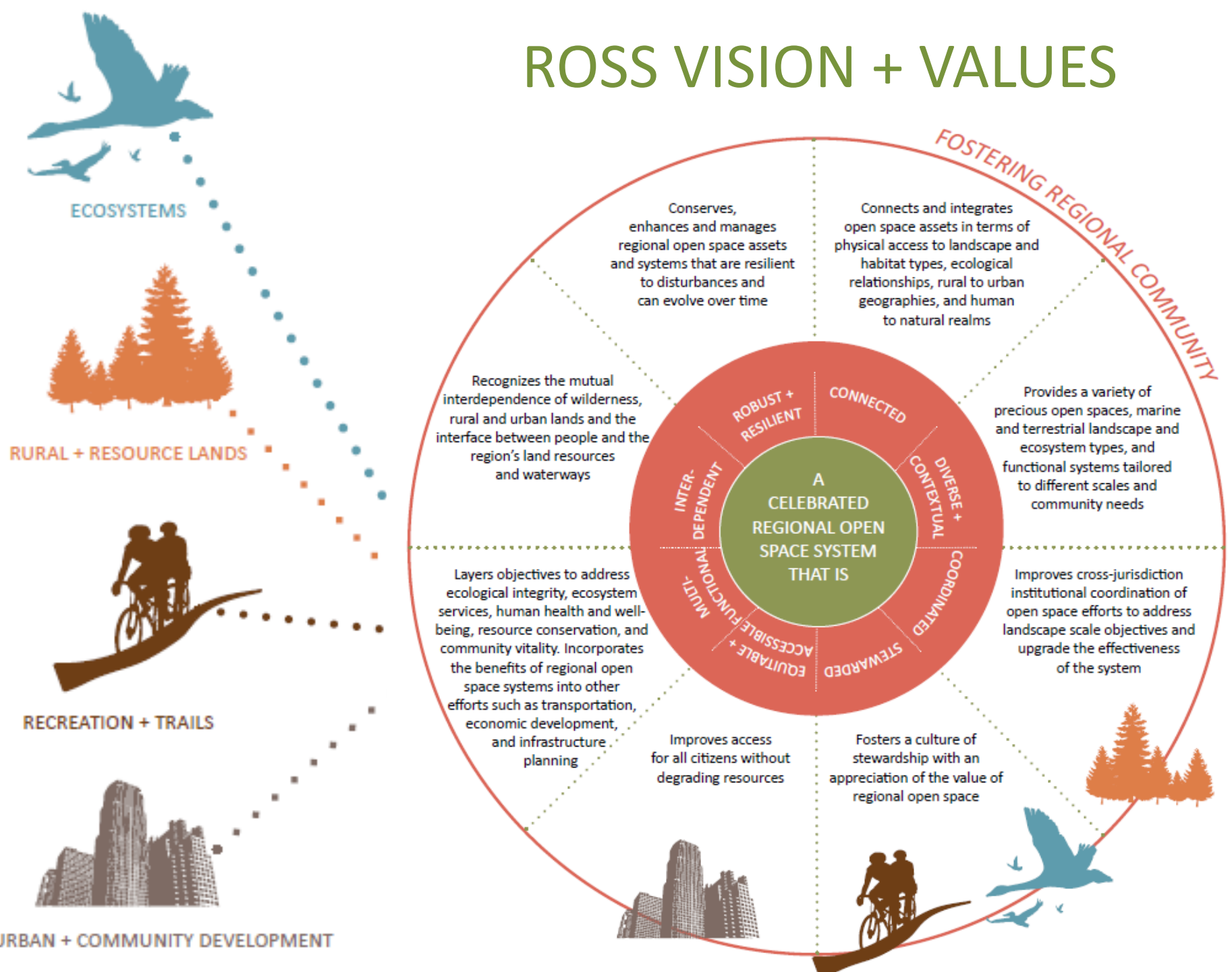


TECHNICAL AREA VISIONS



Key expertise and interests engaged to form a vision for the Regional Open Space System

ROSS VISION + VALUES



KEY WORK PRODUCTS + WORK PLAN



STAFF +
CONSULTATIVE
GUIDANCE

EXECUTIVE COMMITTEE (EC)

GOVERNANCE + FINANCE SUB-COMMITTEE

COMMUNICATIONS + OUTREACH SUB-COMMITTEE

ECOSYSTEMS TASK FORCE

HEALTH + EQUITY TASK FORCE



TECHNICAL ADVISORY COMMITTEES

WATERSHED TASK FORCES

2013-2014 TIMELINE

	2013						2014					
TASK 1: Regional Coordination												
EXECUTIVE COMMITTEE			X - Mtg. 1			X - Mtg. 2			X - Mtg. 3			X - Mtg. 4
COMMUNICATIONS		Interviews	Securing Partners	Draft Comm. Strategy	Final Comm. Strategy	Implementation of Communications						
HEALTH + EQUITY			Initial Meetings	Early Recommendations & Data Integration					Ongoing Input Into ROSS/WOSS			
ANALYTICAL FRAMEWORK	Expert Interviews	Early Work Sessions	Draft Analytical Framework			Final Framework	Application to WOSS(s)		Analytical Eval. Report			
TASK 2: Watershed Open Space Strategies 1 + 2												
WOSS #1 PUYALLUP-WHITE	Background Report			Engagement Meetings			Draft WOSS	Final WOSS				
WOSS #2 SNOHOMISH			Background Report		Engagement Meetings				Draft WOSS		Final WOSS	

ROSS SUMMARY WORKPLAN, TIMELINE

WORK ELEMENT 1

PROJECT FUNDING, CAPACITY,
ORGANIZATIONAL ALLIANCES

WORK ELEMENT 2

WATERSHED OPEN SPACE STRATEGIES
(WOSS)

WORK ELEMENT 3

STRATEGIC INITIATIVES
COMMUNICATIONS + OUTREACH

ECOSYSTEM SERVICES

HEALTH + EQUITY

GOVERNANCE + FINANCE

POTENTIAL NEAR-TERM ACTIONS

WORK ELEMENT 4

ROSS DEVELOPMENT + ROLL-OUT

PROJECT NEED:

Estimated In-Kind Support:

FALL 2012- SPRING 2013	SPRING 2013- SPRING 2014	2014 + 2015	2016
CURRENT: PCS LAUNCH, FUNDRAISING	STAGE 1: DEVELOP TECHNICAL MODELS, BEGIN WOSS	STAGE 2: FINALIZE WOSS	STAGE 3: INTEGRATED ROSS DEVELOPMENT + ROLL-OUT
On-going activities	On-going activities	On-going activities	On-going activities
On-going preparation and information gathering.	Begin at least 2 WOSS	Complete all seven WOSS	
Form EC sub-committee	Broad communication strategy development	WOSS communication strategy development and execution	ROSS roll-out strategy development and execution
Begin Taskforce development	Engage experts and develop early framework	Apply framework to WOSS	Apply framework to final integrated ROSS
	Engage experts, explore data and links	Integrate data/information into WOSS	Integrate data/information into final integrated ROSS
Form EC sub-committee, NPS introductions to federal partners	Tasks TBD by sub-committee		Governance structure roll-out with final integrated ROSS
	TBD	TBD	TBD
	Begin ROSS analysis and roll-up as WOSS are completed.		Development of integrated ROSS strategy and roll-out
\$ 24,000 \$ 54,000	\$ 244,000 \$ 256,000		

HUMAN RESOURCES

- **Leadership**

- **Executive Committee** (Broad guidance and regional coordination)
- **Leadership Group** (Former Steering Committee – More direct oversight on ROSS activities/direction)
- **Technical Advisory Committees** (Contacted Ad Hoc/Informally)
- **Watershed Advisory Groups** (Engaged as part of WOSSs)

- **Staffing & Partnerships**

- **Lead Planner** (Administrative + Regional Initiatives + Puyallup-White WOSS)
- **Assistant Planner(s)** (Administrative + Ecosystem Services Valuation + Snohomish WOSS)
- **POE Envir. Management Program** (Ecosystem Services Valuation)
- **GIS Intern** (Mapping in collaboration with GEOG569)
- **NPS + Resource Media** (Communications & Engagement)
- **Forterra** (Regional Urban Forestry Strategies)

CURRENT ACTIVITIES + NEXT STEPS

Regional Scale

- Messaging & Outreach in partnership with Resource Media
- Ecosystem Services Valuation / Analytical Framework
- Health/Equity Engagement
- Presentations & Partnerships
 - Puget Sound Federal Caucus
 - NW Biocarbon Initiative

Watershed Scale

- Puyallup-White WOSS
- Snohomish WOSS

Puyallup-White WOSS Timeline

Fall 2012 – Scoping & Early Organization Outreach

March 2013 – TRFF Grant Funds Secured

April-June 2013 – Background Report

- GIS Mapping in Puyallup-White – GEOG 469 Students
 - Resource Media Interviews & Recommendations
-
- Draft Background Report

Puyallup-White WOSS Timeline

June-Sept 2013 –Engagement & Analysis

- Formation of Watershed Advisory Group
- Coordination with Bonneville Environmental Foundation
- Data prepared for ecosystem services valuation
- Public Engagement & Sub-Grants

December 2013 – Draft WOSS

January 2014 – Final WOSS

Snohomish WOSS Timeline

April-May 2013 – Securing Grant Funds

- Acquired Bullitt Grant (\$25-50K)
- Joint Application to LSMF with Snohomish County

May-July 2013 – Scoping & Early Outreach

Sept 2013 – Background Report

Sept 2013-Jan 2014 – Engagement & Analysis

March 2014 – Draft WOSS

April 2014 – Final WOSS

ANTICIPATED ECOSYSTEM SERVICES VALUATION NEEDS

Short-Mid Term:

- Focus on existing prioritization of open space/green infrastructure established by partner organizations.
- Highlight the full value of these prioritized lands/resources
- Utilize this analytical frame to inform how Pierce/Snohomish/Thurston Counties, PSP/State, & federal agencies direct conservation resources.

Long Term:

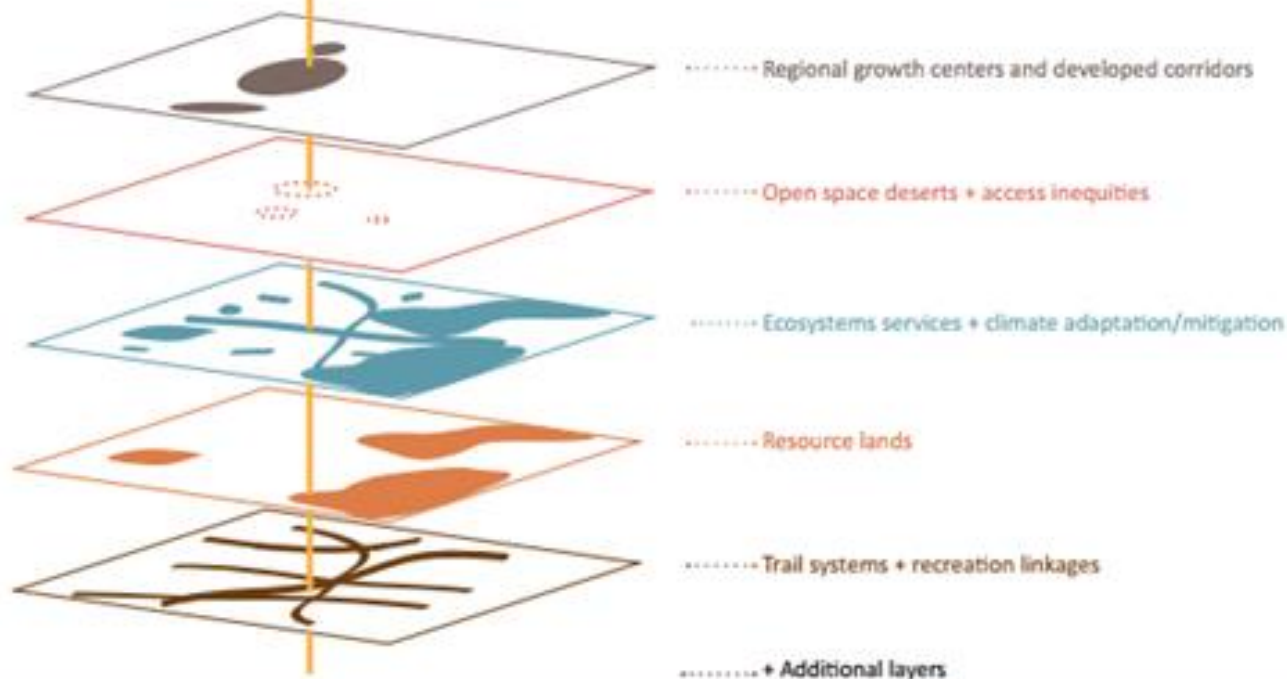
- Demonstrate the value of building a system of open spaces/green infrastructure at watershed and regional scale
- List of projects, acquisitions, and/or actions that maximize regional scale ecosystem services benefits?

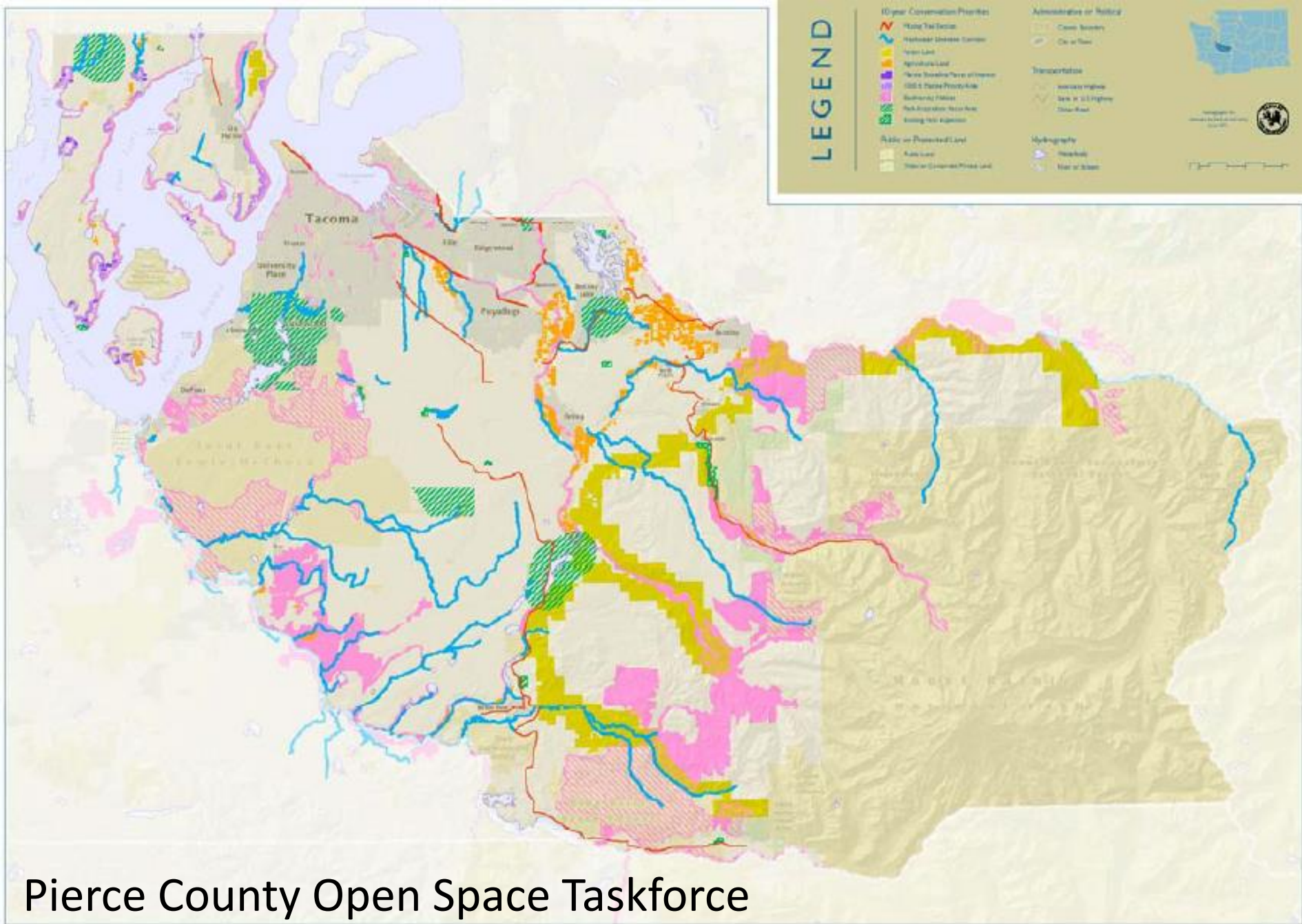
Key Focus: Where do interests intersect?

LAYERING + OPTIMIZING FUNCTIONS + VALUES

Conduct a GIS analysis that links priorities for ecological habitat with open space priorities that support other key interests to synthesize needs and identify where actions to support open space might intersect. Establish a spatial vision for the regional open space system based on this assessment.

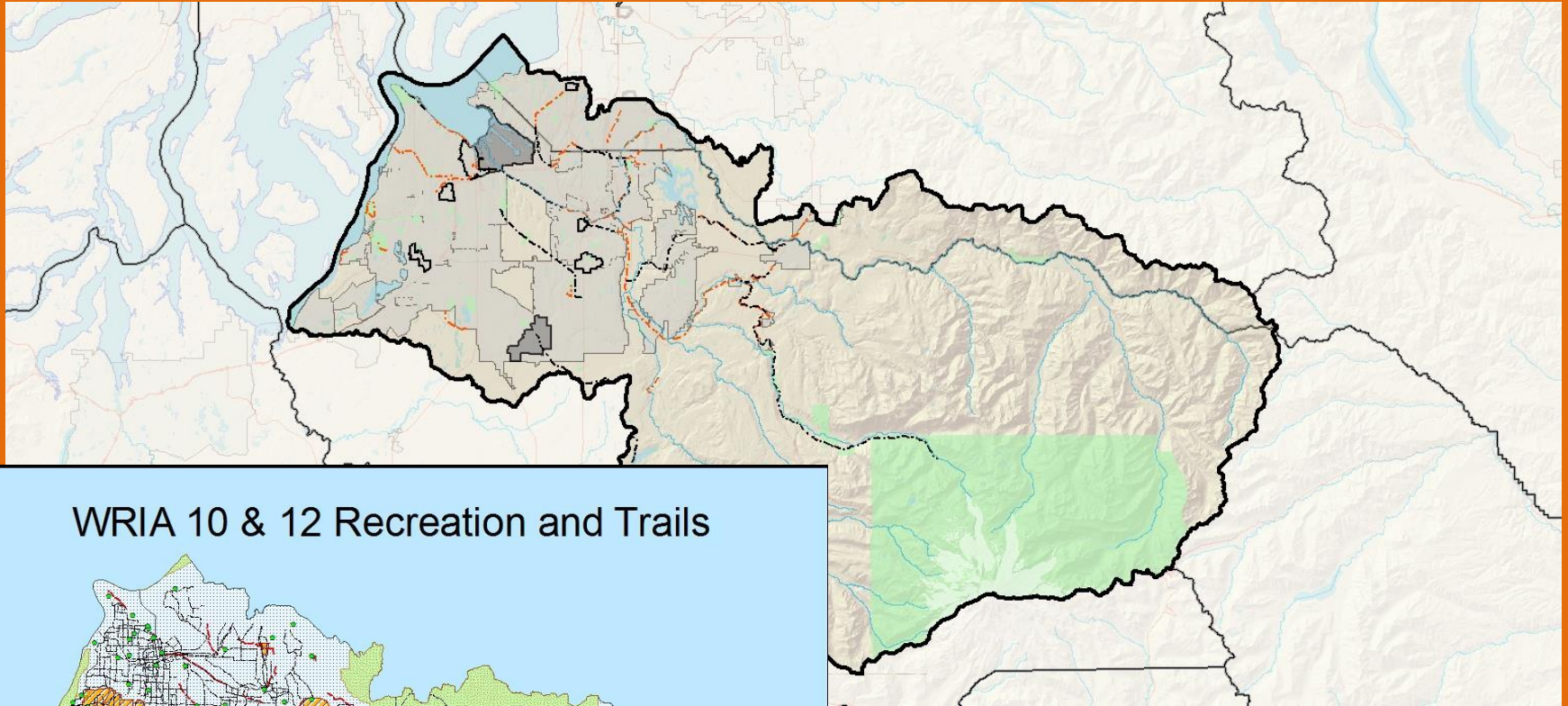
MULTIPLE BENEFITS = ROSS OPPORTUNITY



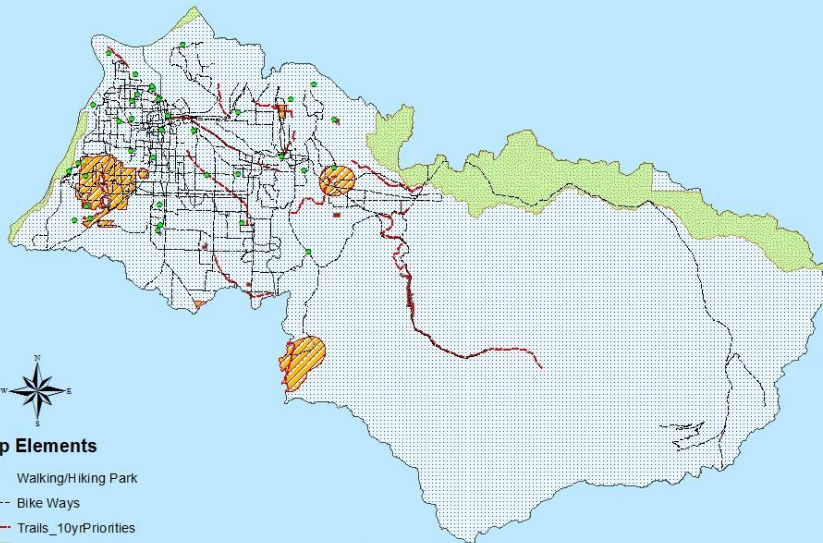


Pierce County Open Space Taskforce
10 Year Open Space Priorities

Student GIS Mapping Data - ROSS TAC Layers: RECREATION & TRAILS



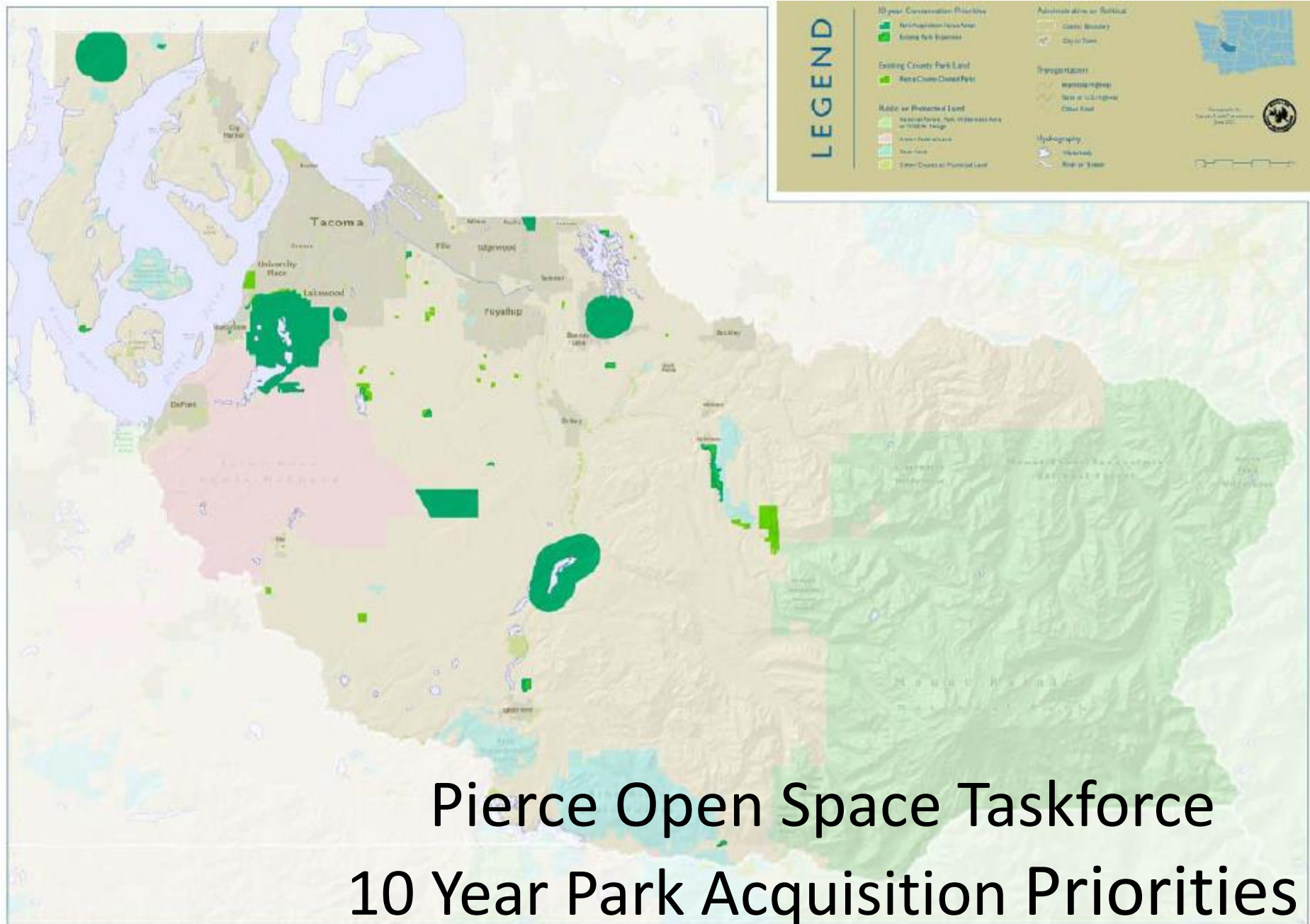
WRIA 10 & 12 Recreation and Trails



Map Elements

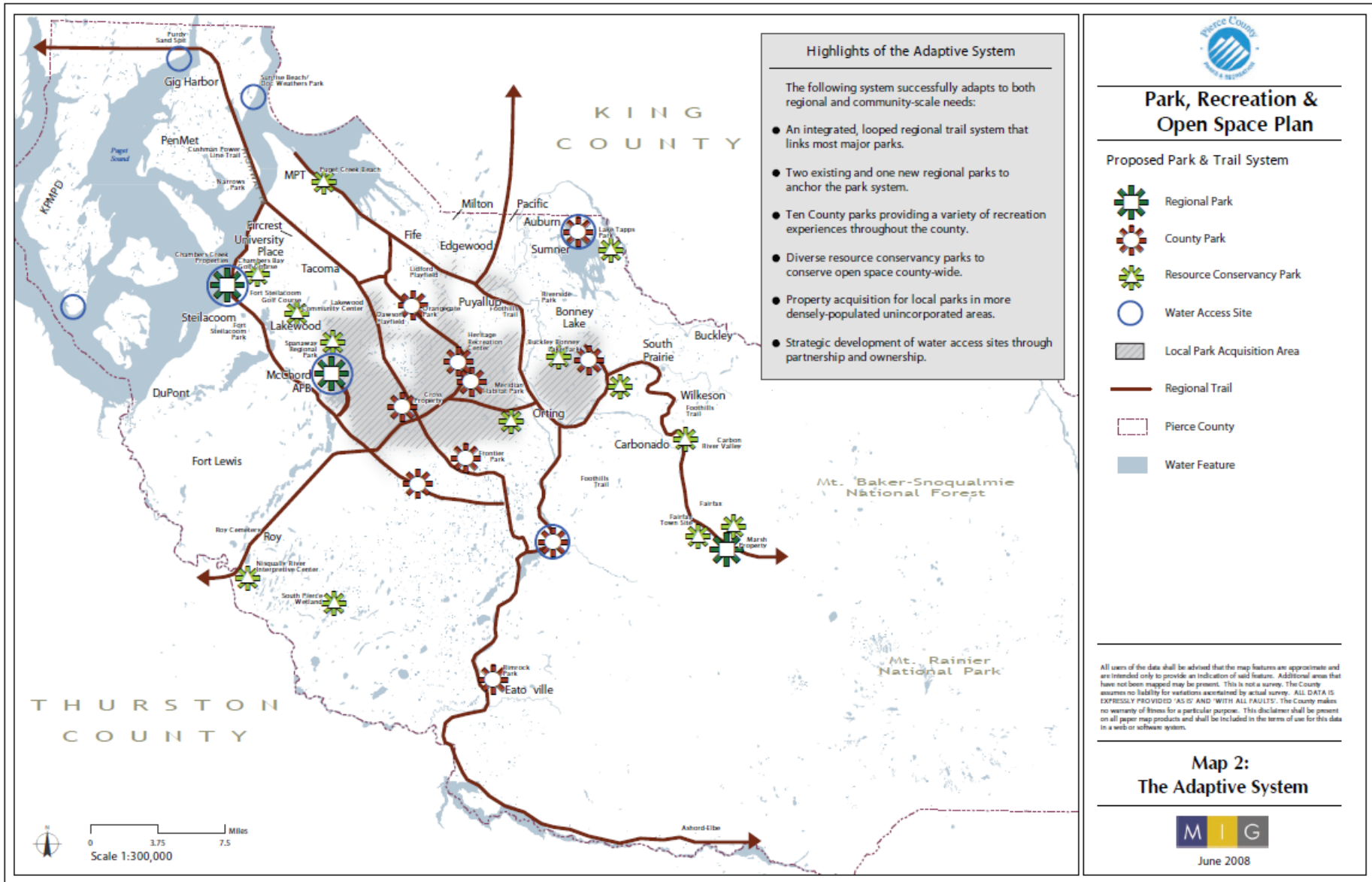
- Walking/Hiking Park
- Bike Ways
- Trails_10yrPriorities
- Current Parks
- Parks_Acquisition_10yrPriori
- Parks_Expansion_10yrPrioriti

0 3 6 12 18 24 Miles

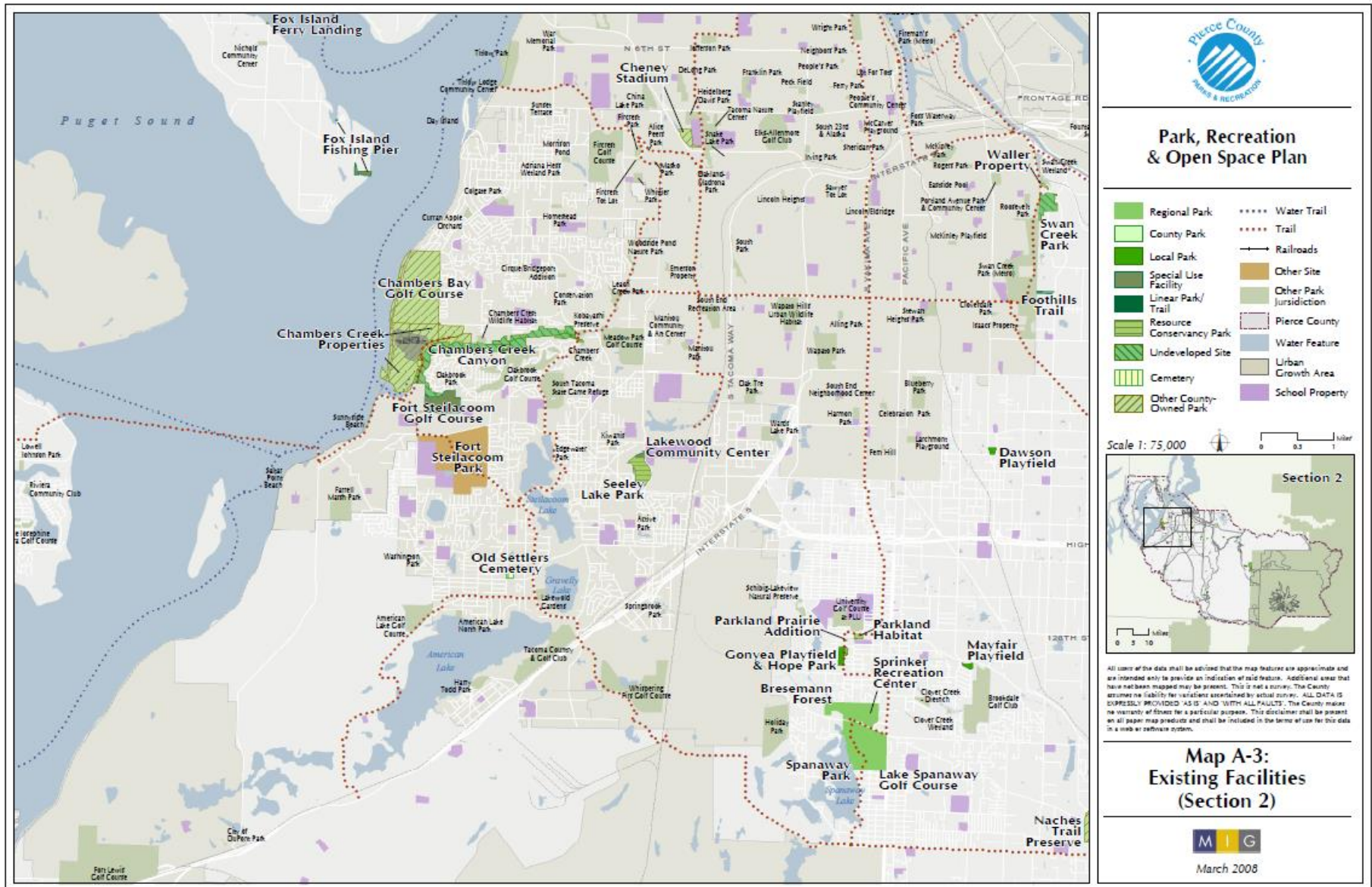




Pierce County Comp Plan: Proposed Regional & County Park System



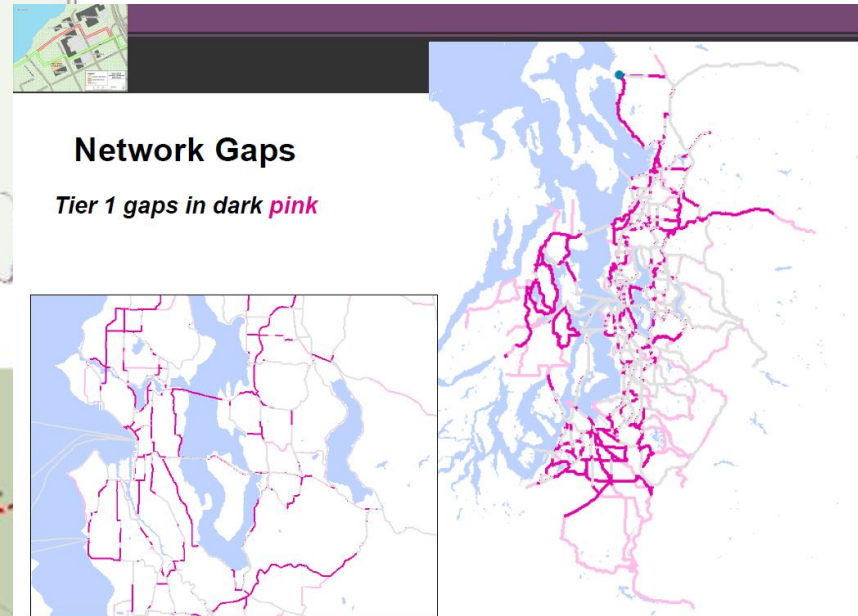
Pierce County Comp Plan: Undeveloped Park Sites



Pierce County Comp Plan: Proposed Regional Trails

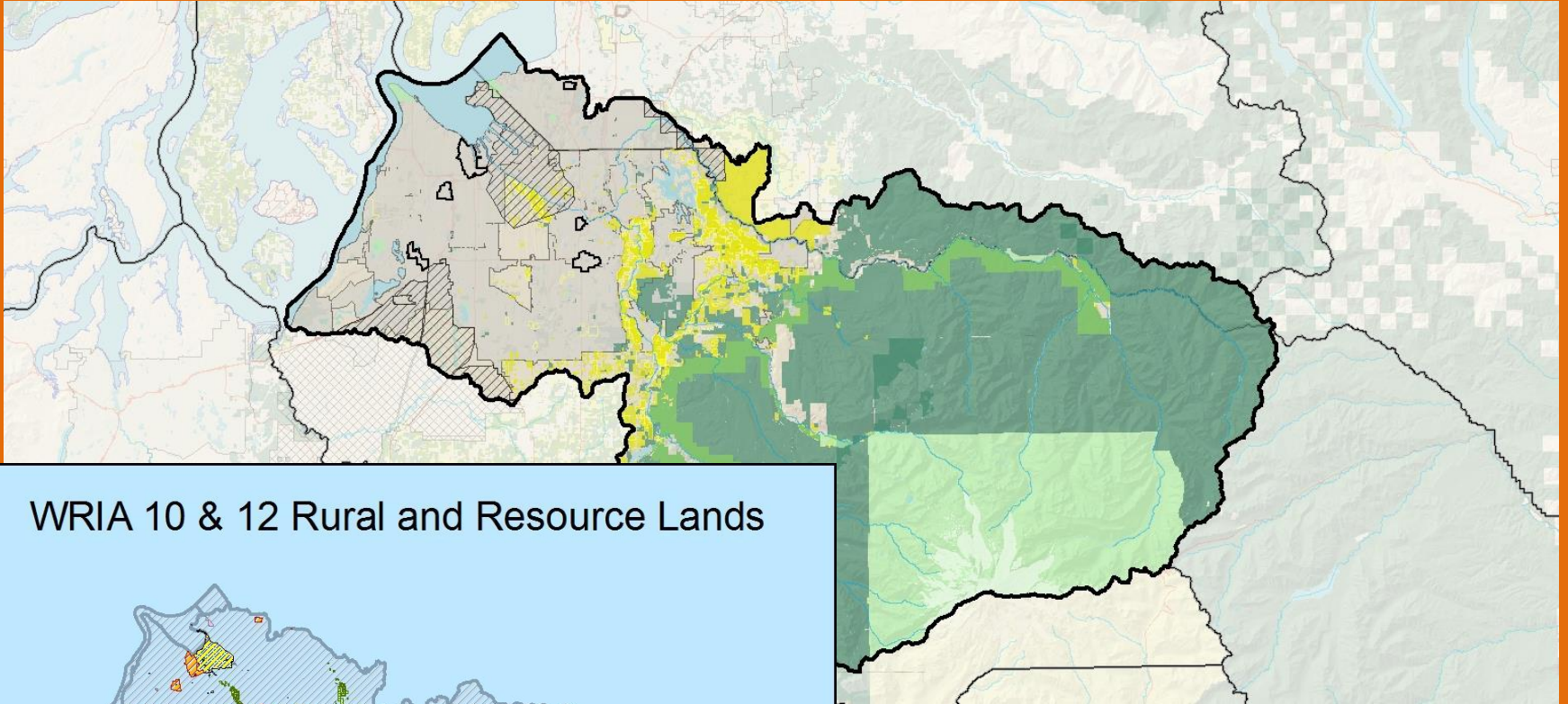


**+ PSRC Bicycle Network
Priorities – Due June 30th**

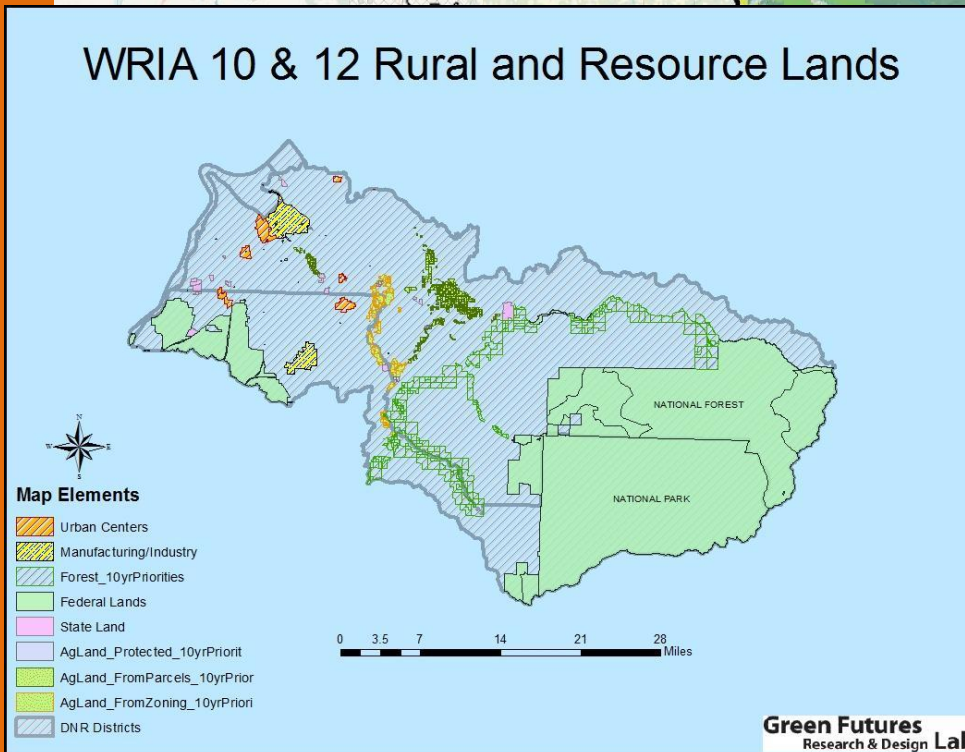


**+ DNR and other
Recreation Trail Priorities?**

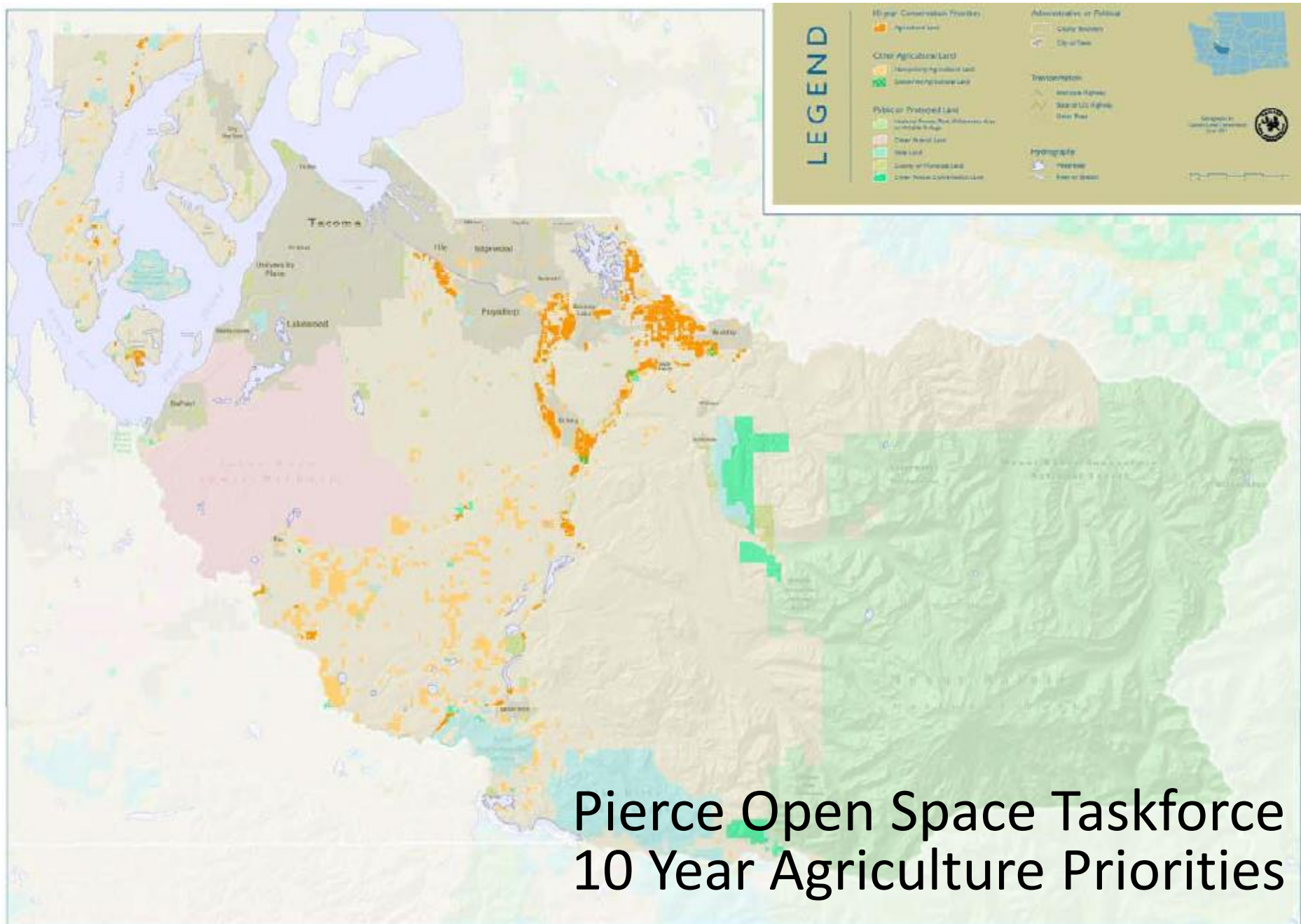
Student GIS Mapping - ROSS TAC Layers: RURAL + RESOURCE LANDS



WRIA 10 & 12 Rural and Resource Lands





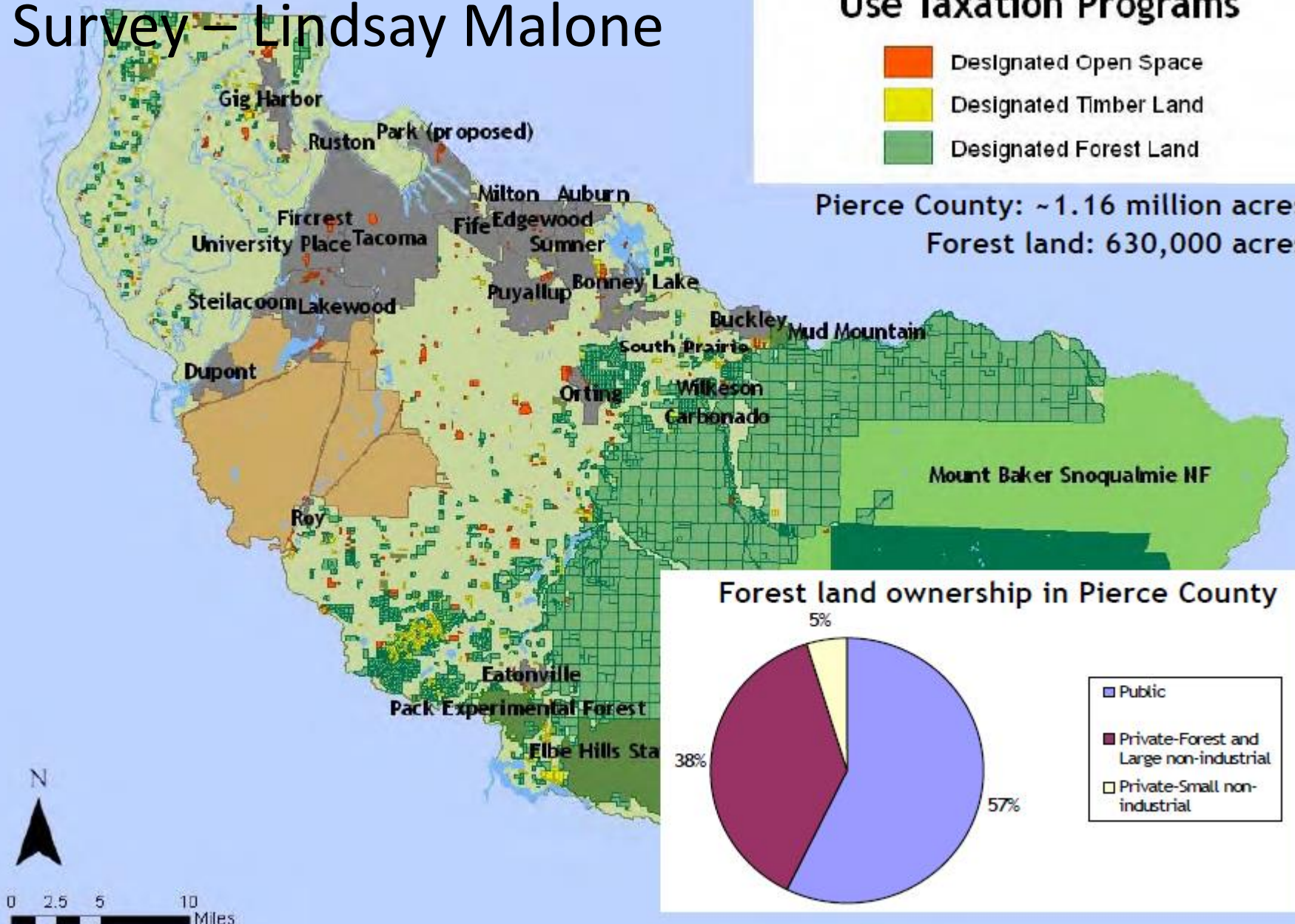


2007 PC Forest Landowner Survey – Lindsay Malone

Parcels Enrolled in Designated Use Taxation Programs

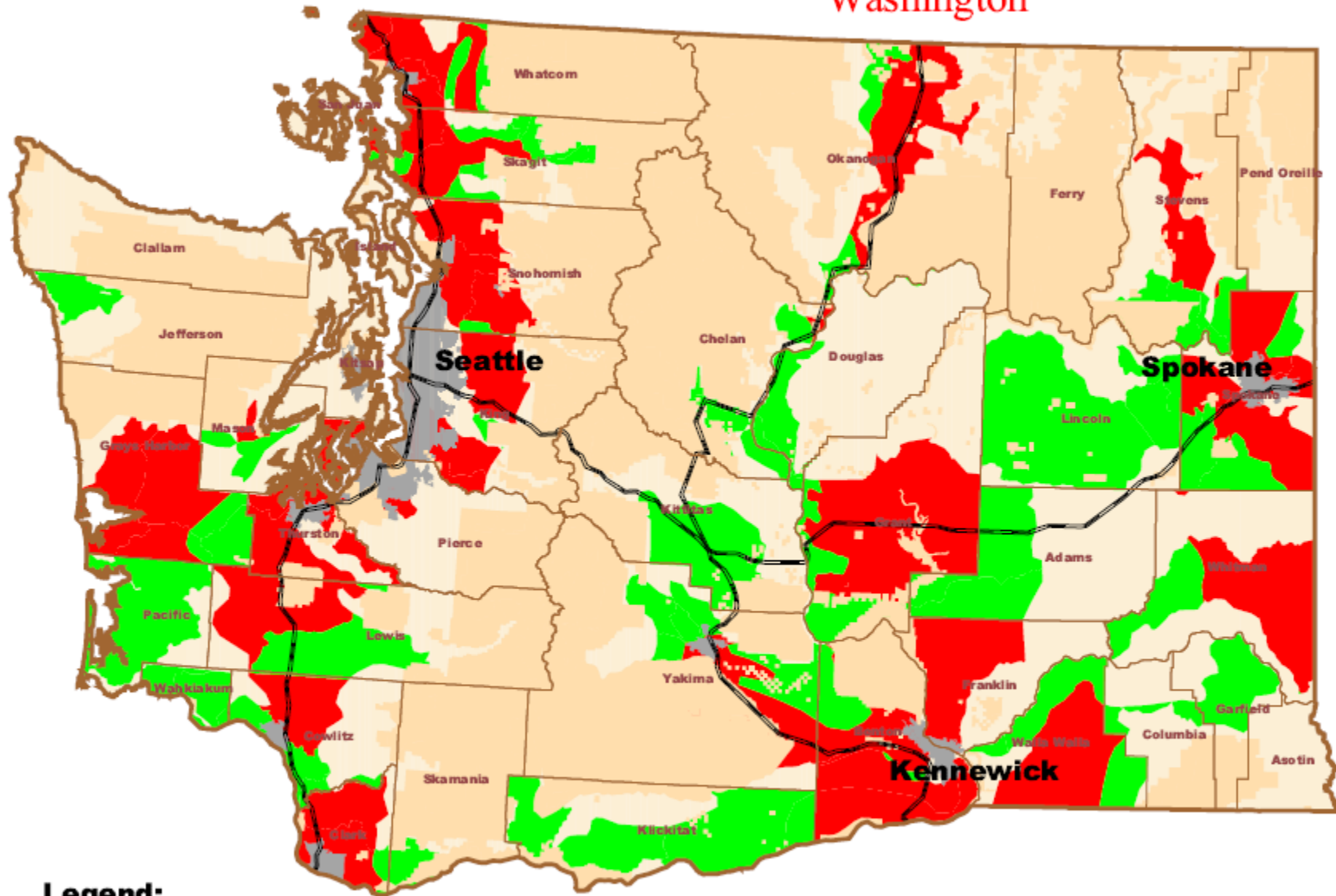
- Designated Open Space
- Designated Timber Land
- Designated Forest Land

Pierce County: ~1.16 million acres
Forest land: 630,000 acres







FARMING ON THE EDGE

Sprawling Development Threatens America's Best Farmland Washington



High-quality farmland areas have relatively large amounts of high-quality or unique farmland. High-development areas have relatively high rates of high-quality farmland to development. Areas that do not meet both threshold tests are relative measures of sub-county areas and their respective state averages.

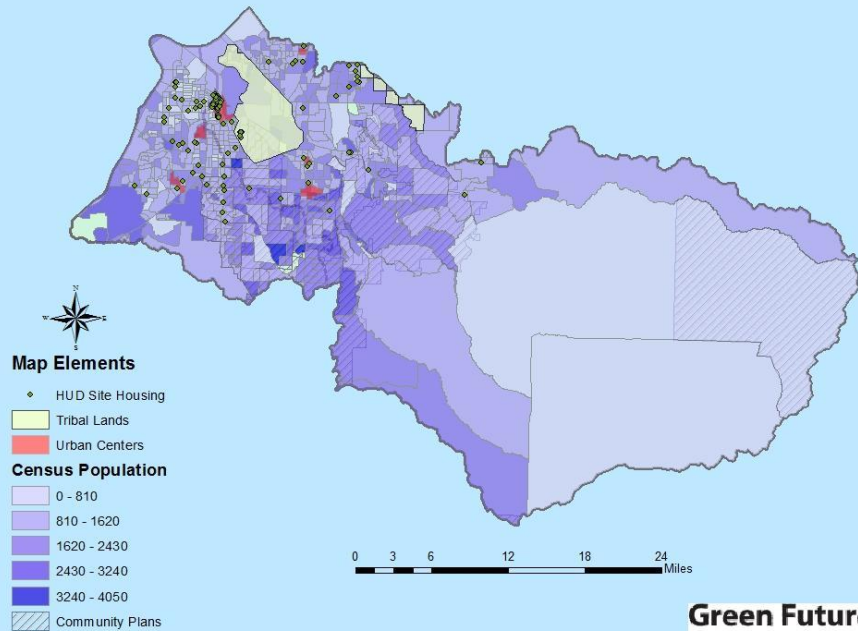
Legend:

- | | |
|---|---|
|  High-Quality Farmland & High Development |  Urban Areas |
|  High-Quality Farmland & Low Development |  Other Lands |

Student GIS Mapping Data - ROSS TAC Layers: URBAN + COMMUNITY



WRIA 10 & 12 Community and Urban Development

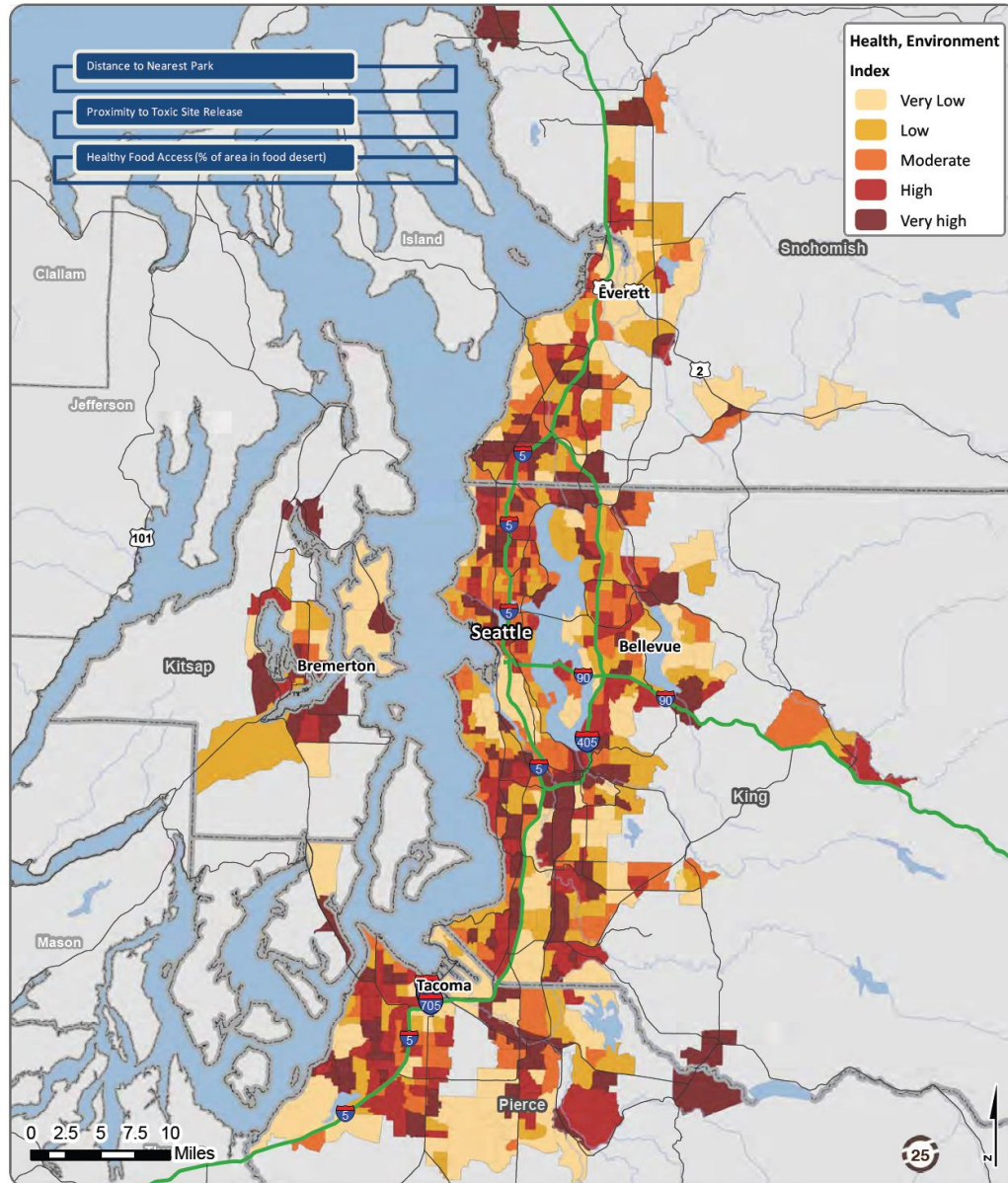


Map 1.6 Health & Environment Opportunity Puget Sound Urbanized Area



Kirwan Institute
Many Differences **One** Destiny

Sources: ESRI, 2010; Environmental Protection Agency, 2010; Puget Sound Regional Council, 2010; Tetrad, Inc. 2010



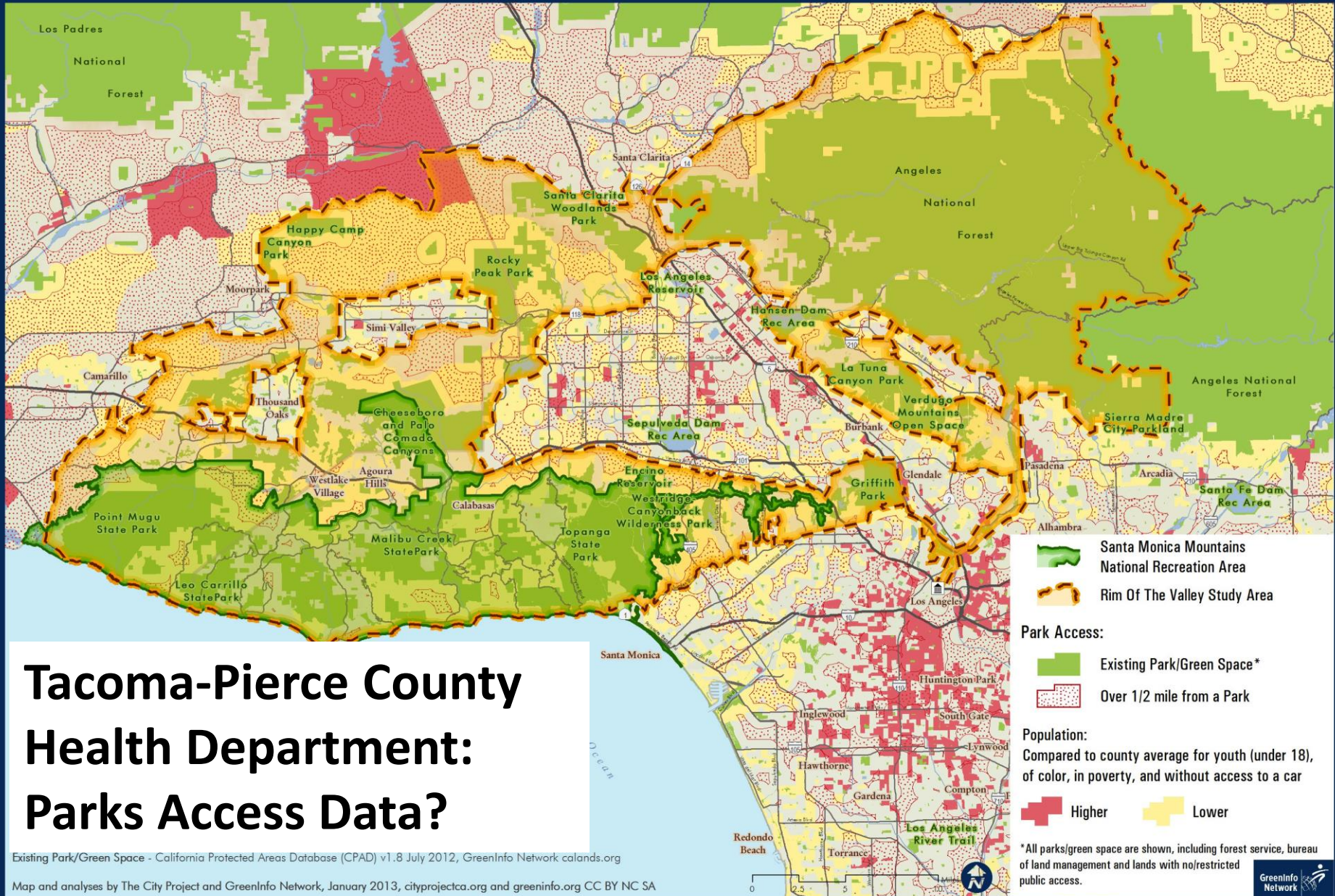
PSRC: Demographic Data

RGCs & MICs

Sub-Centers

Opportunity Mapping:

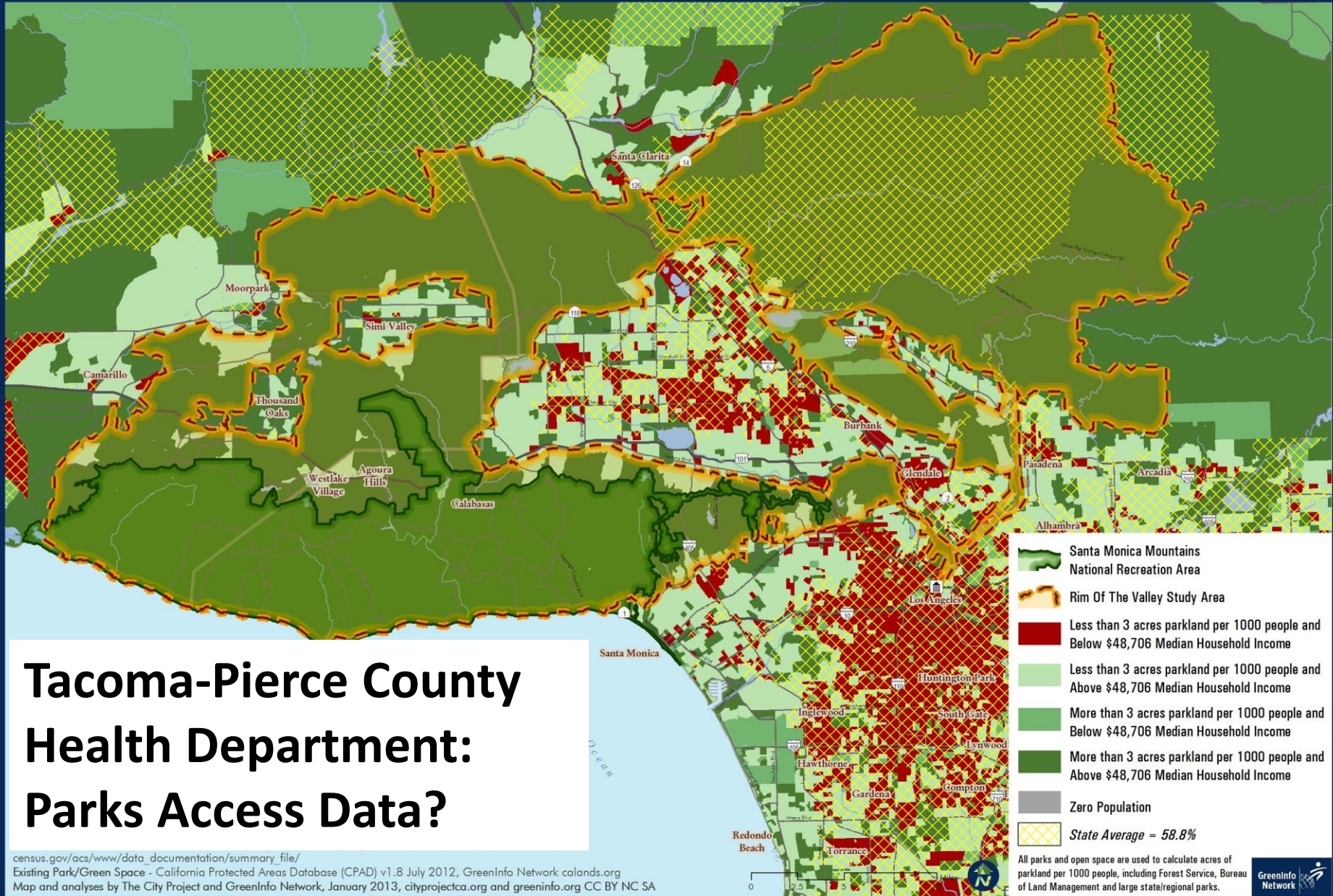
Distance to the nearest park or open space was measured from census tract's centroid in urban areas.

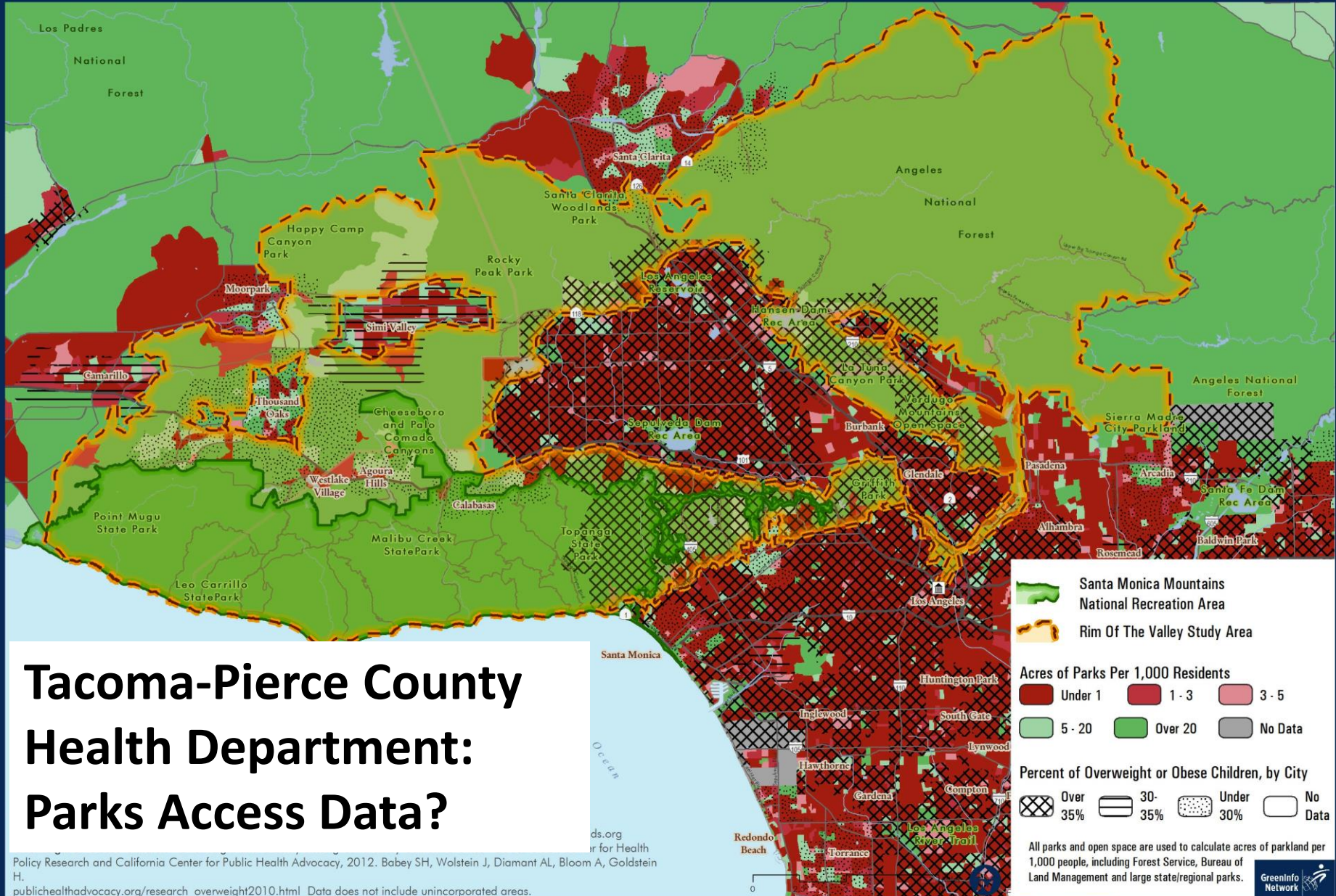


Tacoma-Pierce County Health Department: Parks Access Data?

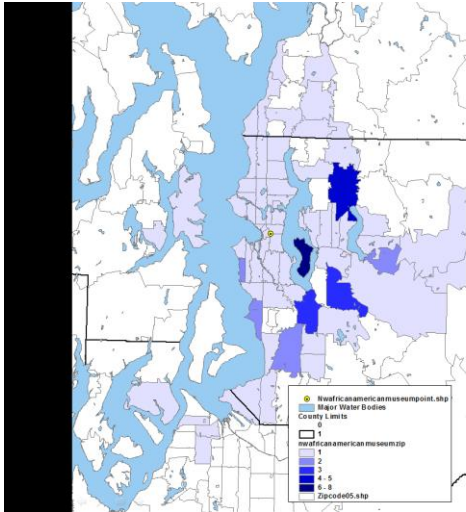
Existing Park/Green Space - California Protected Areas Database (CPAD) v1.8 July 2012, GreenInfo Network calands.org

Map and analyses by The City Project and GreenInfo Network, January 2013, cityprojectca.org and greeninfo.org CC BY NC SA





Cultural Resource Mapping -



NW African American Museum Regional Distribution of Donors By Zip Code



WISAARD
Washington Information System for Architectural and Archaeological Records Data

State View | Pan | Zoom In | Zoom Out | Previous | Next | Select | Clear | Identify | Print

Info | Layers | Find Location

Welcome to WISAARD!

Funding for the development of this site was provided by:

- Federal Highway Administration
- National Park Service
- USDA Natural Resource Conservation Service
- Washington State Public Works Board
- Washington State Department of Transportation
- Washington State Department of Natural Resources

*Please be aware there may be historic properties and surveys within your area of interest that do not display on the map.

Use the Search tab to find relevant properties and surveys in our database.

Map | Search | Results

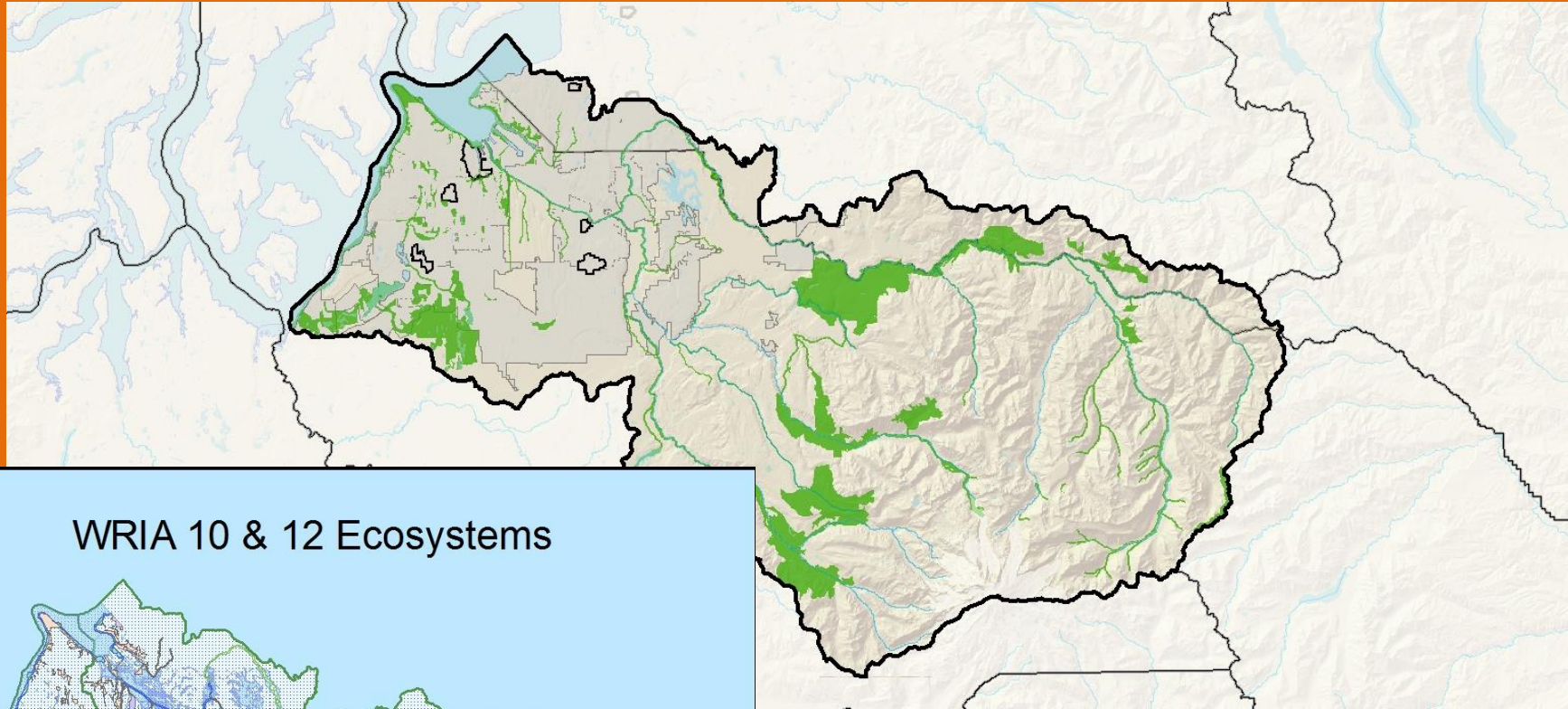
Map showing various locations and landmarks, including:

- Skagit County, Andrew and Bertha, Net Shed and House
- Midway School
- Camp Six
- Fire Station No. 14
- Haddaway Hall
- Marvik, John, Barn
- Washington School
- Fireboat No. 1
- Slavonian Hall
- Fire Station No. 15
- M.V. Kalakala (ferry)
- Jovita Land Company Model Home - Corbett House
- Neely, Aaron, Sr., Mansion
- Patton Bridge
- King
- Smalley, Joseph and Caroline, Barn
- Anderson, Charles, Farm
- Dieringer School
- Nelson, Fred and Aslaug, Farm
- Curran, Charles and Mary Louise, House
- Engine House No. 8
- Tacoma Mausoleum
- Pierce
- Hendrickson Homestead
- Ryan House
- Lotz, J.H., House
- Stewart - Brew House
- Connell's Prairie Marker
- Stellacoom Catholic Church
- Byrd Cemetery
- Keach, Philip, House
- Rhodesleigh
- Boatman, Ainsworth House
- Spooner Farms
- Parkland Lutheran Children's Home
- Holmberg, Ole, Barn
- Devoe, Emma Smith, House
- Clover Creek Oregon Trail Marker
- McMillin School
- Bisson, William, House

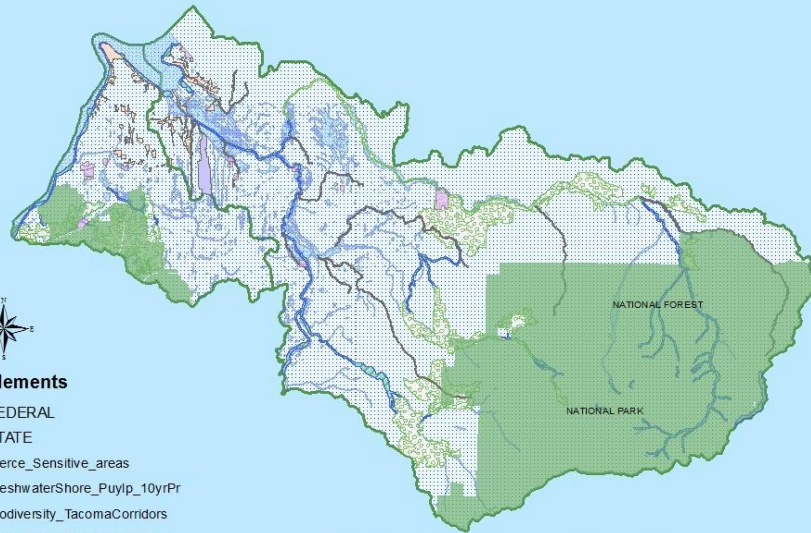
DAHP Home | Manage HPI Data | Contact | Help

DEPARTMENT OF ARCHAEOLOGY & HISTORIC PRESERVATION

GEOG 469 Student GIS Mapping Data: ROSS TAC Layers: ECOSYSTEMS



WRIA 10 & 12 Ecosystems



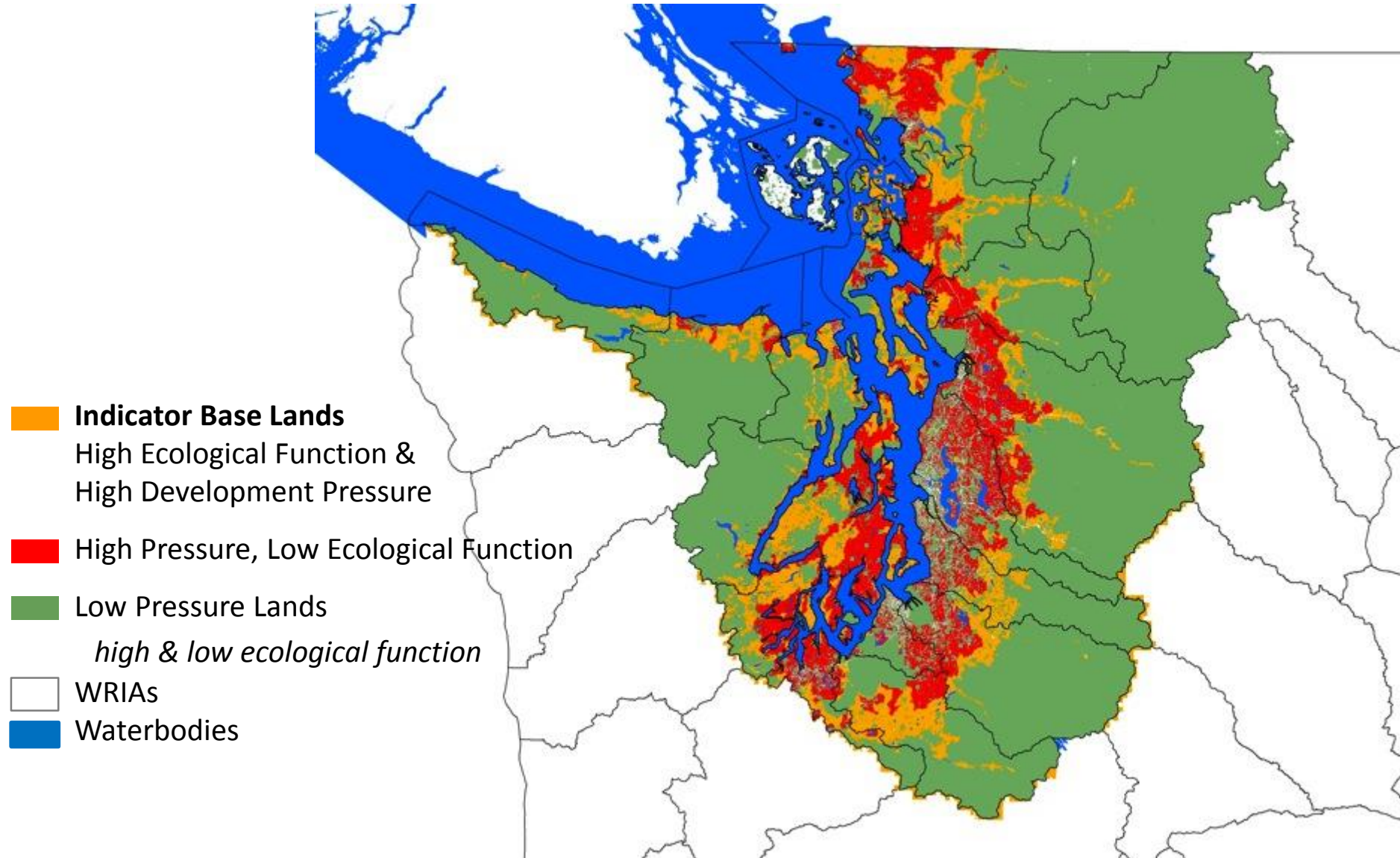
Map Elements

- FEDERAL
- STATE
- Pierce_Sensitive_areas
- FreshwaterShore_Puylp_10yrPr
- Biodiversity_TacomaCorridors
- Biodiversity_Connectors_10yr
- Biodiversity_Corridors_10yrP
- Pierce_county_floodplain_WRIA10_12

0 3 6 12 18 24 Miles

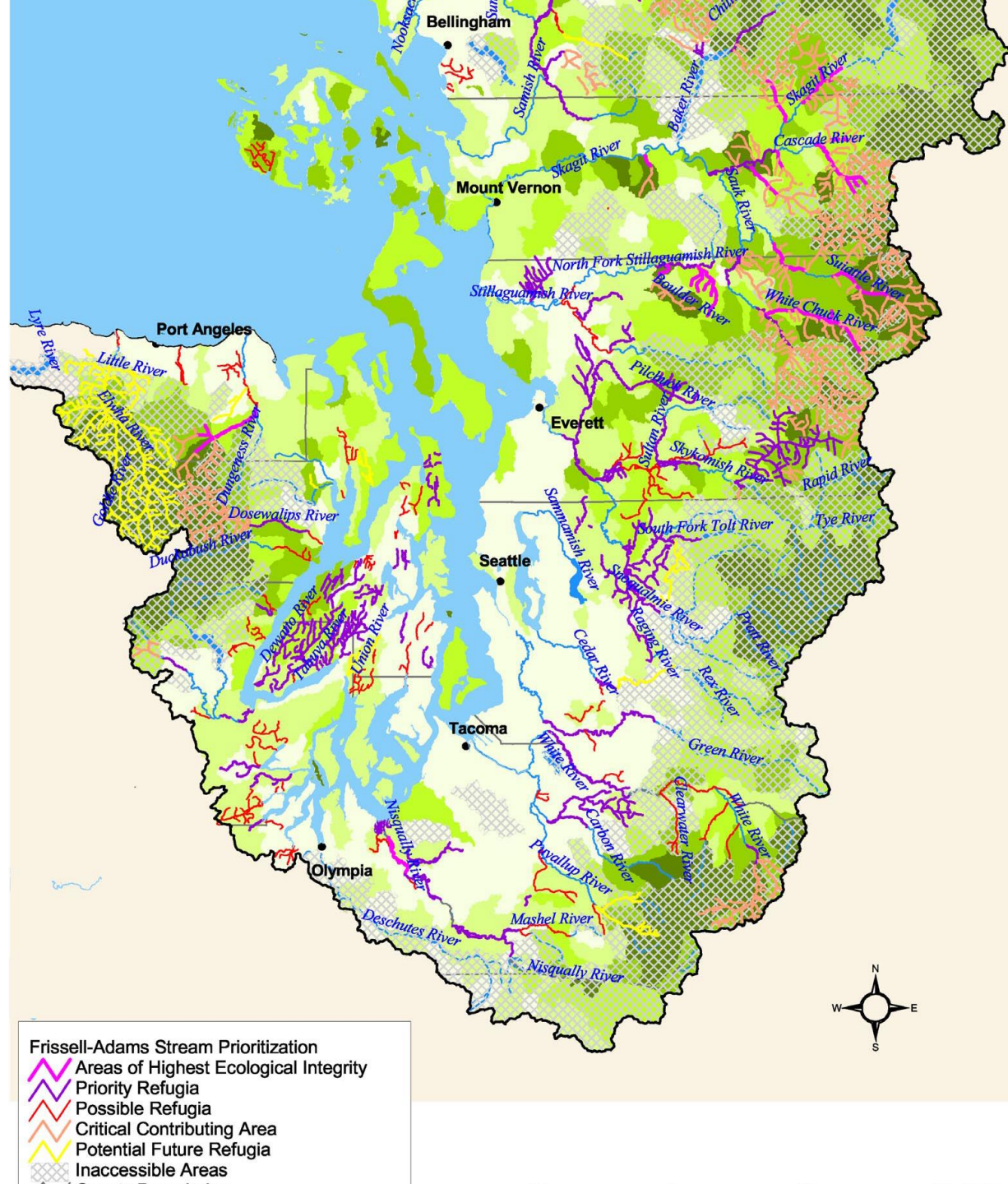
Green Futures
Research & Design Lab

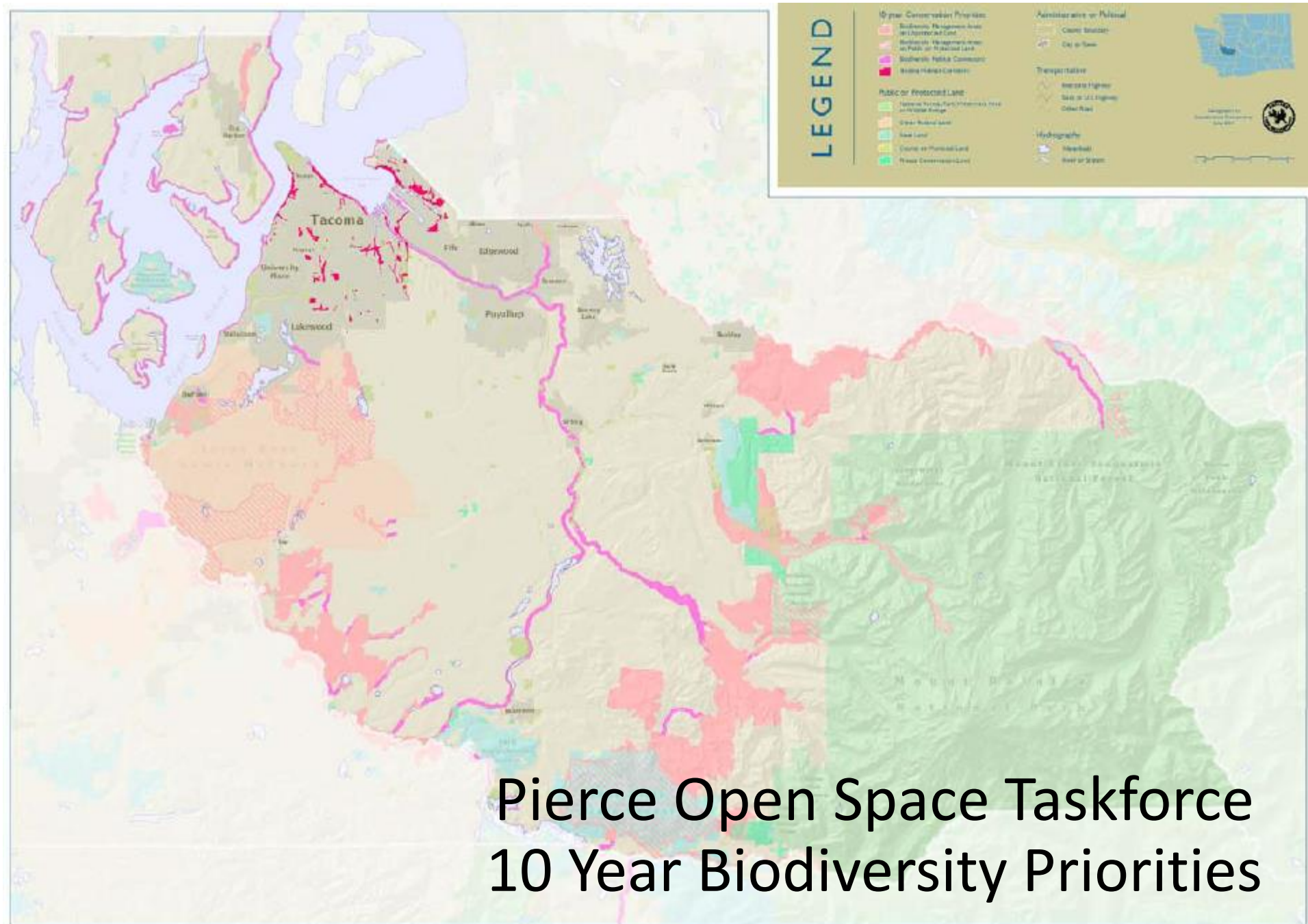
Watershed Characterization Indicator Base Lands: Ecologically Functional, High Development Pressure Lands



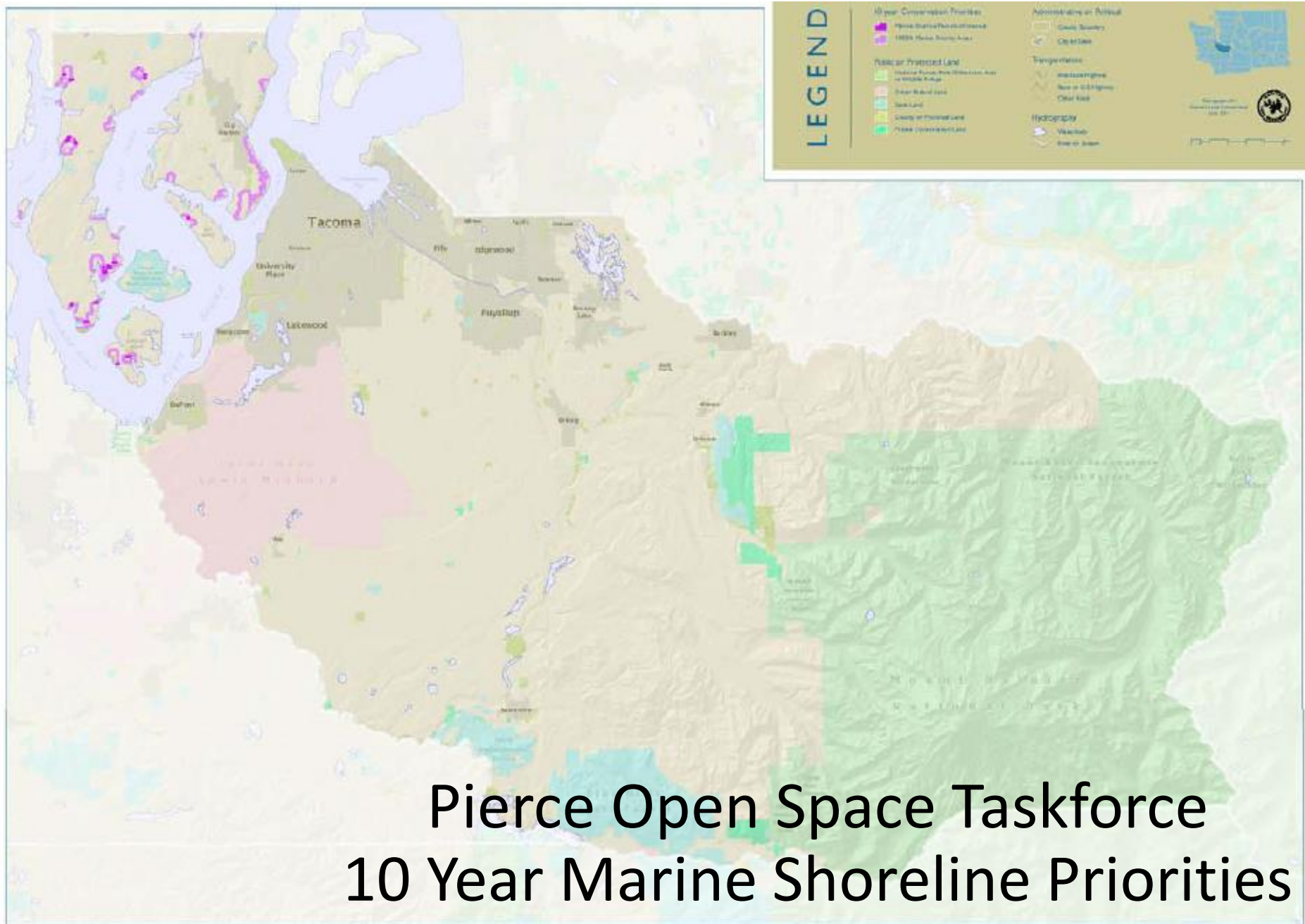
Map not to be used for local planning or decision making

Analysis: Ken Pierce, WDFW







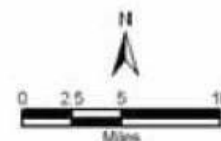


Revised Biodiversity Network

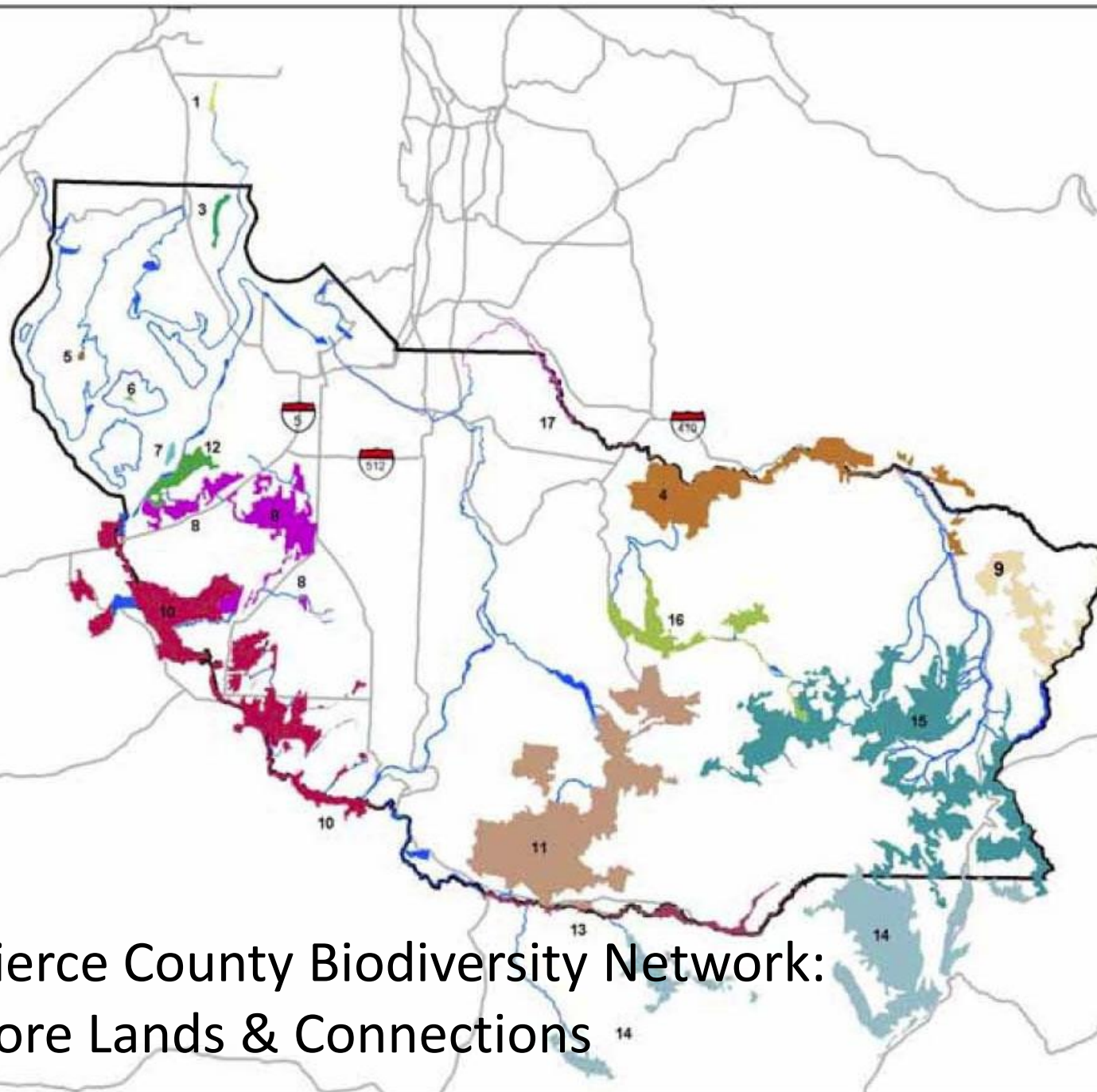
Revised Core Polygons and Connections

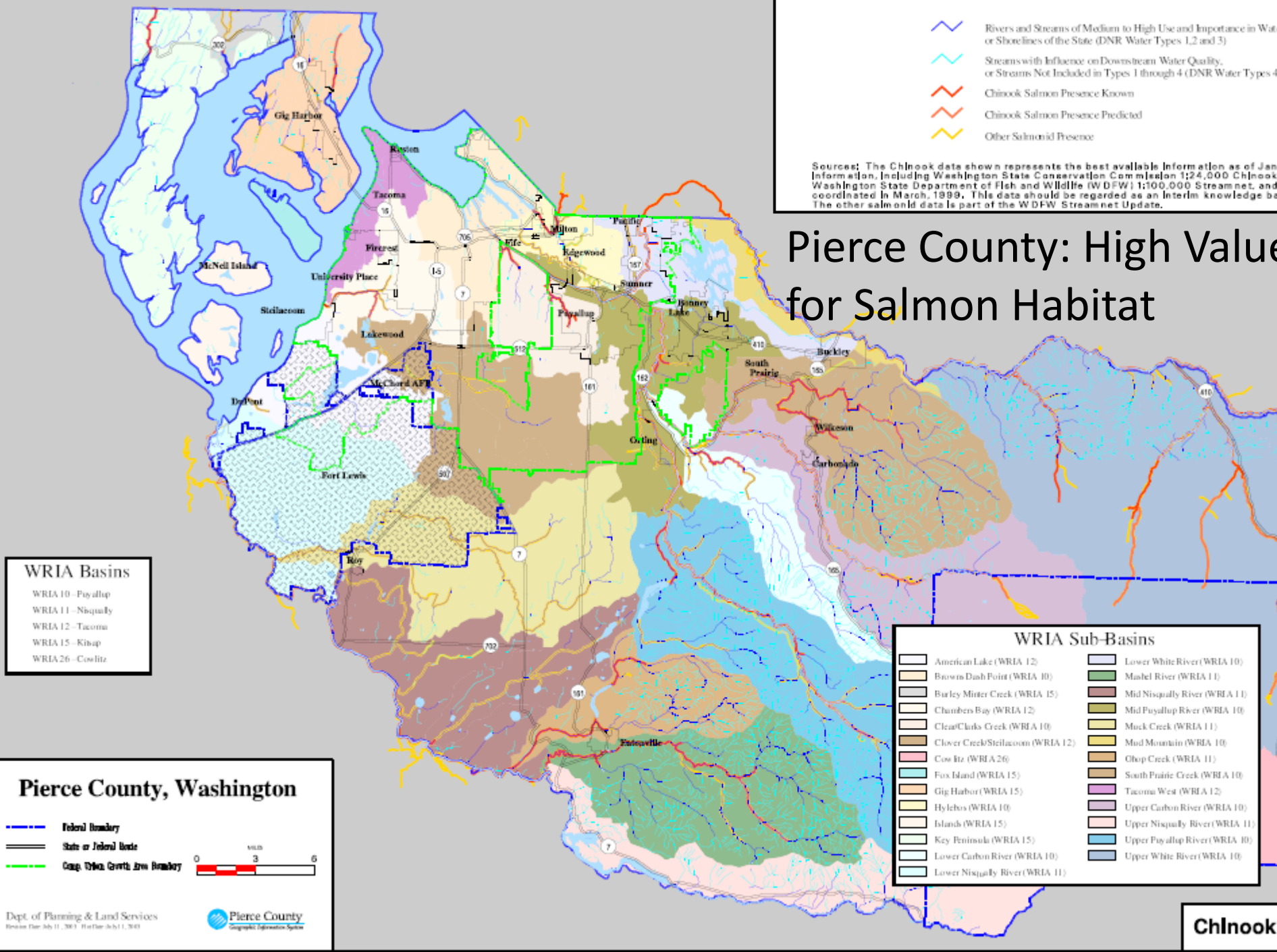
LEGEND

-  Pierce County Boundary
-  Highways
-  1 - Kitsap
-  3 - Gig Harbor
-  4 - Greenwater River
-  5 - Lake Bay
-  6 - McNeil Island
-  7 - Ketron Island
-  8 - Upland
-  9 - Norse Peak
-  10 - Nisqually Delta
-  11 - Puyallup River
-  12 - Shoreline
-  13 - Upper Nisqually
-  14 - Lewis County
-  15 - Rainer
-  16 - White River
-  17 - Lower White River
-  Revised Connectors



Pierce County Biodiversity Network:
Core Lands & Connections





County Wetland Inventory

- County Wetland Inventory
- National Wetland Inventory
- Additional Wetlands Identified by Buildable Lands Project

Source:

In addition to the delineation and analysis report updates, the following sources were used to identify wetland areas:

- 1) Soil Survey of Pierce County Area, Washington, 1979, Soil Conservation Service, US Dept. of Agriculture (USDA)
- 2) National Wetland Inventory Maps, US Dept. of Interior, Fish and Wildlife Service, 1973
- 3) Flood Insurance Rate Maps (FIRM) & Flood Insurance Study Maps, Federal Emergency Management Agency
- 4) Aerial photographs, Dept. of Natural Resources, 1985, (Assessment/Inventory Office aerials)
- 5) Pierce County Digital Orthophotography, 1998 to present

Pierce County Code Title 18E regulates activities within and around wetlands

Note: Further evaluation may be necessary to determine exact wetland boundary.

Note on Buildable Lands Project: Additional wetlands were only identified in the urban areas of the county, and only on land considered vacant, underdeveloped or redevelopable.

The boundaries of wetlands are approximate and are intended only to provide an indication of the presence of wet areas. Additional wetlands that have not been mapped may be present.

Pierce County Wetland Inventory, Adopted Dec. 30, 1997 - Ordinance No. 97-84
Effective Feb. 2, 1998

Pierce County, Washington

- Cities in Pierce County
- State or National Park/Wildlife Refuge
- Military/Other Federal Land

Miles
0 1 2 4 6 8

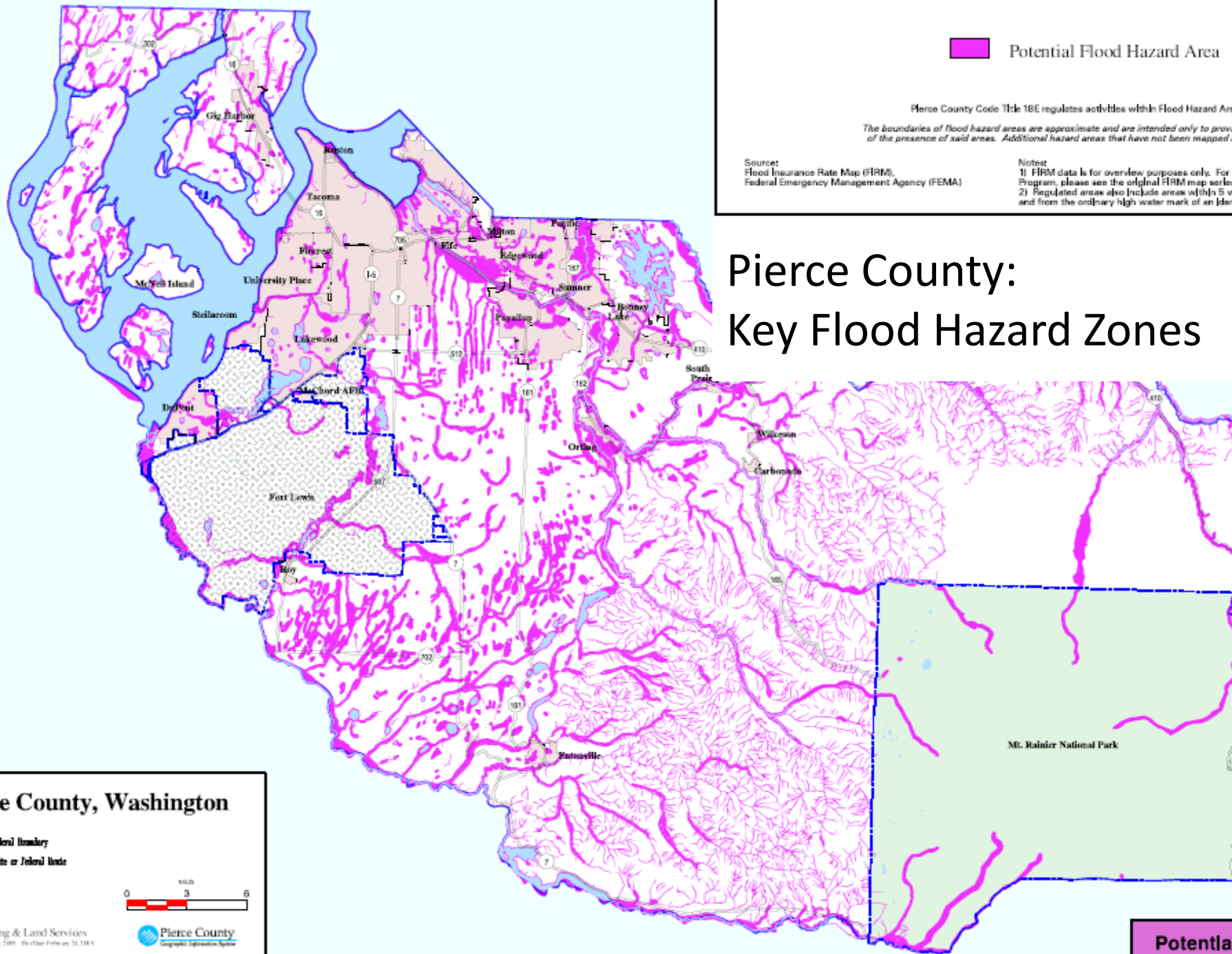


Department of Planning and Land Services
REVISION DATE: 4/19/2008 PLOTTED DATE: 10/20/08 10:40:04 AM

Pierce County: High Value Wetlands

Map Disclaimer: The map features are approximate and are intended only to provide an indication of the presence of wet areas. Additional wetlands that have not been mapped may be present. The County assumes no liability for reliance on this map for any purpose. ALL RIGHTS ARE RESERVED. THE COUNTY MAKES NO WARRANTY OF ANY KIND, EITHER EXPRESS OR IMPLIED, REGARDING THE ACCURACY, COMPLETENESS, OR SUITABILITY OF THIS INFORMATION FOR ANY PURPOSE.

This map was prepared by the Pierce County Department of Planning and Land Services. It is the property of Pierce County and is loaned to you for your use only. It is not to be reproduced, stored in a retrieval system, or transmitted in any form or by any means, electronic, mechanical, photocopying, recording, or by any information storage and retrieval system, without prior written permission from Pierce County.





CAPITAL IMPROVEMENT PROJECTS

PIERCE COUNTY SURFACE WATER MANAGEMENT PROJECTS

