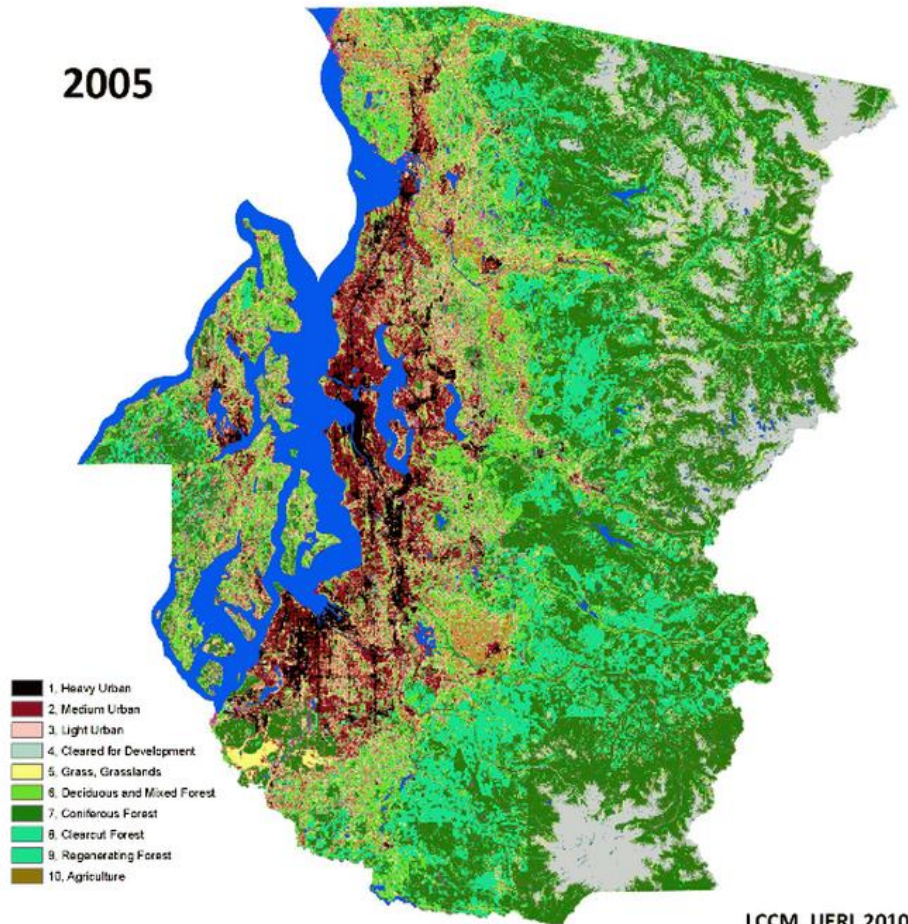


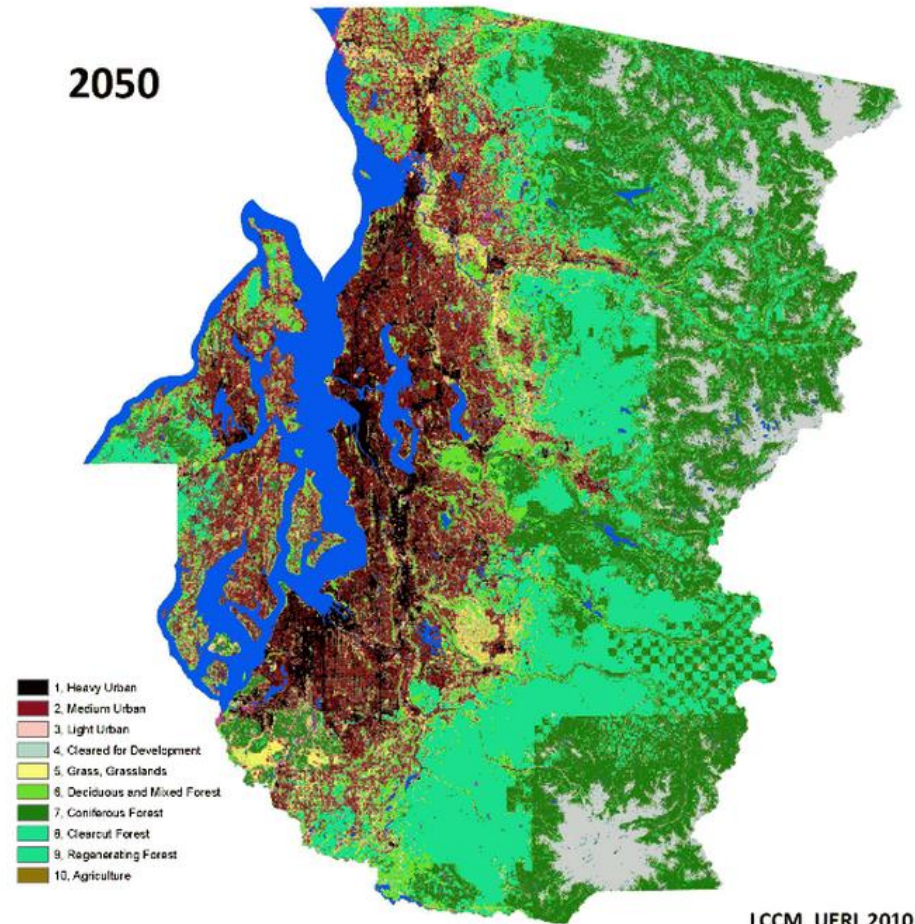
Open Space is...

2005



LCCM, UERL 2010

2050



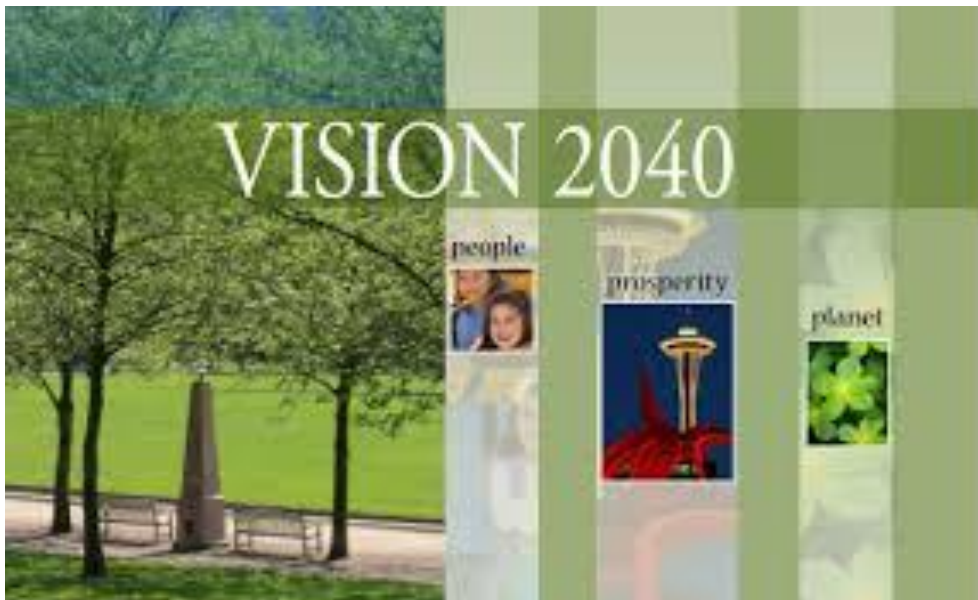
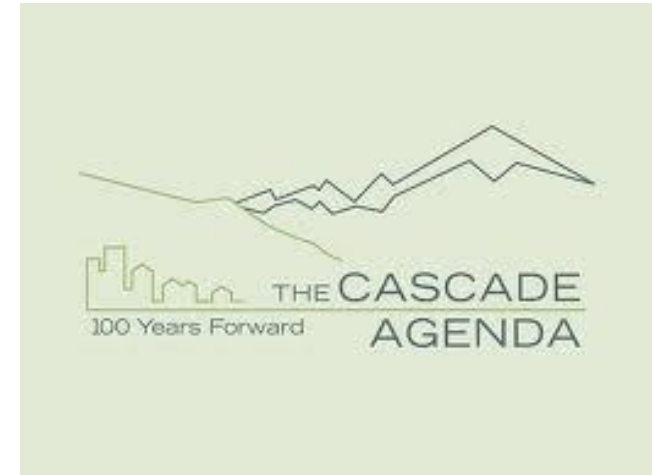
LCCM, UERL 2010

Shared History, Shared Future

Builds upon past and current regional planning: PSP Action Agenda, Vision 2040, the Cascade Agenda, and Mountains to Sound Greenway

PugetSoundPartnership

LEADING PUGET SOUND RECOVERY

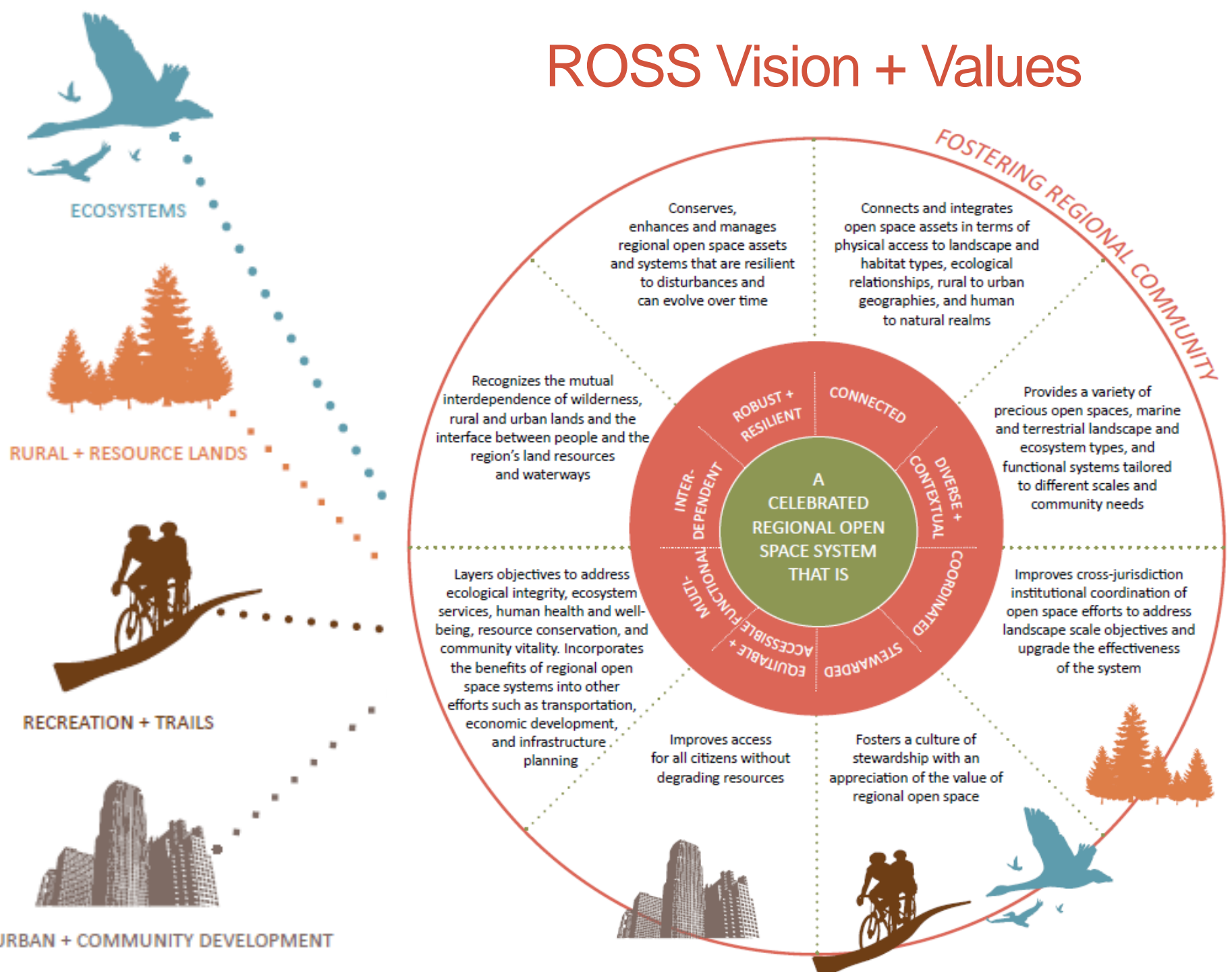


The ROSS Approach...



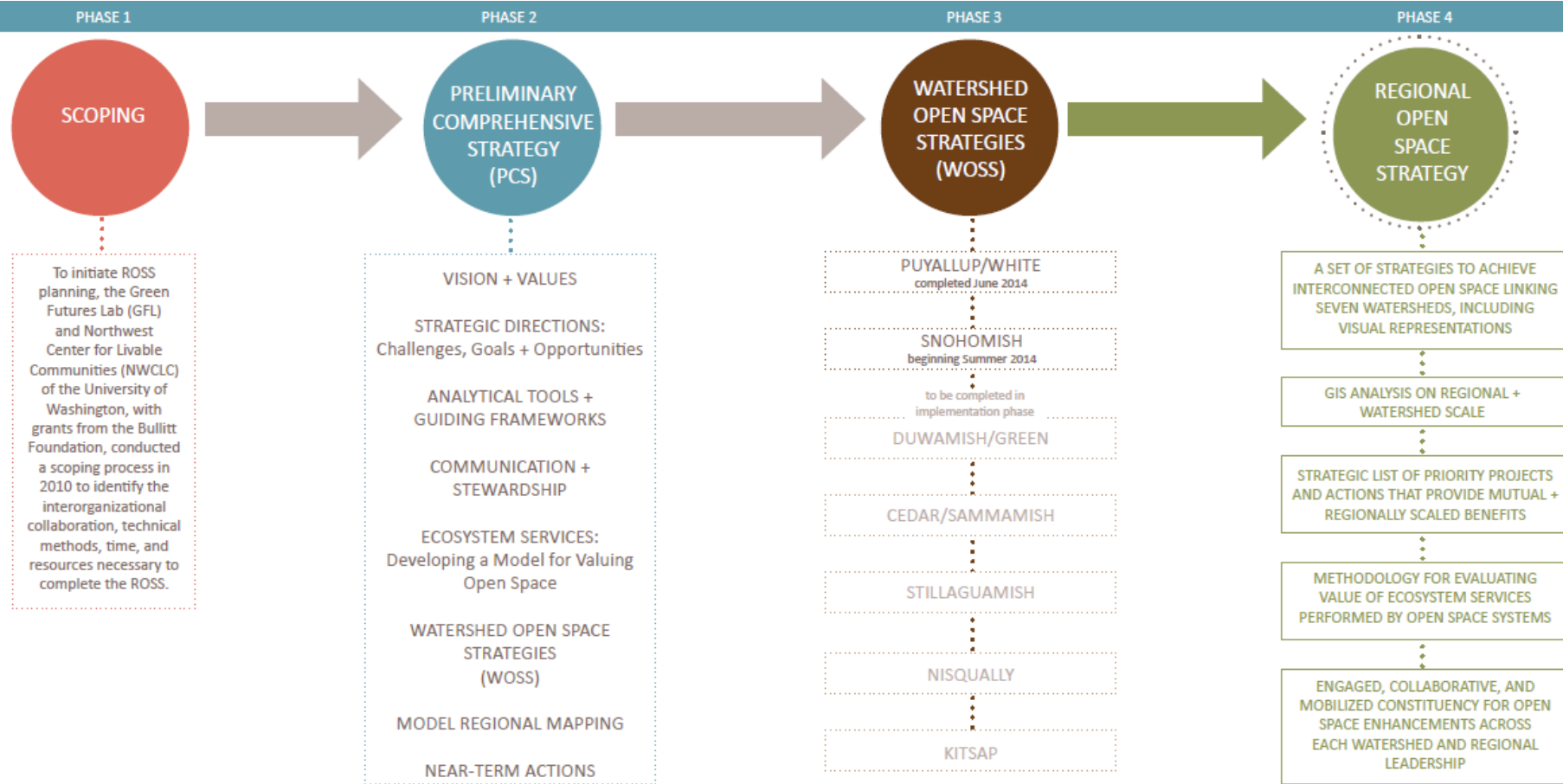
- Building a regional open space system
- Advancing the most important projects and actions
- Improving regional coordination
- Expanding on analytical tools
- Building a regional community

ROSS Vision + Values



Key Work Products + Work Plan

KEY WORK PRODUCTS



LEADERSHIP

STAFF + CONSULTATIVE GUIDANCE: Green Futures Lab, Northwest Center for Livable Communities, The Bullitt Foundation, and National Park Service work together as the ROSS Project Team.

EXECUTIVE COMMITTEE (EC): In early 2012 an esteemed Executive Committee was formed.

GOVERNANCE + FINANCE SUB-COMMITTEE: An EC sub-committee will explore governance, coordination, and funding options.

OUTREACH + COMMUNICATIONS SUB-COMMITTEE: An EC sub-committee will establish a communications strategy.

ECOSYSTEMS TASK FORCE: A taskforce of expertise from the UW, Earth Economics, the Natural Capital Project, and the Cascadia Ecosystem Services Partnership will explore opportunities to integrate ecosystem services evaluation into ROSS.

HEALTH, SOCIAL EQUITY, CLIMATE CHANGE, BIODIVERSITY AND ECONOMIC DEVELOPMENT TASK FORCES: Taskforces led by regional experts will explore the role open space plays in advancing these key regional challenges, integrate them into ecosystems analysis and the overall ROSS.

TECHNICAL ADVISORY COMMITTEE: Ecosystems, Rural + Resource Lands, Urban + Community Development, and Recreation + Trails. They developed sub-visions, challenges and opportunities, resources, and strategic directions to inform the PCS.

WATERSHED TASK FORCES: A taskforce associated with each WOSS will be formed to help guide open space strategy development in each watershed.

Getting The Region Involved...

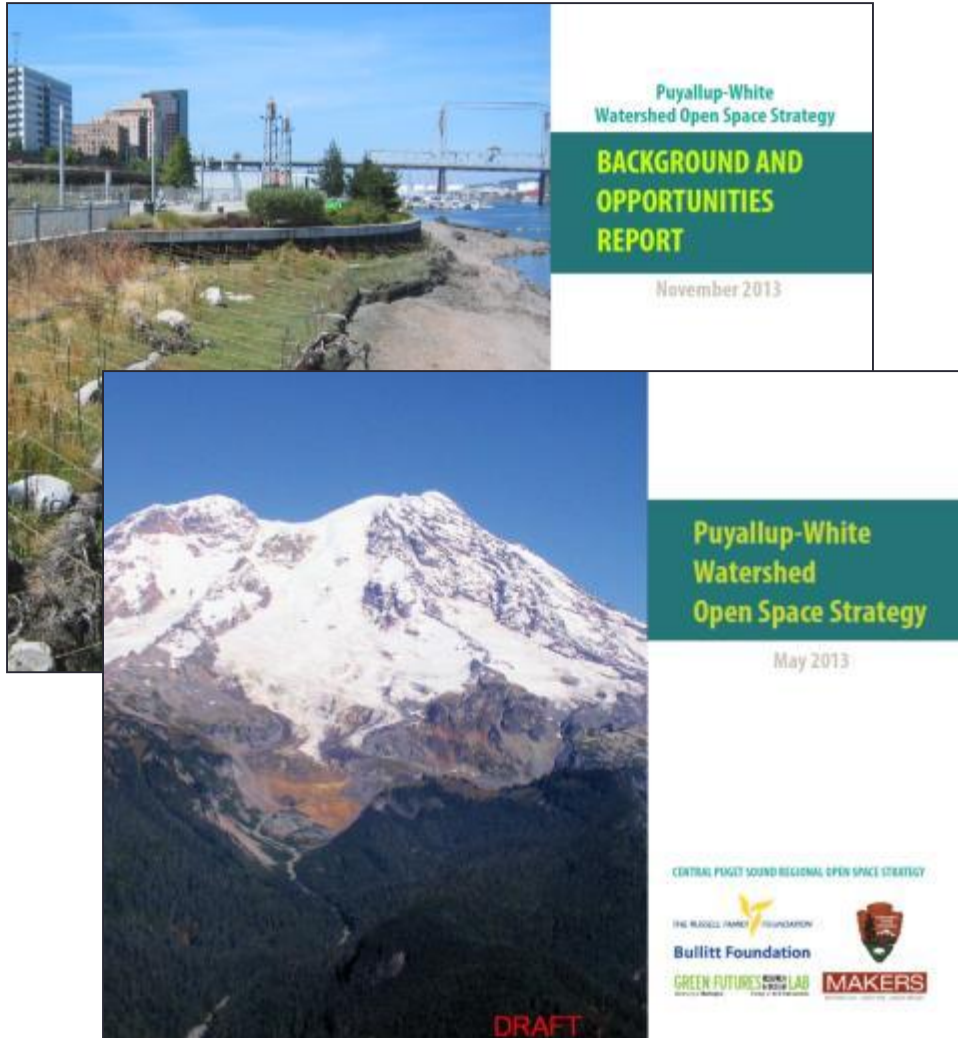
Scoping



Technical Advisory Committees + Strategy Development



Watershed Open Space Strategies



- Watershed Advisory Group
- Ongoing GIS data collection and review of current initiatives/projects
- Watershed Listening Tour
- Preliminary synthesis to link opportunities
- Advancing Key WOSS Proposals

UW Environmental Mgmt. Student Findings

| | Forest Resources | Forest Building | Biodiversity Carbon | Biodiversity Habitat | Carbon Habitat | Water Quality | Water Quantity | Water Use | Water Pollution |
|---|---------------------|--------------------|------------------------|-------------------------|-------------------|------------------|-------------------|--------------|--------------------|
| Example | 1 | 2 | 3 | 4 | 5 | 6 | 7 | 8 | 9 |
| Biochemicals, natural medicines | 10 | 20 | 30 | 40 | 50 | 60 | 70 | 80 | 90 |
| Recreation and tourism | 10 | 20 | 30 | 40 | 50 | 60 | 70 | 80 | 90 |
| Carbon sequestration | 10 | 20 | 30 | 40 | 50 | 60 | 70 | 80 | 90 |
| Coastal protection | 10 | 20 | 30 | 40 | 50 | 60 | 70 | 80 | 90 |
| Crop pollination | 10 | 20 | 30 | 40 | 50 | 60 | 70 | 80 | 90 |
| Habitat risk | 10 | 20 | 30 | 40 | 50 | 60 | 70 | 80 | 90 |
| Managed timber production | 10 | 20 | 30 | 40 | 50 | 60 | 70 | 80 | 90 |
| Marine fish aquaculture | 10 | 20 | 30 | 40 | 50 | 60 | 70 | 80 | 90 |
| Marine water quality | 10 | 20 | 30 | 40 | 50 | 60 | 70 | 80 | 90 |
| Offshore wind energy | 10 | 20 | 30 | 40 | 50 | 60 | 70 | 80 | 90 |
| Recreation | 10 | 20 | 30 | 40 | 50 | 60 | 70 | 80 | 90 |
| Reservoir hydropower production (water yield) | 10 | 20 | 30 | 40 | 50 | 60 | 70 | 80 | 90 |
| Sediment retention | 10 | 20 | 30 | 40 | 50 | 60 | 70 | 80 | 90 |
| Water purification | 10 | 20 | 30 | 40 | 50 | 60 | 70 | 80 | 90 |
| Wave energy | 10 | 20 | 30 | 40 | 50 | 60 | 70 | 80 | 90 |

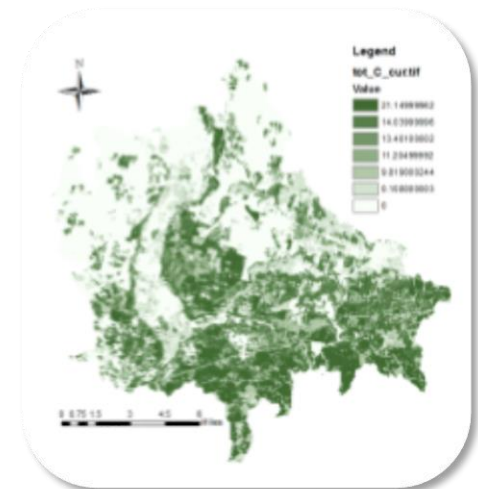


InVEST

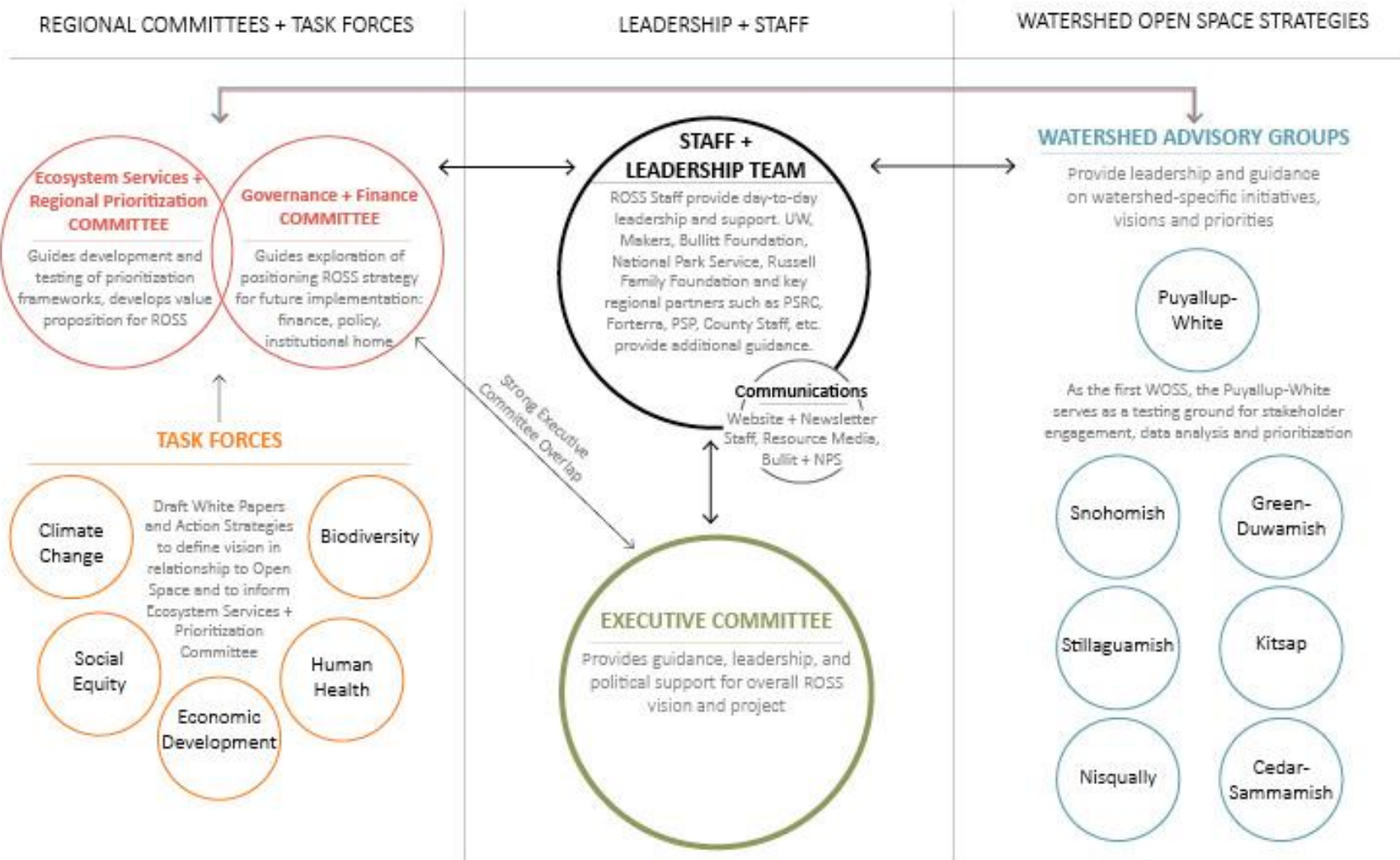
integrated valuation of
environmental services
and tradeoffs

Models

[Aesthetic Quality](#)
[Biodiversity](#)
[Carbon](#)
[Coastal Protection](#)
[Coastal Vulnerability](#)
[Crop Pollination](#)
[Habitat Risk Assessment](#)
[Managed Timber Production](#)
[Marine Fish Aquaculture](#)
[Marine Water Quality](#)
[Offshore Wind Energy](#)
[Overlap Analysis](#)
[Recreation](#)
[Reservoir Hydropower Production \(Water Yield\)](#)
[Sediment Retention](#)
[Water Purification](#)
[Wave Energy](#)



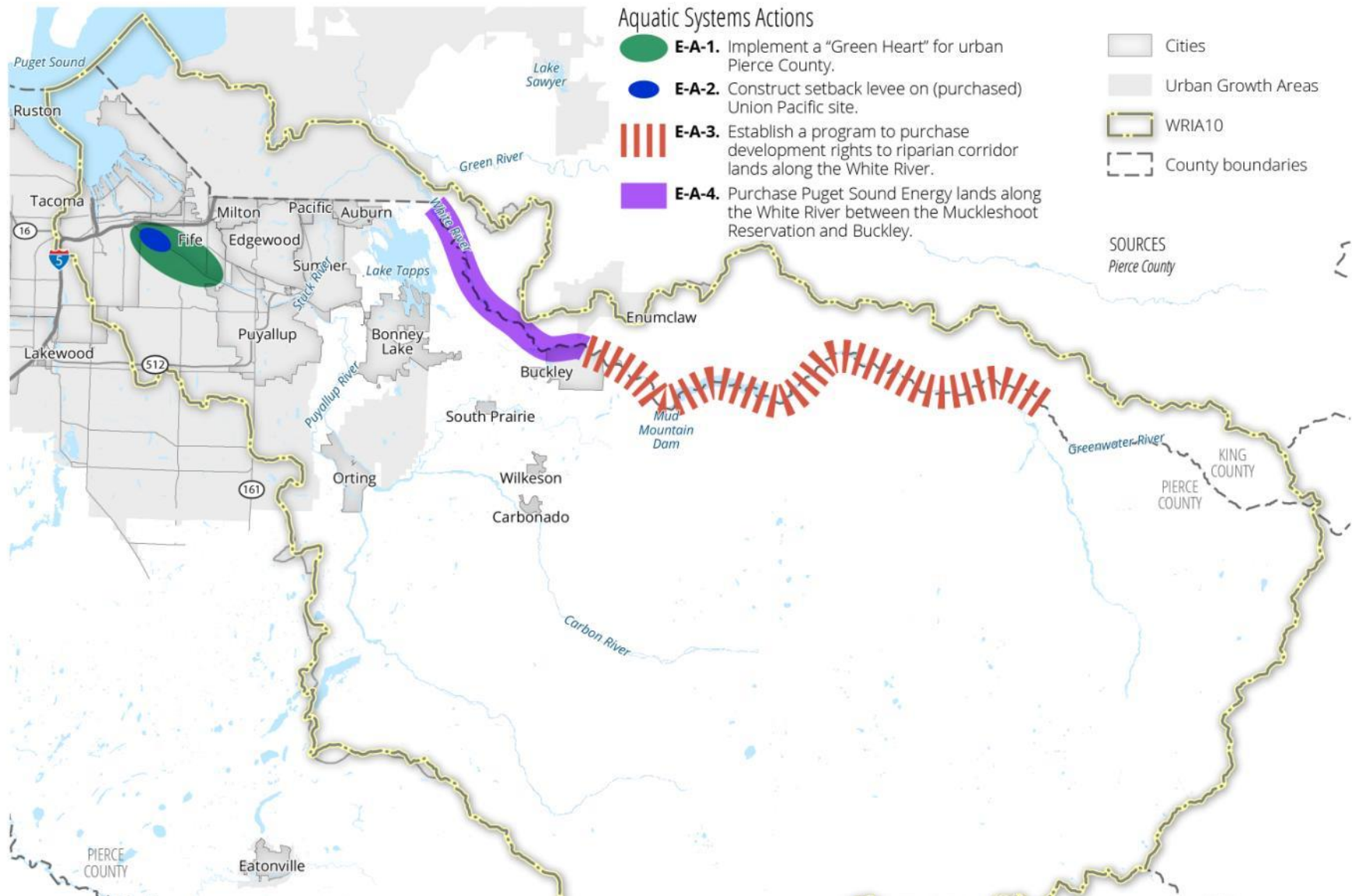
PROJECT LEADERSHIP



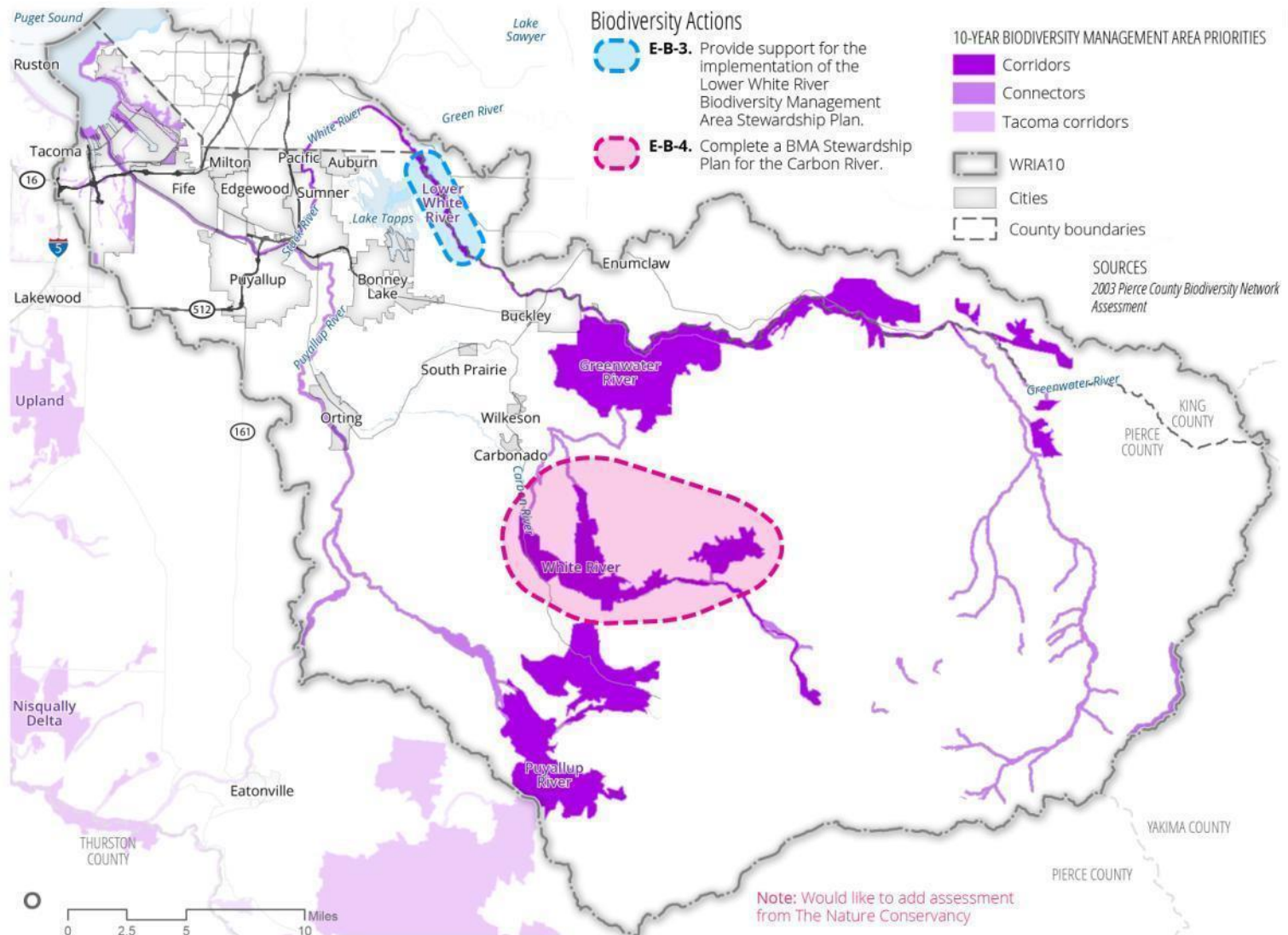
ECOSYSTEMS



Ecosystems – Aquatic Systems



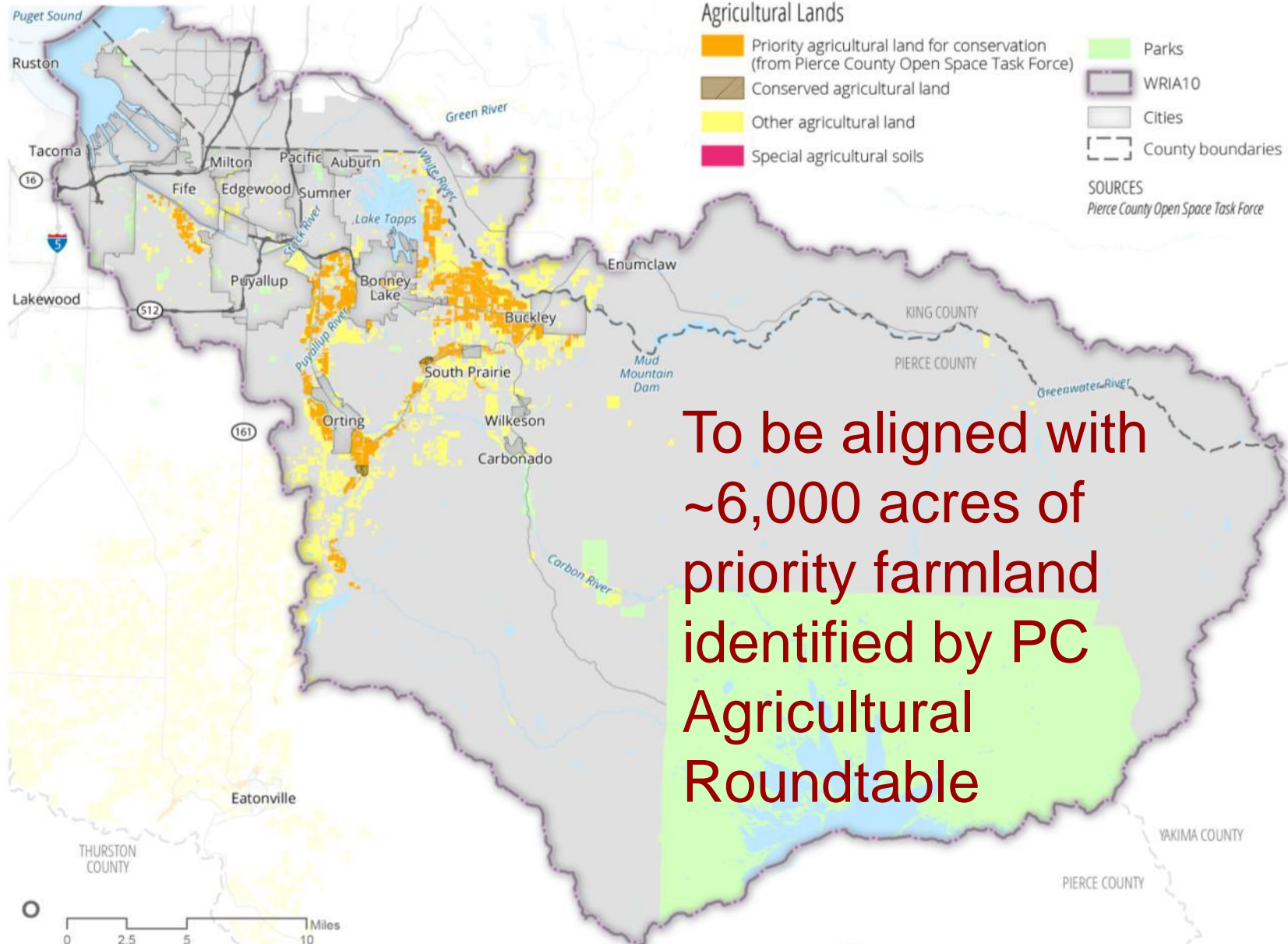
Ecosystems – Biodiversity



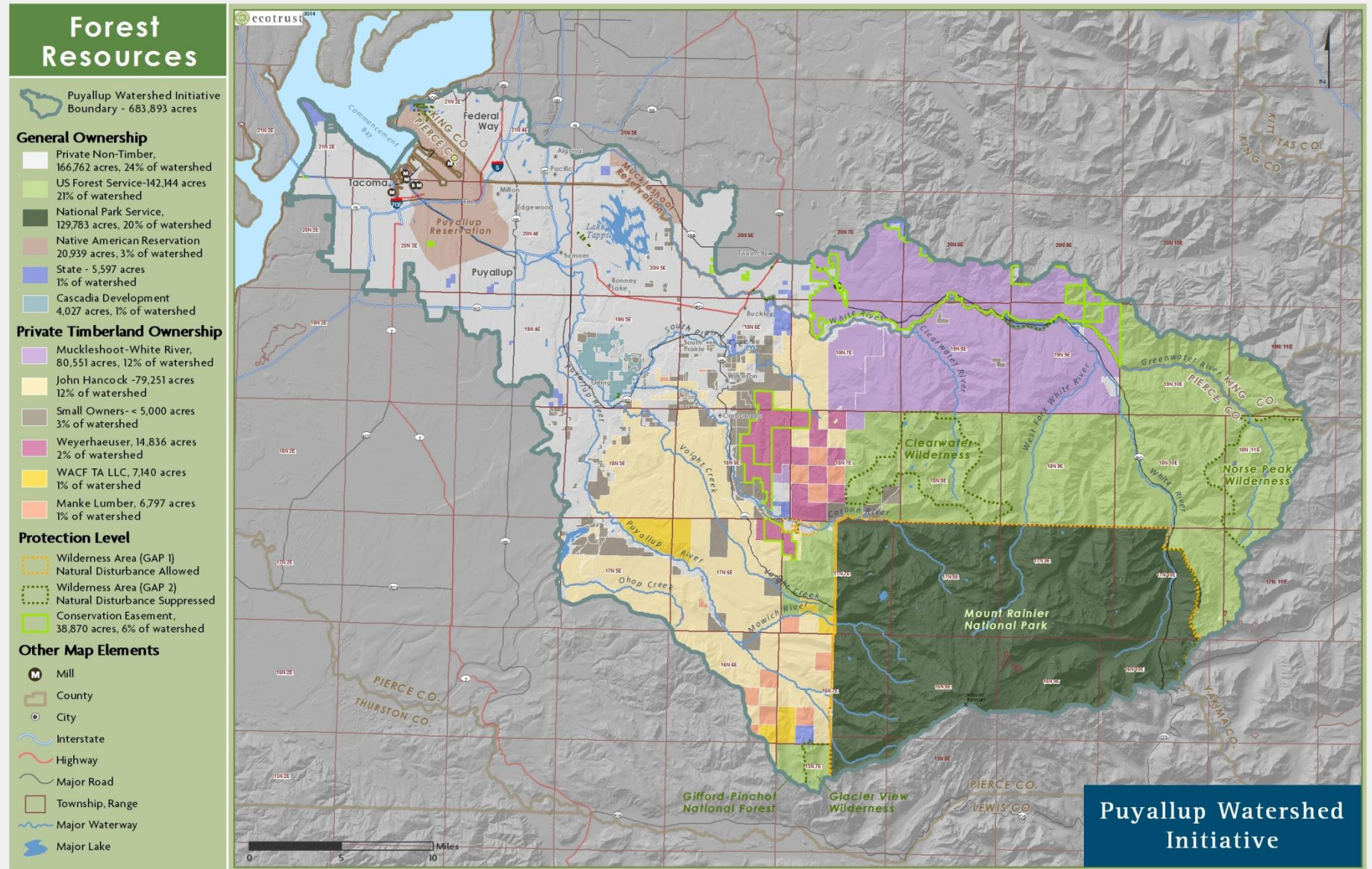
RESOURCE LANDS AND WORKING LANDSCAPES



AGRICULTURAL LANDS



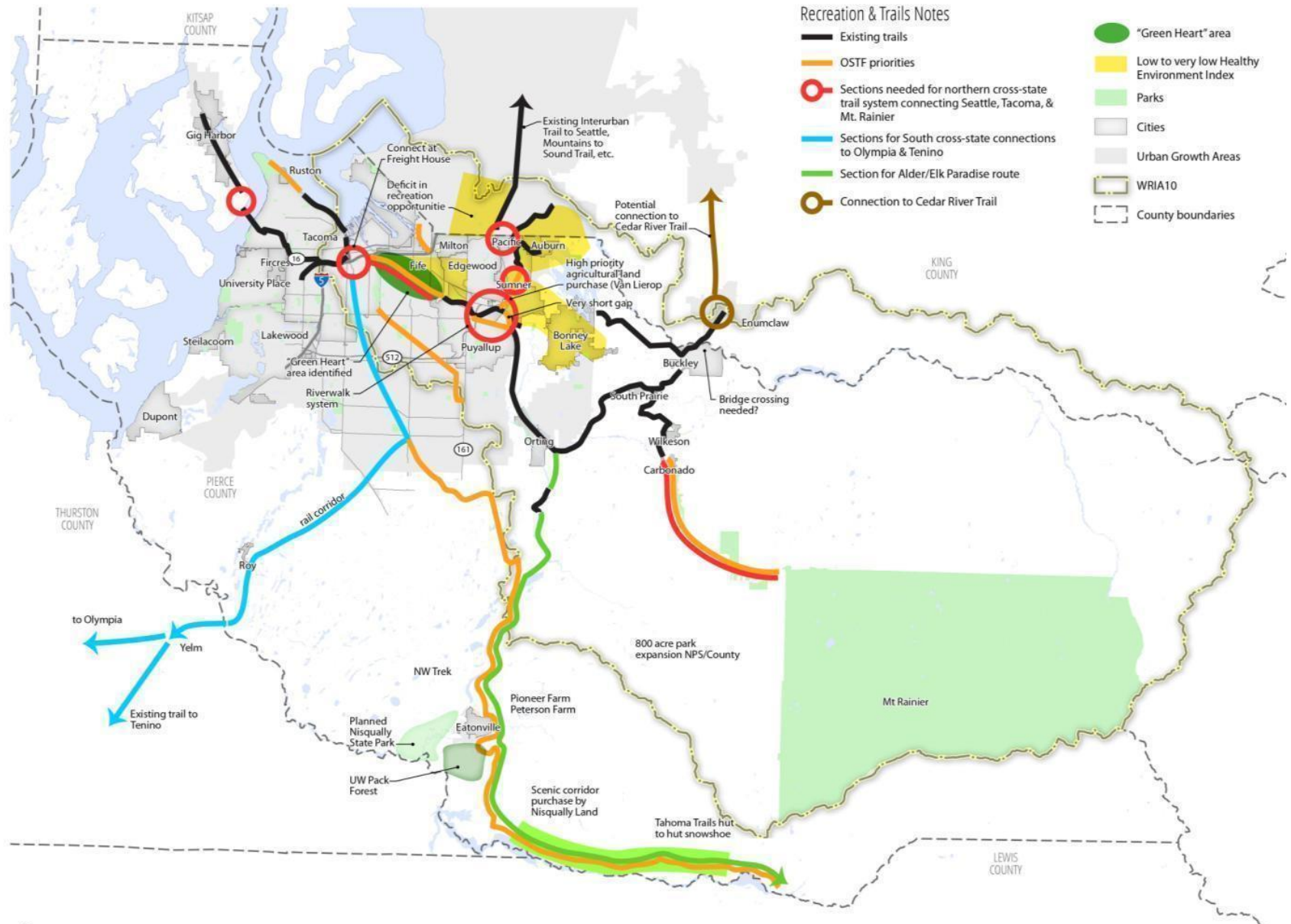
WORKING FORESTS



HEALTH, ACTIVE LIVING & RECREATION



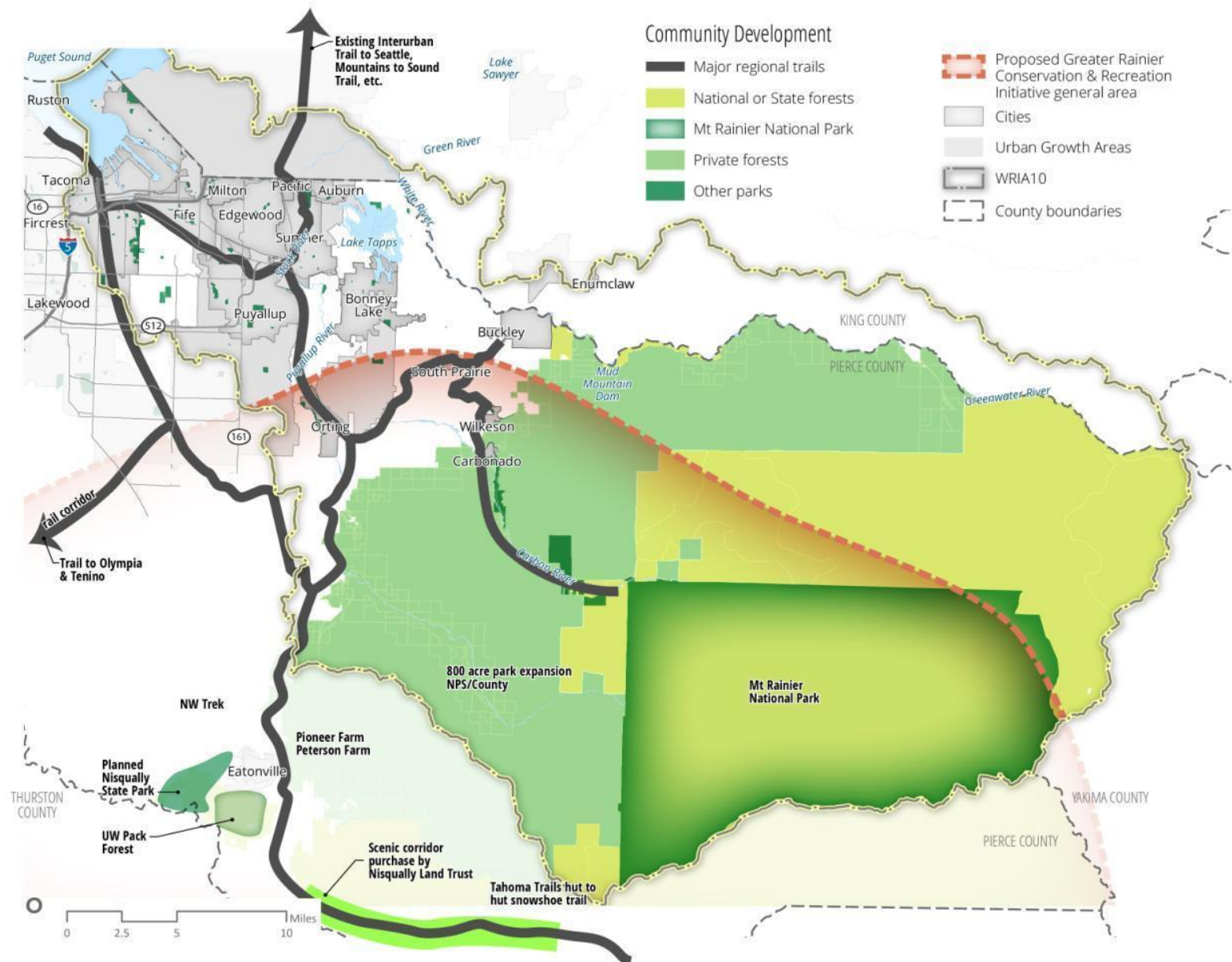
HEALTH, ACTIVE LIVING & RECREATION



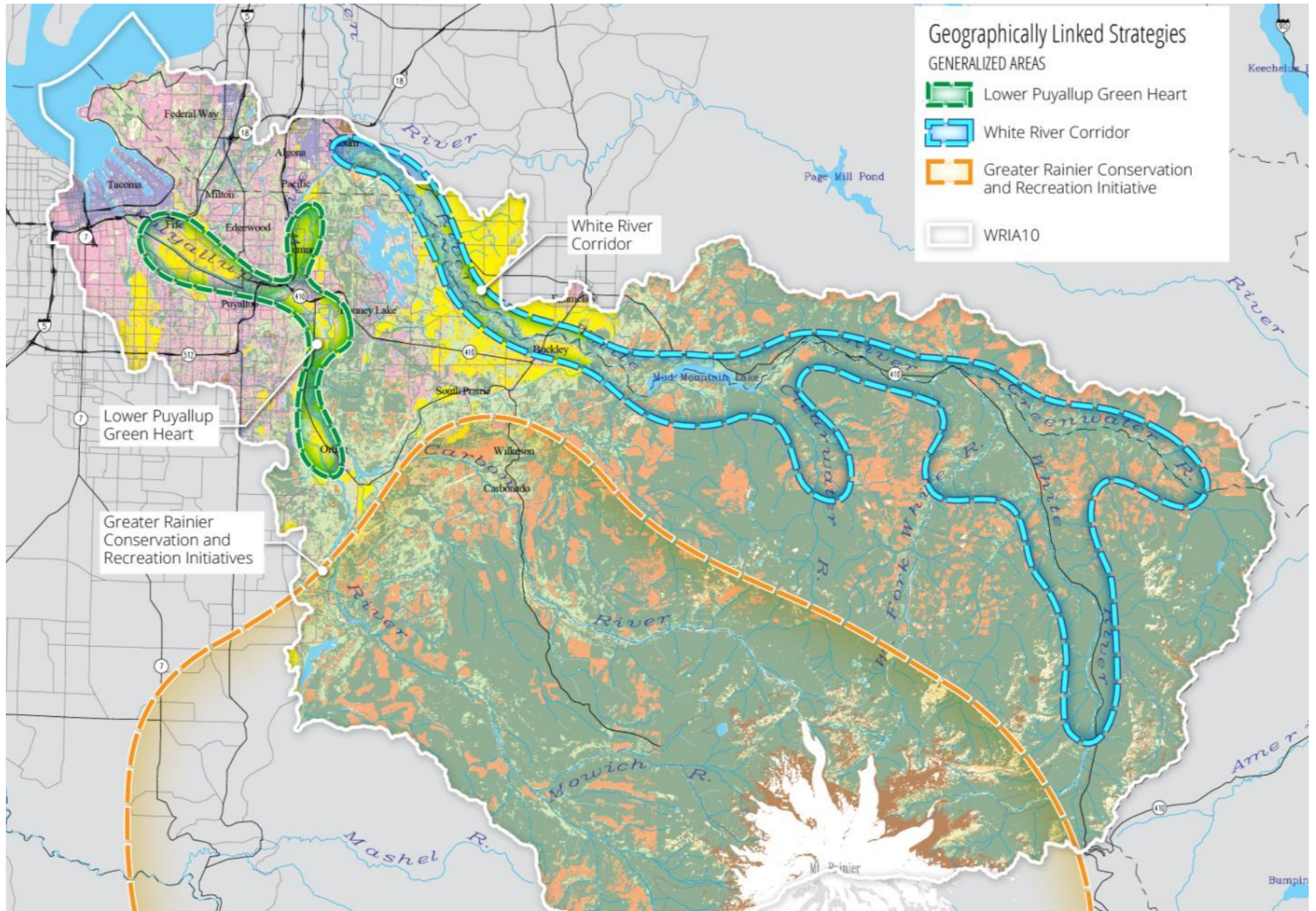
COMMUNITY DEVELOPMENT



COMMUNITY DEVELOPMENT



GEOGRAPHICALLY LINKED STRATEGIES



How does ROSS define Open Space?

OPEN SPACE is an embracing term for a diverse spectrum of lands across a rural and urban continuum on large and small scales. Open space includes and is not limited to:

- *wilderness lands*
- *resource lands for agricultural and timber production*
- *national, state, county and city parks*
- *water bodies and wetlands*
- *local and regional recreational trail systems*
- *urban green spaces like parkways, rain gardens, tree canopy, and green roofs*

OPEN SPACE SERVICES + BENEFITS CATEGORIES*

+ sample indicators



TASK FORCE
INDICATORS/PRIORITIES

BIODIVERSITY

HUMAN
HEALTH

CLIMATE
CHANGE

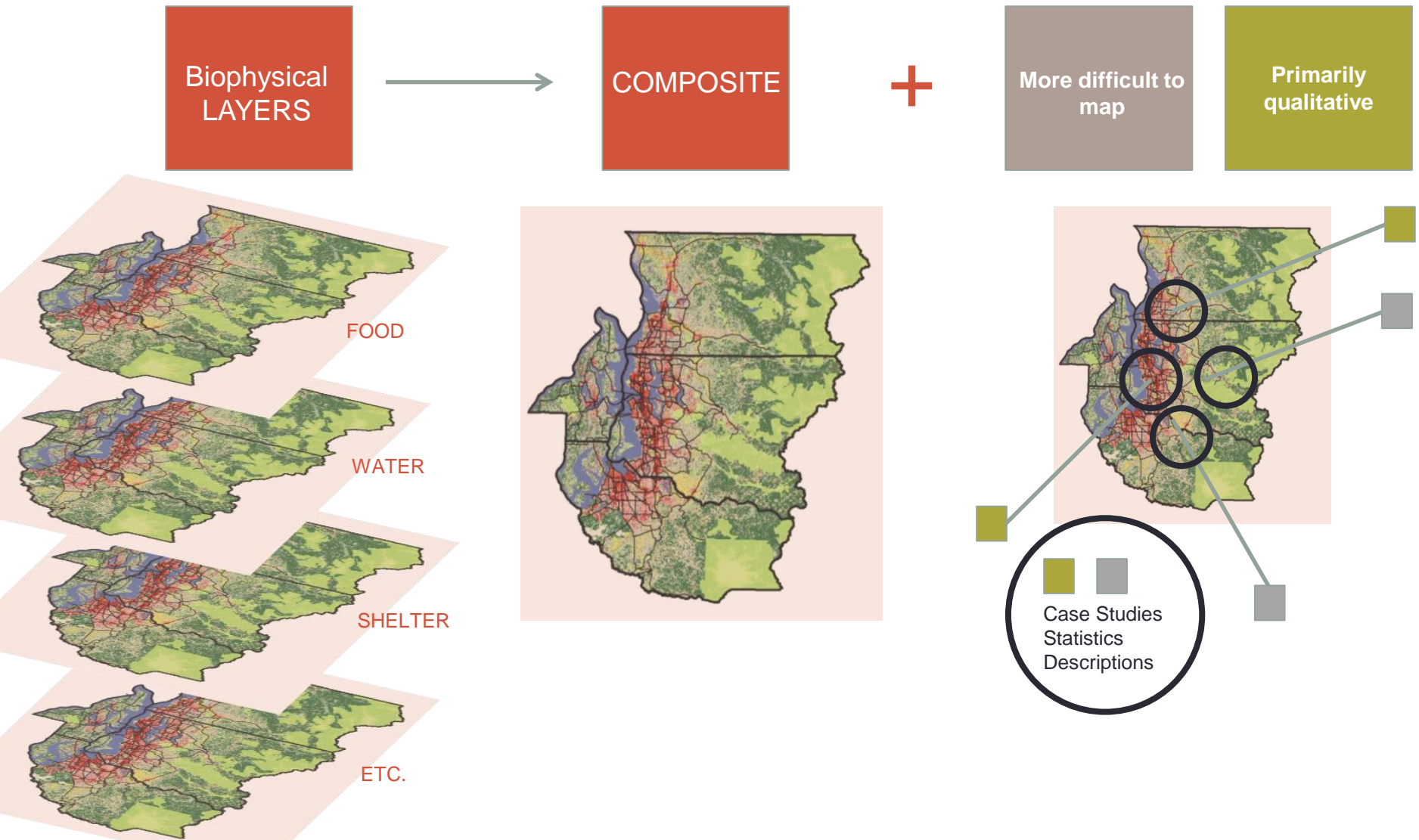
SOCIAL
EQUITY

ECONOMIC
DEVELOPMENT

* We recognize these may merit refining or combining. We do not see these as mutually exclusive, importantly they are reinforcing which demonstrate open space's multi-functional, multi-beneficial nature.

These will be over-layed to include hot spots, demographic data, priorities, indicators, etc.

But all are needed to tell the Open Space story...



Coming In July

ROSS

OPEN SPACE

WHY NOW

A SHARED HISTORY

WHAT WE DO

PEOPLE + PARTNERS

GET INVOLVED

BLOG/NEWS



THE REGIONAL OPEN SPACE STRATEGY (ROSS)

is a collaborative effort to integrate and elevate the many activities underway to conserve and enhance the ecological, economic, recreational and aesthetic vitality of the Central Puget Sound region.

WHAT IS OPEN SPACE?

Open Space is more than just parkland and forests. It's the systems that support life as we know it in the Puget Sound region.

[FIND OUT MORE](#)

“...a Regional Strategy to identify, preserve, and enhance regionally significant open space assets linked across

COMPLEX REGIONAL CHALLENGES

We are running out of time to address the biggest challenges of our day. Collaborative open space planning and decision-making can help.

[SEE OUR STUDIES](#)

OUR SHARED SPACE

The ROSS encompasses four counties, seven watersheds and one shared future.

[SEE THE MAP](#)

PEOPLE

Why people care about the ROSS



Ron Sims

Lorem ipsum dolor sit
amet, consectetur
adipiscing elit.



Denis Hayes

Lorem ipsum dolor sit
amet, consectetur
adipiscing elit.



Cynthia Welti

Lorem ipsum dolor sit
amet, consectetur
adipiscing elit.



Martha Kongsgaard

Lorem ipsum dolor sit
amet, consectetur
adipiscing elit.

[READ MORE](#)

GET INVOLVED

The ROSS is made up of people like you, and organizations like yours. Get involved. Elevate your work. We can have a greater impact when we work together.

[SIGN UP](#)

ROSS

[Staff & Leadership](#)
[ROSS Reports](#)
[FAQ](#)
[Newsletter Sign-up](#)
[Funder Thank Yous](#)

CONNECT



CONTACT US

Jeffrey W. Raker
Project Lead, Regional Open Space
Strategy (ROSS)
rossgfl@uw.edu OR
ross.gfl@gmail.com
206-708-0512

Green Futures Research &
Design Lab Northwest Center
for Livable Communities