



# ROSS

## A Regional Open Space Strategy for Central Puget Sound

Executive Committee Introductory Session  
Gould Hall, University of Washington  
January 10, 2012



NWCLC

**GREEN FUTURES** RESEARCH & DESIGN **LAB**  
University of Washington  
242 Gould Hall Box 355734 | Seattle, WA 98195 | [www.greenfutures.washington.edu](http://www.greenfutures.washington.edu)  
College of Built Environments

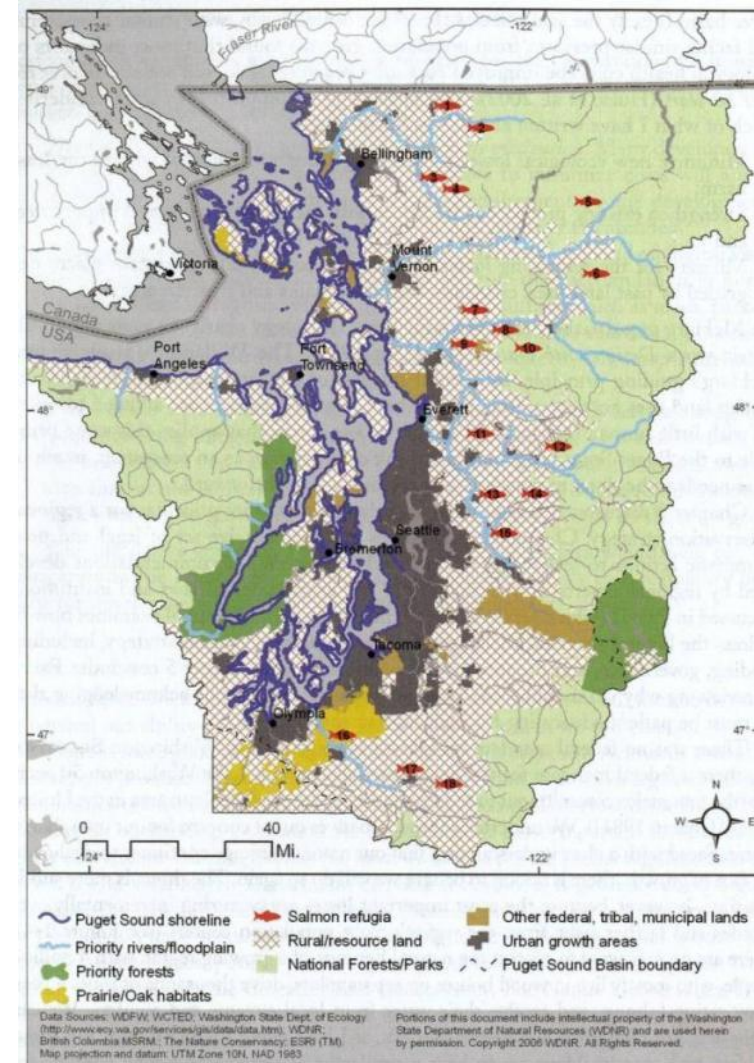
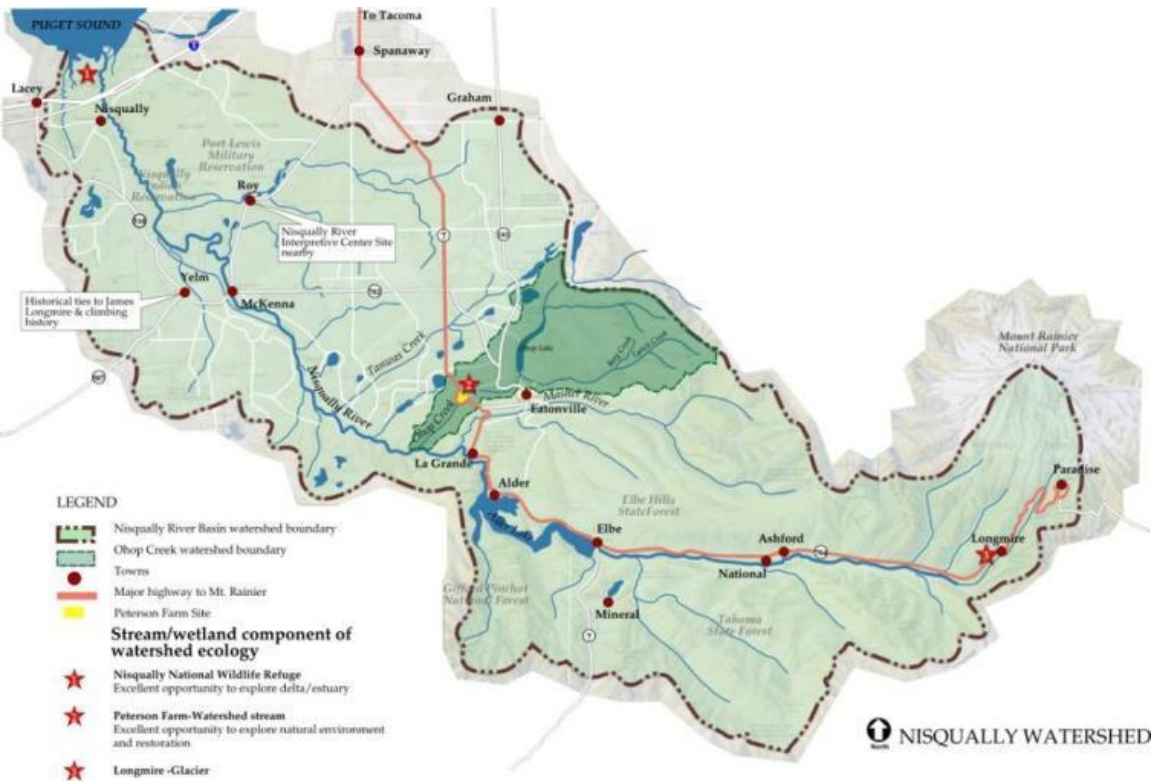


We've already got it pretty good

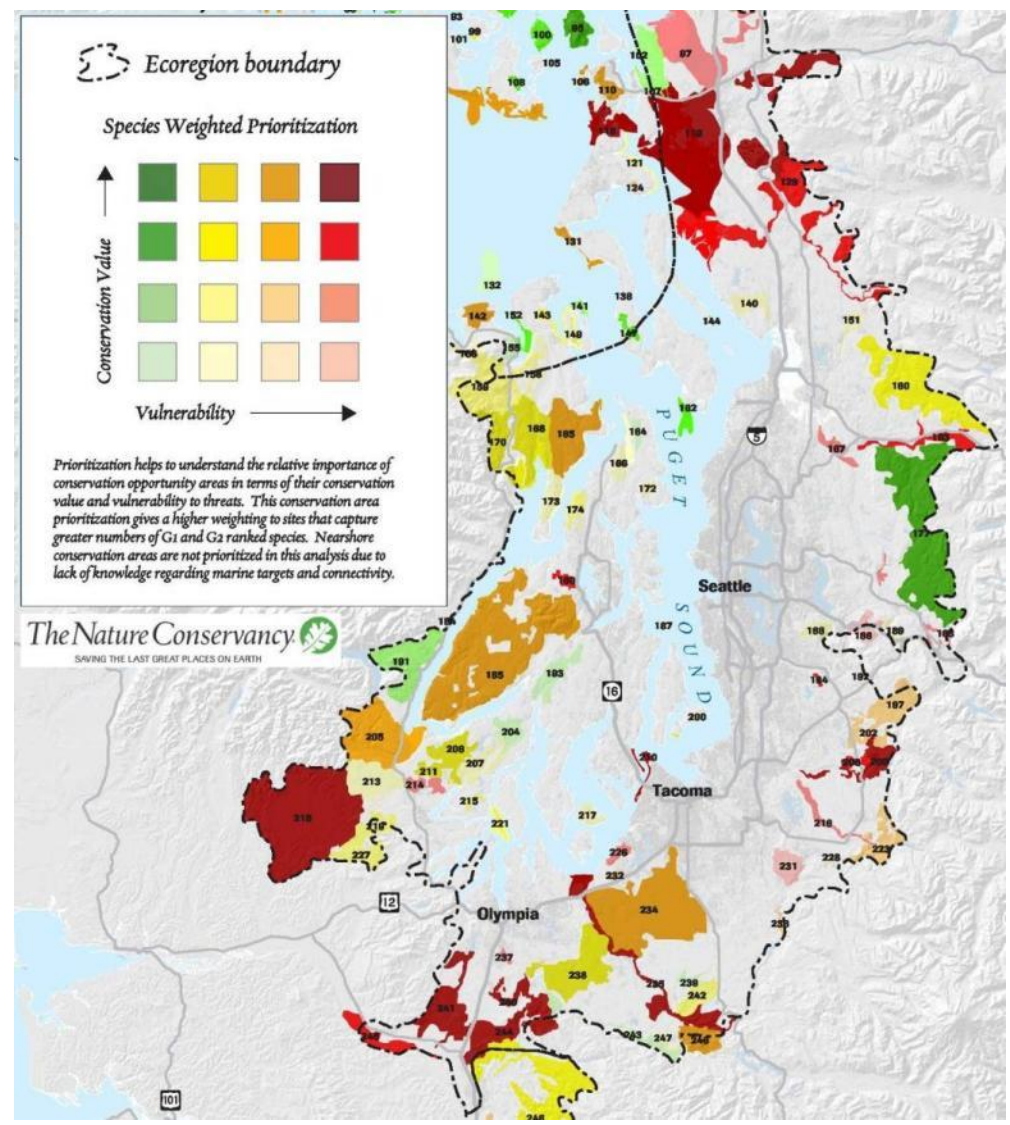
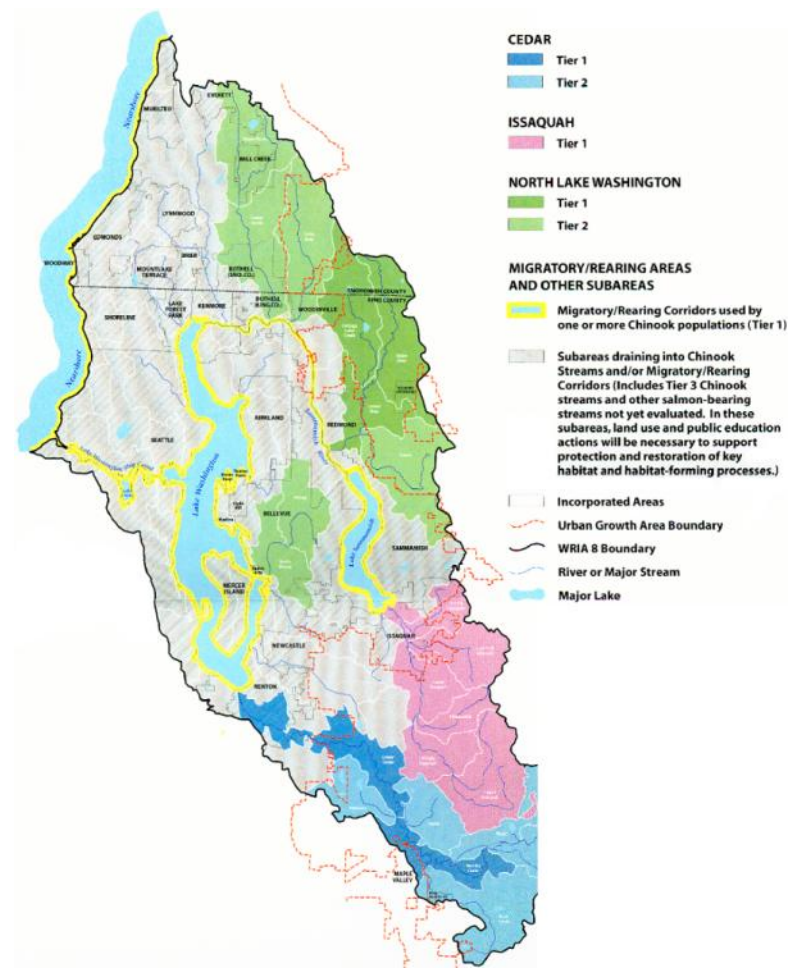




But it could be better especially the ecology -  
and there are some missing pieces

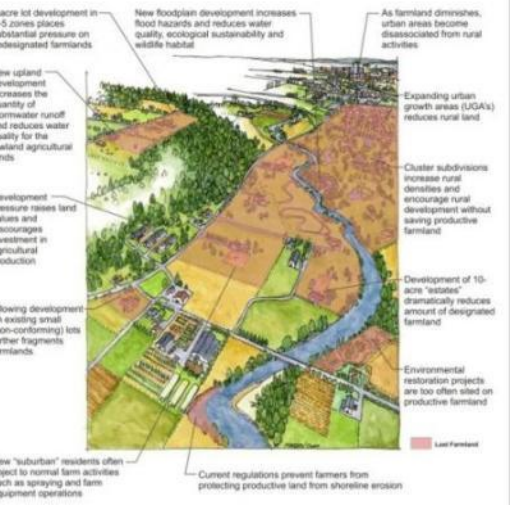


# Need to coordinate ecological priorities

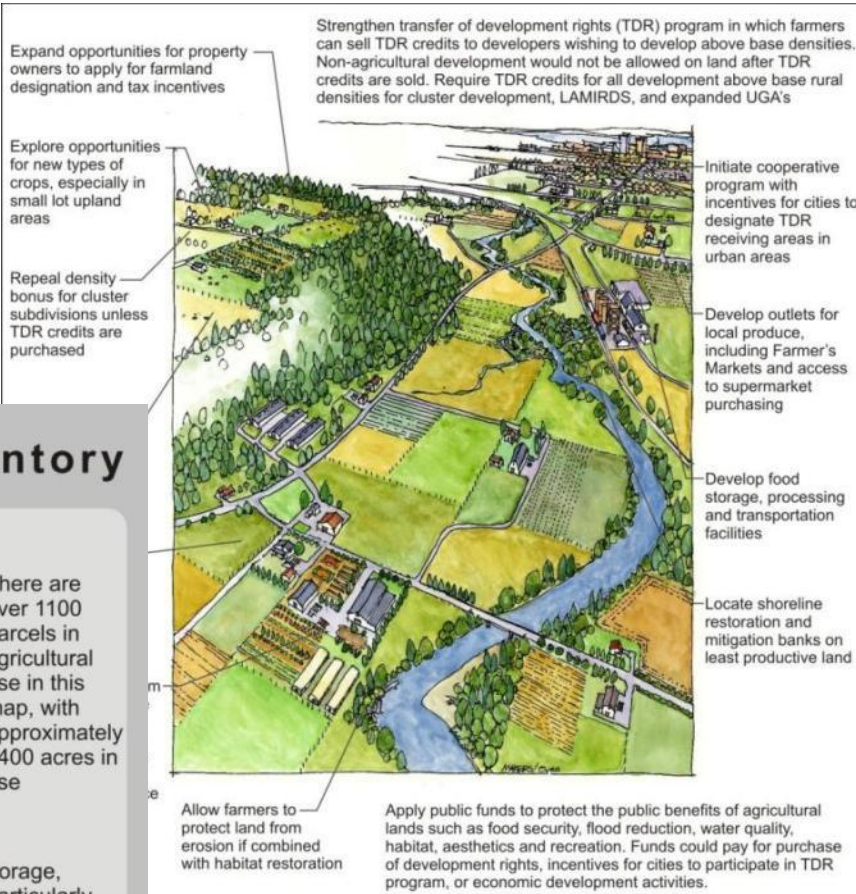




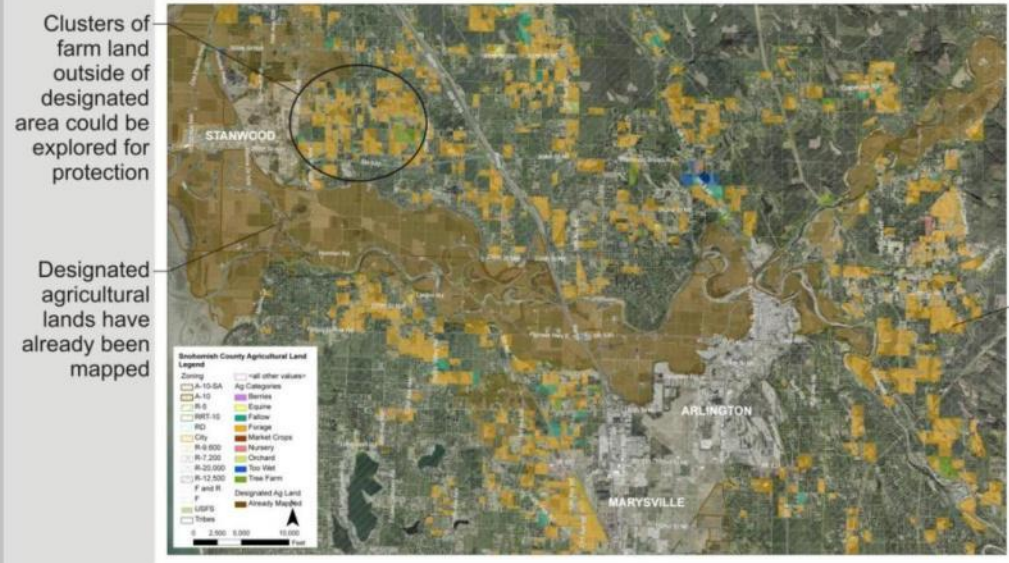
Snohomish County Agricultural Land  
Current Threats to Farmland



# Integrated resource lands conservation strategies



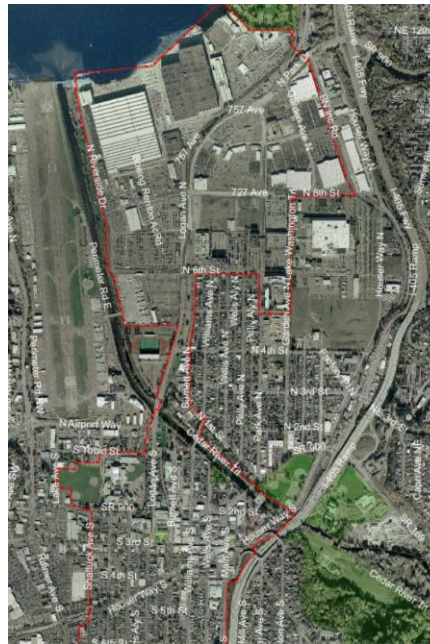
## Non-Designated Agricultural Lands Inventory



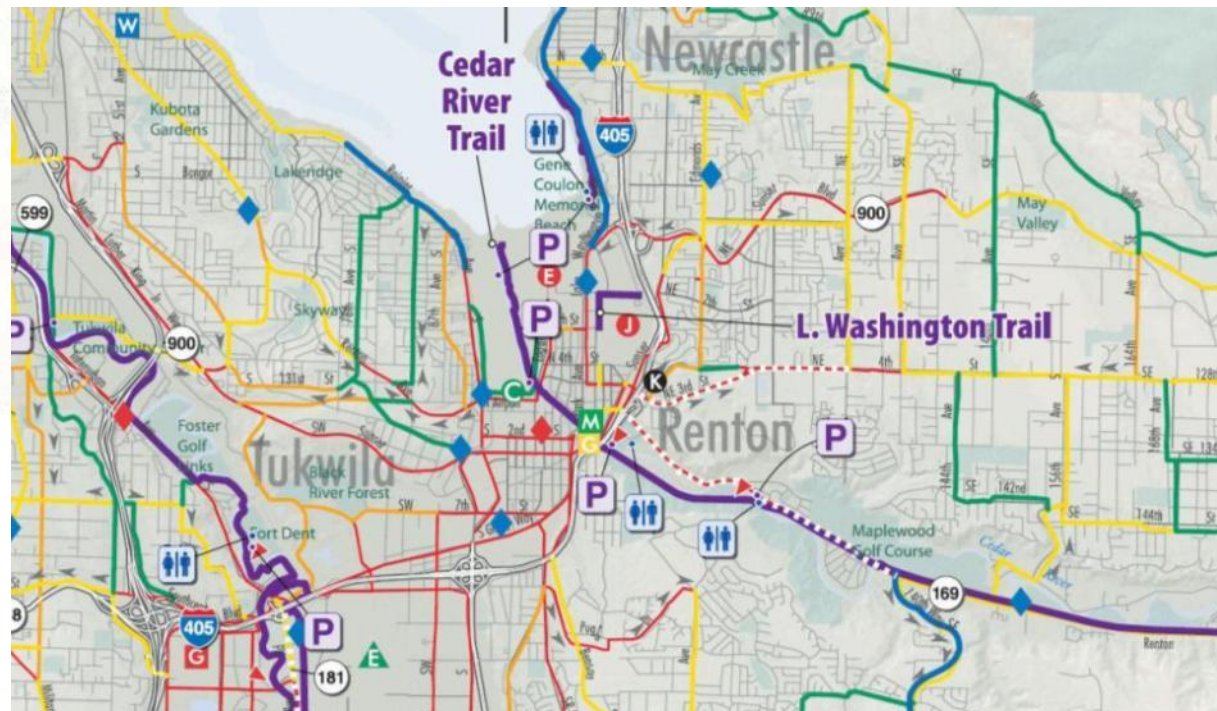
There are over 1100 parcels in agricultural use in this map, with approximately 7400 acres in use

Forage, particularly horse pastures and hay, is a common agricultural use



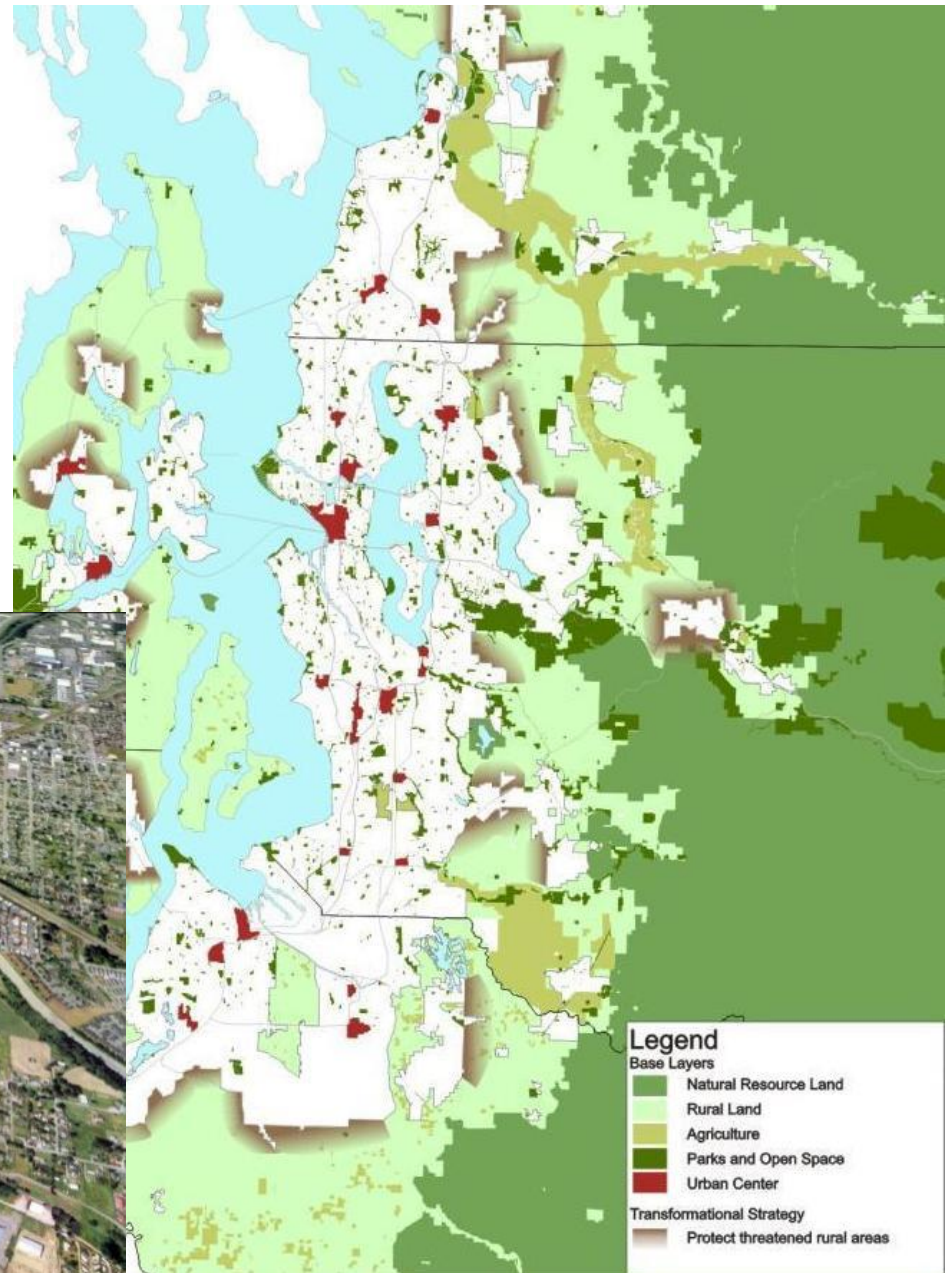


Trails and linear systems:  
Regionally critical missing links





# Need to structure the “urban fringe”

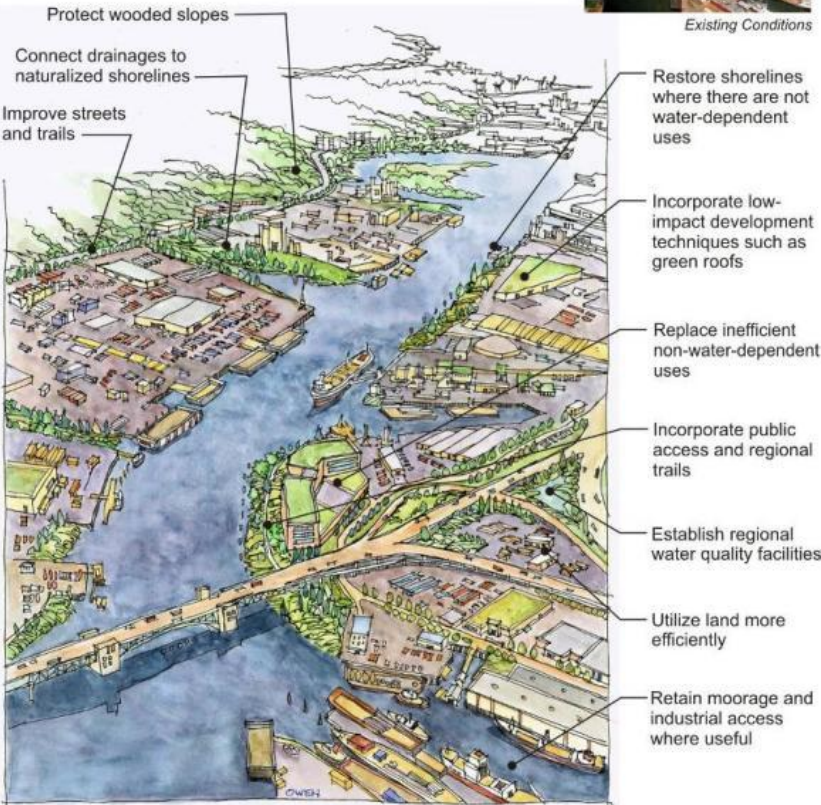




# Assistance to local groups

## Transforming Industrialized Estuaries

- 1. Determine need for industrial space, then
- 2. Upgrade existing industrial facilities, and
- 3. Add compatible redevelopment, and
- 4. Improve infrastructure - all with environmental restoration and sustainable development techniques.



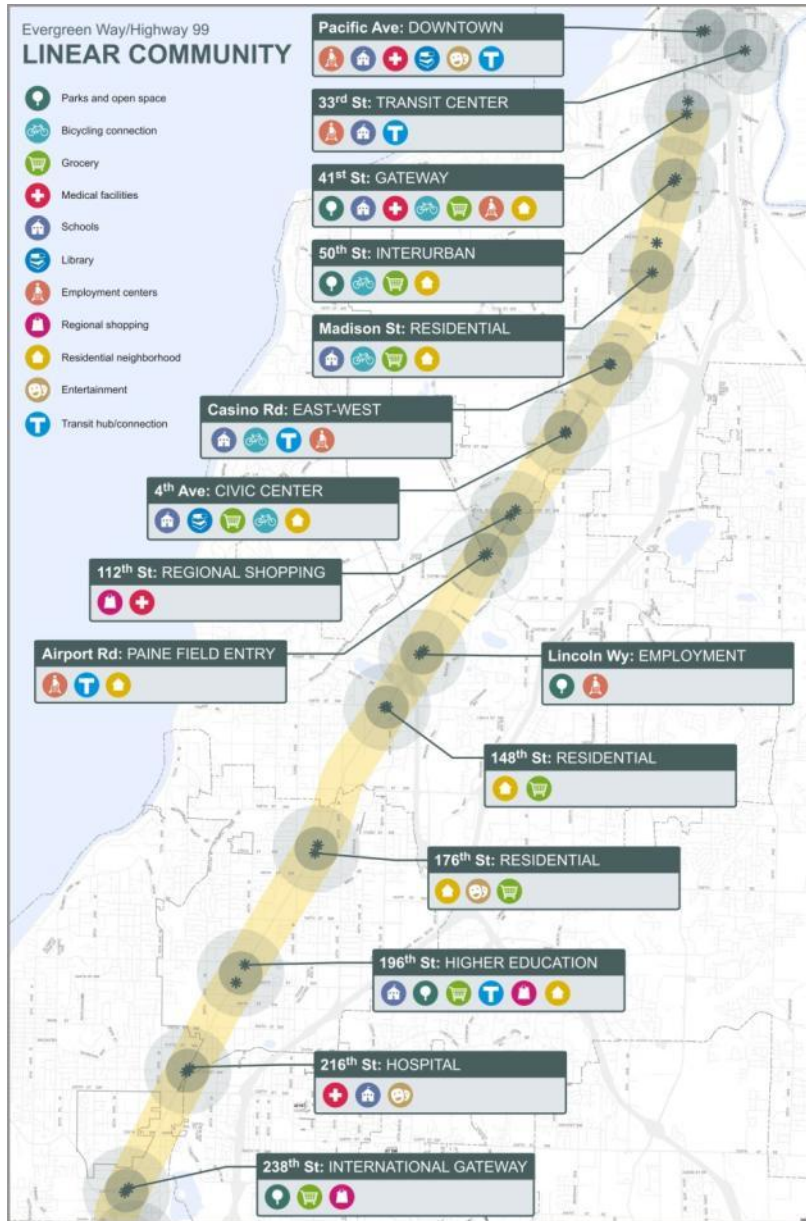
Existing Conditions

## Duwamish Valley Vision Map





# Funds for parks where we need them





So we need to:

- **Support and coordinate existing activities**
- **Establish significant regional activities and priorities**
- **Incorporate health and ecosystem services objectives**
- **Focus on implementation**
- **Build a constituency around a common vision**

In short, we need a strategy to most effectively conserve and enhance our open space systems

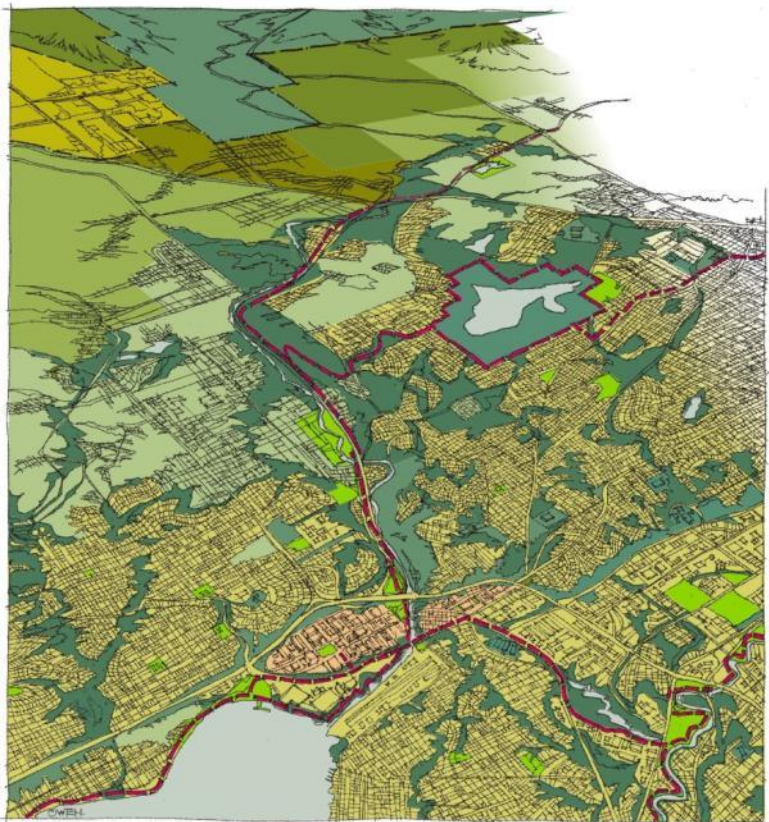


## And PSRC VISION 2040 mandates that effort

- *PSRC policy En-8: Identify, preserve, and enhance significant regional open spaces and linkages across jurisdictional boundaries*
- *En-Action-2: The Puget Sound Regional Council, its member jurisdictions, open space agencies, and interest groups shall develop a regional open space strategy*

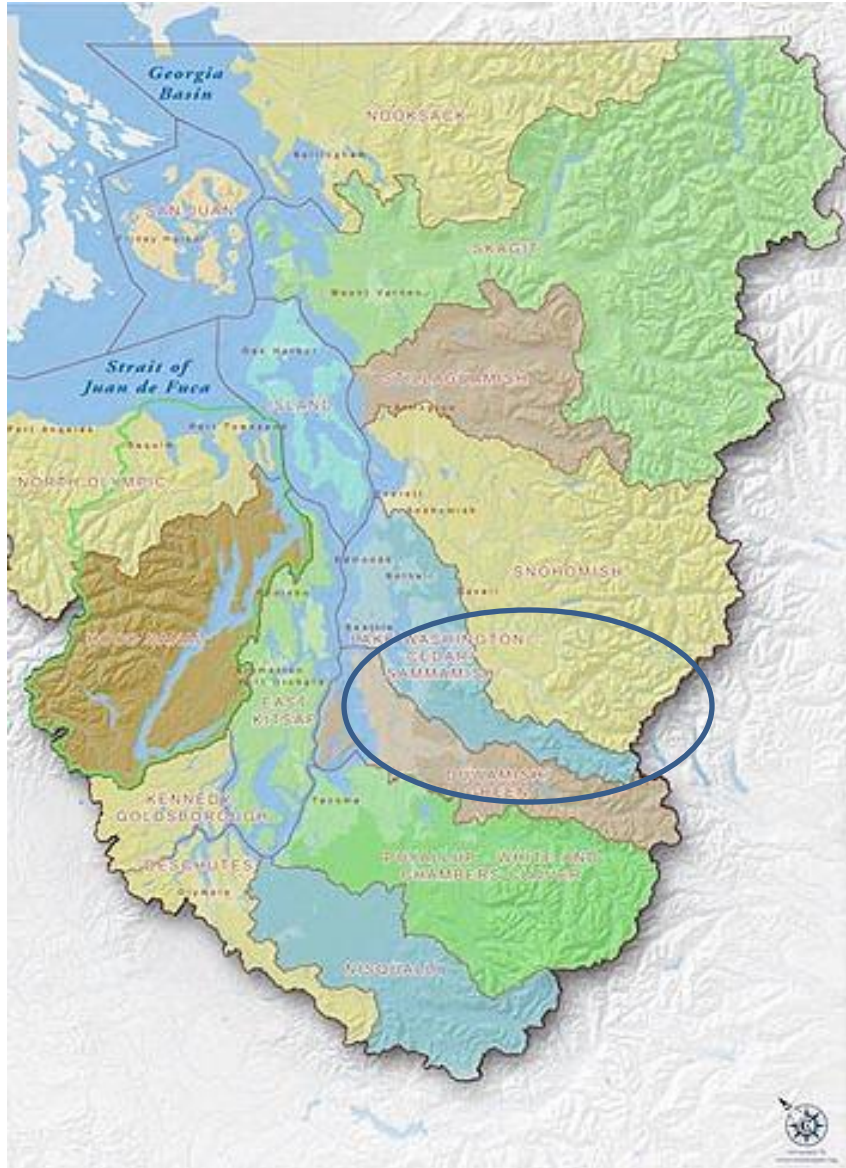


# Scoping: Pilot project in the Cedar River Watershed



- |  |  |   |
|--|--|---|
| Protect farmlands through zoning, TDR's and economic programs  | Establish strong conservation standards for rural development  | Combine aquatic systems enhancement strategy with open space planning |
| Plan new communities with ample open space and restoration     | Purchase and manage parks for multiple purposes                | Connect regional trails throughout region and to local neighborhoods  |
| Protect and connect critical areas, greenbelts & shorelines    | Require vegetation conservation of new development             |   |
| Manage public lands for long term environmental sustainability | Implement an ambitious urban forestry program in built areas   |   |
| Encourage sustainable forestry on private lands                | Incorporate open space and LID techniques in new urban centers |   |

A conceptual example of an inter-jurisdictional open space strategy combining multiple actions to achieve multiple objectives



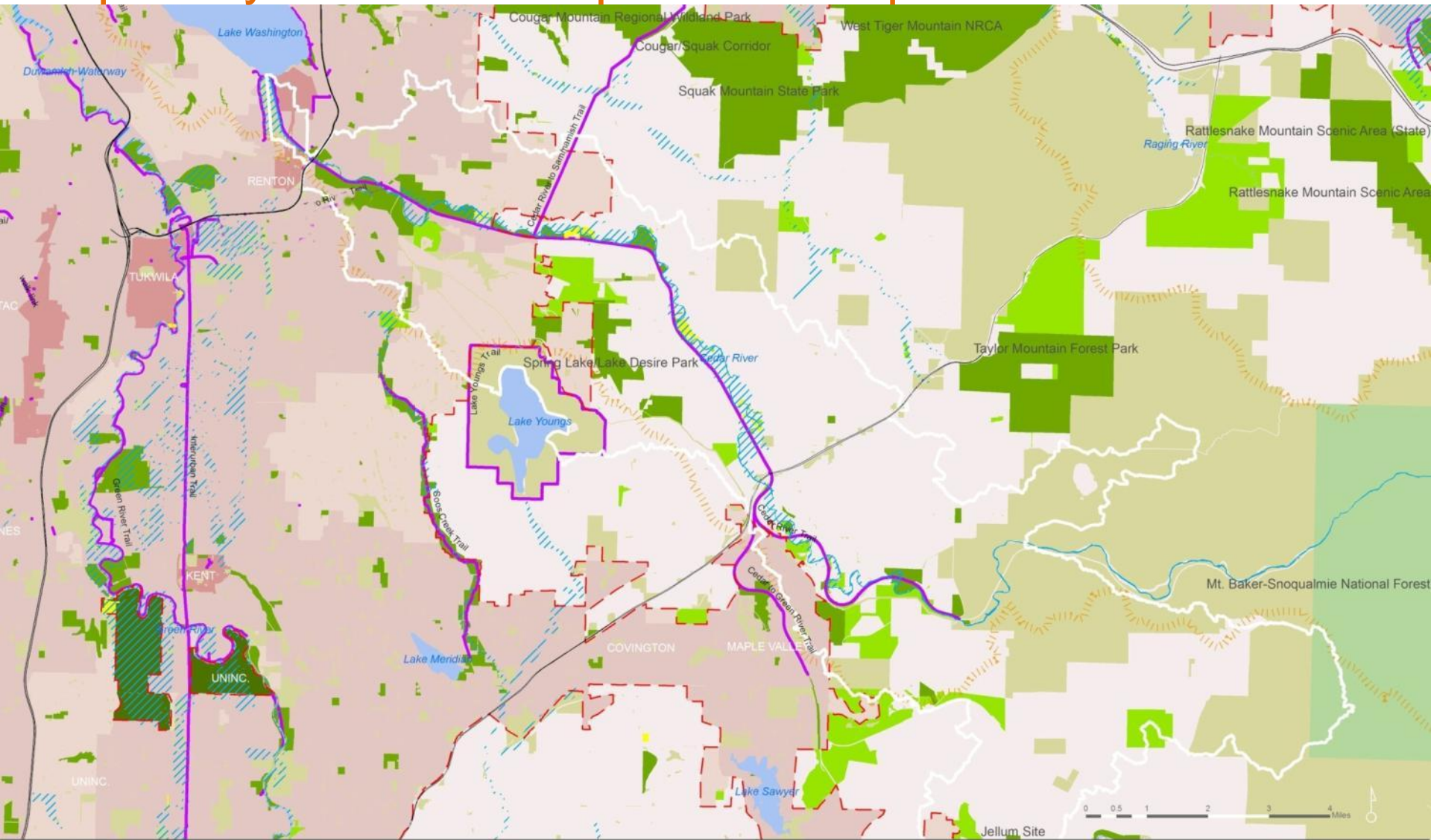


# A sketch for an Open Space Strategy for Cedar River Watershed





# Step 1: Synthesis: Compile current plans and activities



## LOWER CEDAR RIVER BASIN

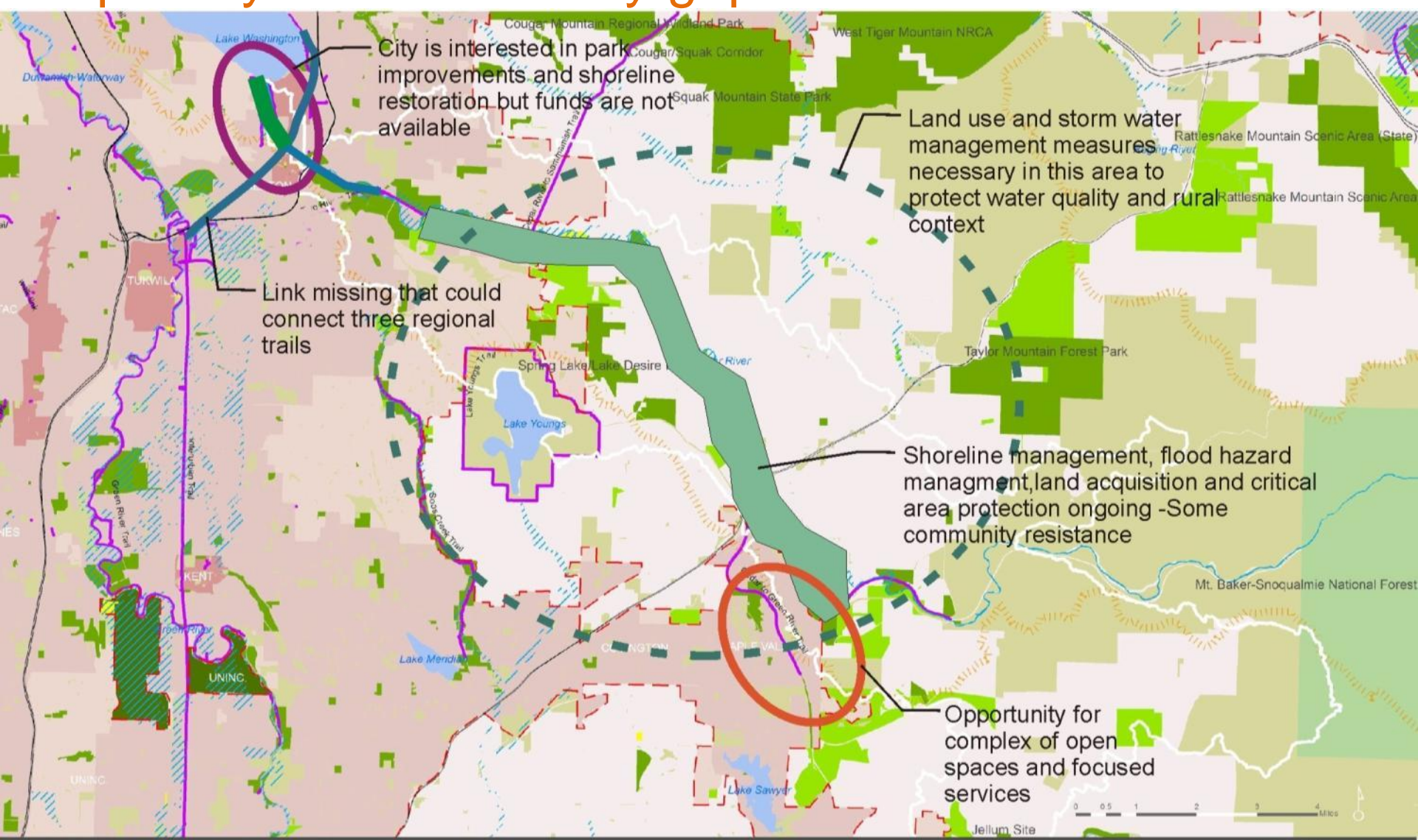
Regional Open Space Strategy ROSS



prepared by: Heidi S. Martin  
date: August 25, 2010  
data source: KO, WAGDA, FSPDC  
projection: Lambert Conformal Conic



# Step 2: Synthesis: Identify gaps and intersections



## LOWER CEDAR RIVER BASIN

Regional Open Space Strategy ROSS





# Puget Sound Characterization Project

## WRIA 7 & 8 Results

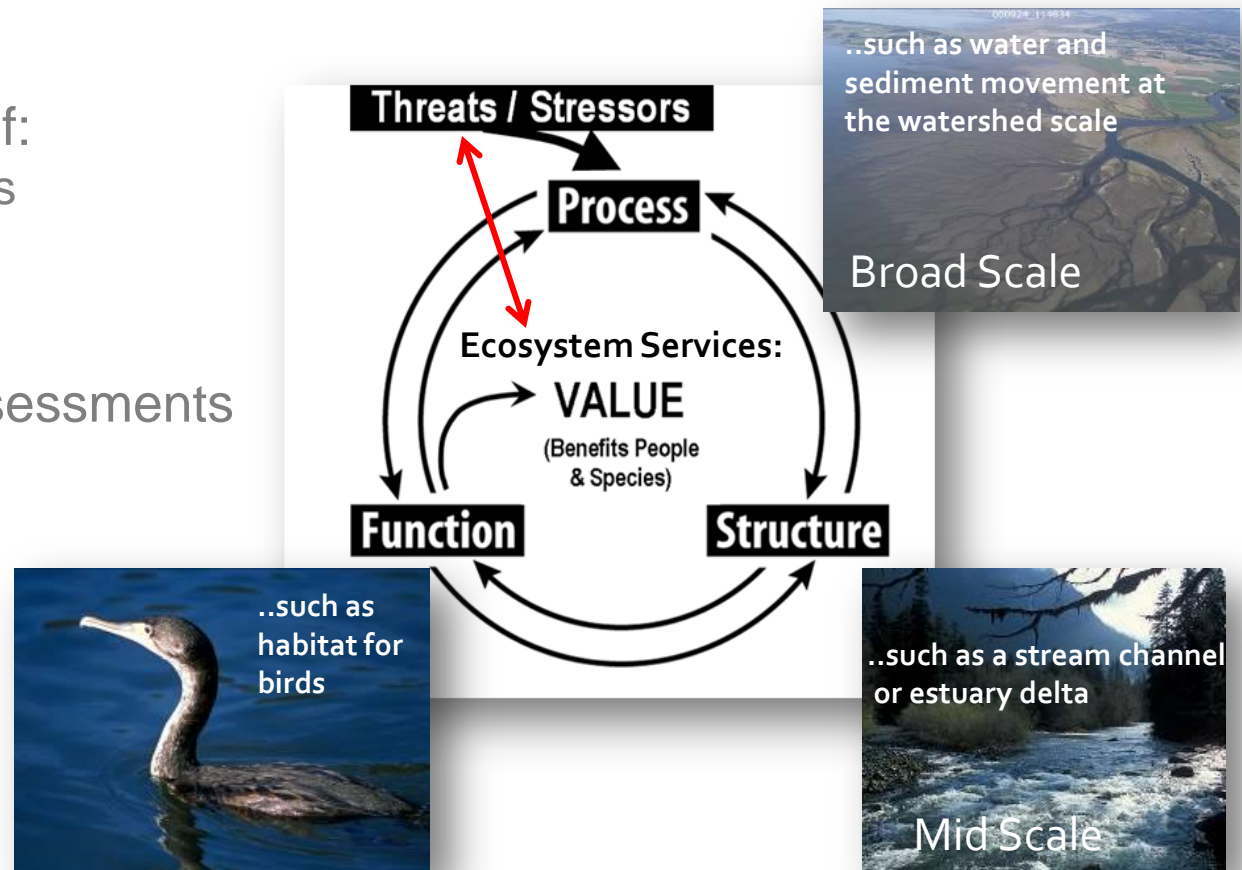
Presentation by Stephen Stanley to King County

### Purpose of Project

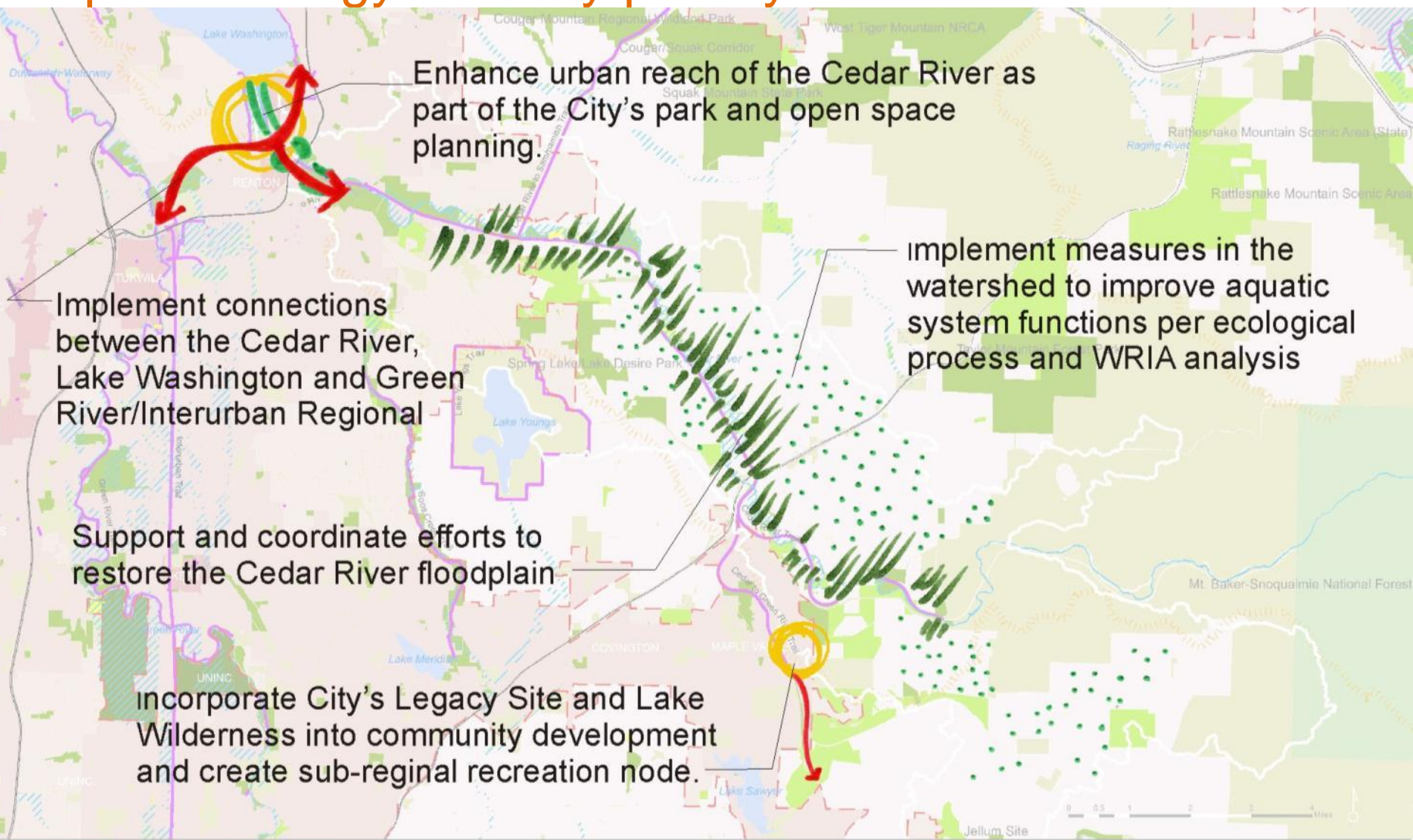
Sound-wide assessment of:

- Freshwater processes
- Nearshore processes
- Wildlife habitat

These are broad scale assessments



# Step 3: Strategy: Identify priority efforts



Enhance urban reach of the Cedar River as part of the City's park and open space planning.

Implement connections between the Cedar River, Lake Washington and Green River/Interurban Regional

implement measures in the watershed to improve aquatic system functions per ecological process and WRIA analysis

Support and coordinate efforts to restore the Cedar River floodplain

incorporate City's Legacy Site and Lake Wilderness into community development and create sub-regional recreation node.

## LOWER CEDAR RIVER BASIN

Regional Open Space Strategy ROSS

lower cedar watershed	water bodies	agriculture	park property	UGA
WRIA 8	potential property	national forest	public lands	urban centers
floodplain	regional trails	parks + open space		city



# Priorities and implementation strategies

ACTION	PARTICIPANTS													STRATEGY	
	Regional Advocacy	Local Govt.		Agencies				NGOs			Local Public				
		City	County	Dept. of Ecology	WRIA	PSRC	Puget Sound Partnership	Cascade Land Conservancy	The Nature Conservancy	Washington Bicycle Alliance	Environmental	Trail Advocates	Recreational		Local Landowners
Continue acquisition and restoration efforts in Cedar River Floodplain			●	●	●			●	●		●			●	Support King County with coordinated activities.
Connect Green River, Lake Washington and Cedar River Trails	●	●	●			●				●		●	●		Raise priority for transportation funds.
Open and enhance Cedar River west of I 405	●	●		●		●	●				●	●	●	●	City lead with combined funding based on watershed benefit.
Restore mouth of Cedar River		●		●	●		●		●		●	●	●		Water quality and ecological benefit.
Provide for parks in UGA and annexation areas		●	●					●			●	●	●	●	First study the problem. Identify solutions.
Establish regional monitoring and management handbook				●	●	●	●		●		●				Environmental scientific community lead. Share results.
Publish Species needs posters				●					●		●				Educational effort. Good neighborhood project.
Advocate for greater share of transportation funds	●	●	●			●		●				●			Build a coalition.
Form advocacy group for better use of development capacity increases	●	●	●			●		●			●	●	●		Build a coalition for regional unity.

# It ain't a new idea

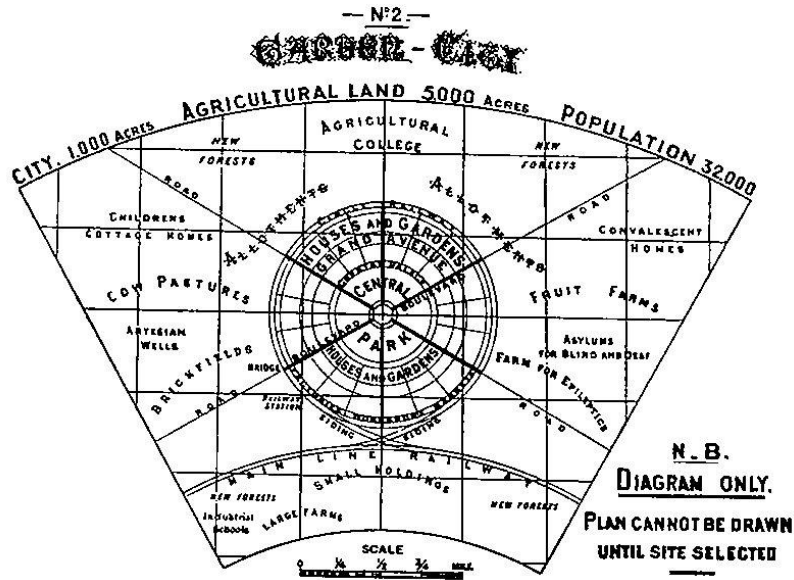
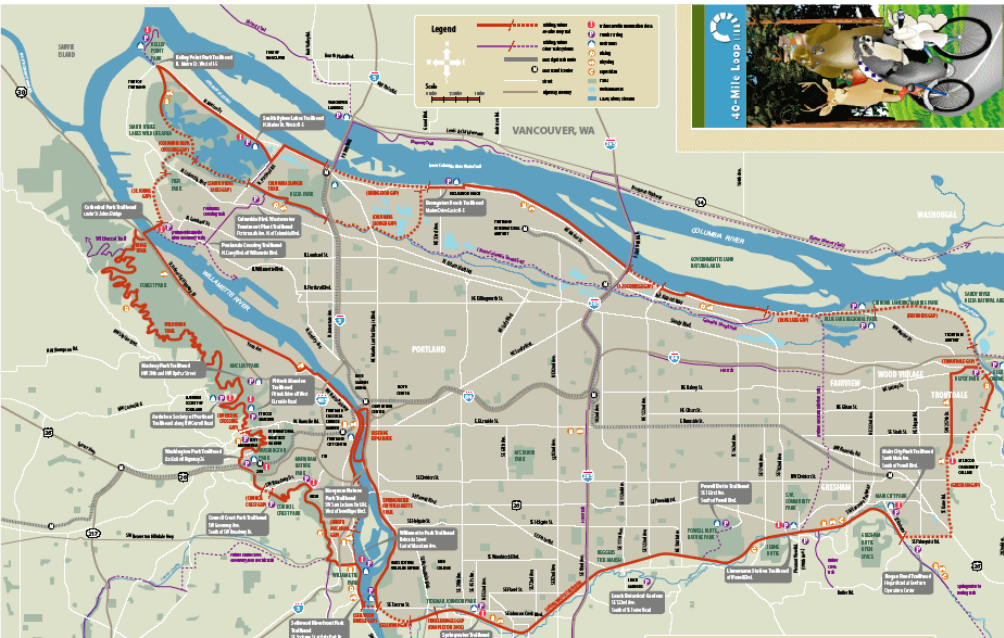
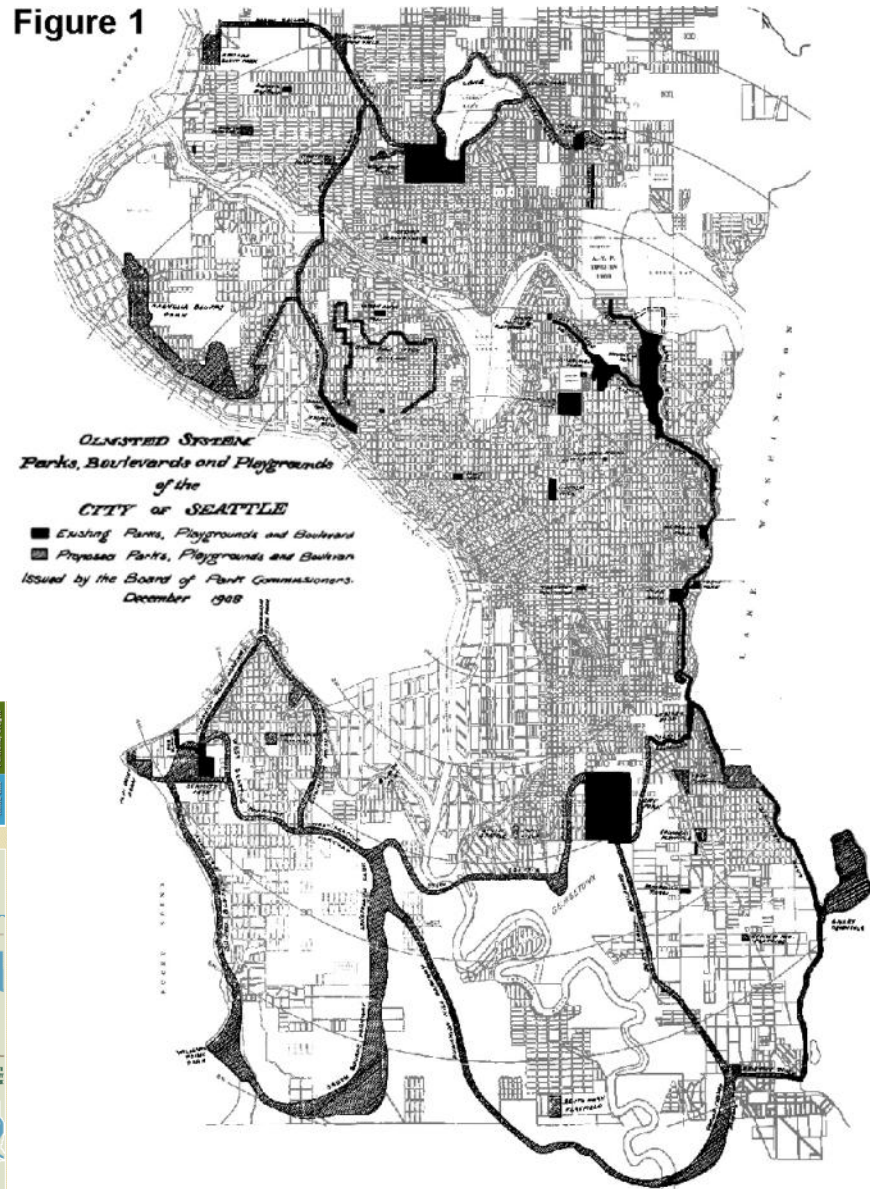


Figure 1





# Who else has done it?

- **Portland, OR** Parks 2020 Vision
  - Emphasizes developing a sense of community
  - Successfully integrated many smaller holdings into a coherent park system
  - Includes a strong evaluation program for grading performance
- **Auckland, NZ** Regional Open Space Strategy
  - Broad vertical and horizontal aspect: National to local analysis + participation
  - Clearly communicated series of action plans and planning tools
- **St Louis, MI** Great Rivers Greenway District
  - Strong coordination between multiple county and city governments
  - High level of community input and support + popular central project: River Ring
  - Flexible, strong image (formerly Metropolitan Park and Recreation District)
- **Nashua, NH** Regional Open Space Strategy
  - Broad definition of open space; including forests, agricultural, recreational
  - Includes many smaller jurisdictions in a regional planning effort
  - Calls for the development of a set of open space planning tools







It's not just about open space

We need to build a sense of regional community







NWCLC

**GREEN FUTURES** RESEARCH & DESIGN **LAB**  
University of Washington  
242 Gould Hall Box 355734 | Seattle, WA 98195 | [www.greenfutures.washington.edu](http://www.greenfutures.washington.edu)