

Coordinated Investment

What does it take to reverse the trajectory of ecosystem degradation within a human ecological community?

Goals

- ▶ *Incubate creative solutions*
- ▶ *Solve problems by combining resources*
- ▶ *Remove barriers to action*
- ▶ *Bring new resources to ecosystem recovery*

Principles

Local Teams

The ability to envision and implement ecosystem recovery emerges from teams of people who know the social and ecological details of a place.

Right Scale

Too large of a place, and the issues and stakeholders get tangled. Too small and we are not working at an ecosystem scale. Each place requires an integrated vision.

Integrated Vision

Ecosystem recovery requires protection *and* restoration, and projects with multiple benefits. An integrated vision can frame community and agency commitment.

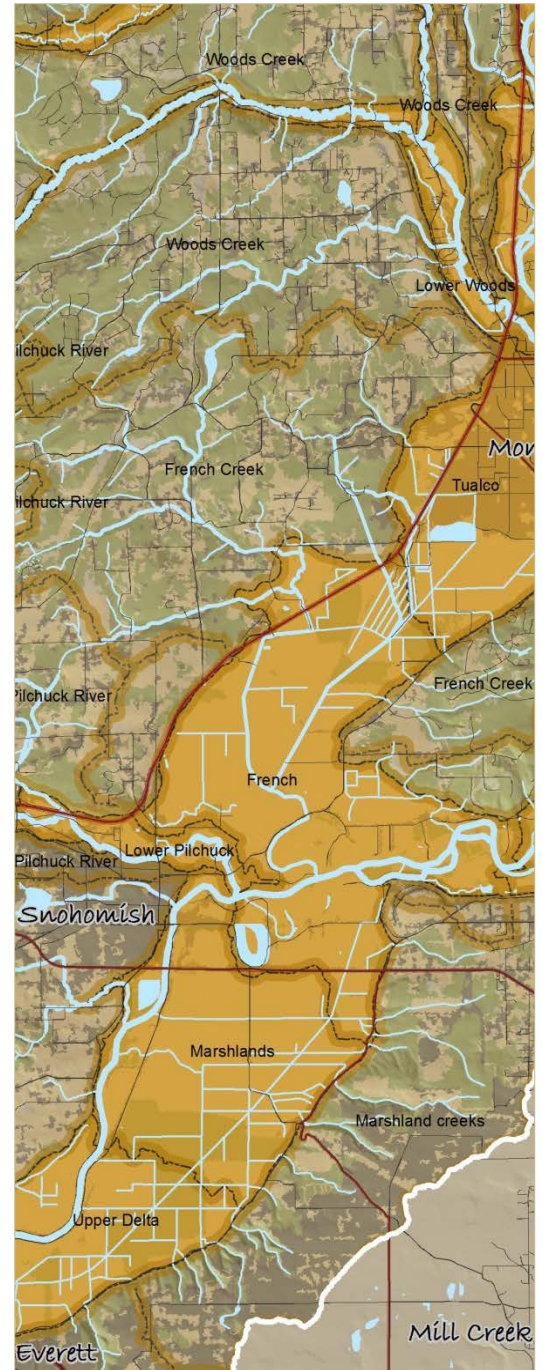
Agency Commitment

Ecosystem recovery is breaking trail and requires sustained effort. Leadership must invest in teams that can earn the trust and collaboration of their communities.

Next Step: The Snohomish Analysis

We will assess the potential for coordinated investment in the Snohomish River Watershed following the Resilient Lands and Waters designation. This work will include an inventory of government assets, identification of potentially willing communities, and the identification of ideas for reorganizing existing agency assets to support ongoing local work.

Washington Departments of Ecology, Fish and Wildlife, and Natural Resources, Puget Sound Partnership, Washington Conservation Commission, National Oceanic and Atmospheric Administration, US Fish and Wildlife Service, US Army Corps of Engineers, Federal Emergency Management Administration, US Navy, Environmental Protection Agency, The Nature Conservancy



Notes and contacts for coordinated investment efforts can be found at
https://salishsearestoration.org/wiki/Coordinated_Investment